

# RAGTIME

★ THE MUSICAL ★



THEATRE MEMPHIS presents "RAGTIME" • Music by STEPHEN FLAHERTY  
Lyrics by LYNN AHRENS • Book by TERENCE McNALLY  
Directors/Choreographers JORDAN NICHOLS and TRAVIS BRADLEY  
Music Director JEFF BREWER

Sponsored by DR. THOMAS RATLIFF and JUVE SALON SPA  
Media Sponsors WKNO 91.1FM, MEMPHIS FLYER and THE BEST TIMES

**JUNE 3-26**

WKNO • FM

Generous support provided by

Memphis Flyer



ArtsMemphis®



THE JENIAM  
FOUNDATION

THE BEST  
TIMES

Juve  
SALON SPA

THEATRE MEMPHIS® 100 in the LOHREY THEATRE

A CENTURY OF *Always* ENTERTAINING



© 2022

TICKETS 901.682.8323 ONLINE [theatrememphis.org](http://theatrememphis.org)



## THEY AREN'T LITTLE FOR A LIFETIME.

But while they are, our early education programs at Westminster prepare them for the future.

Little ones are growing intellectually, physically, emotionally, and spiritually; so the care your children receive when they are young is vital to their later success. At Westminster, our small class sizes, gifted teachers, and emphasis on exploration uniquely address all of the areas required for your young learner to grow into a learner for a lifetime.

### THE EDUCATION FOR A LIFETIME

JK-12 | CLASSICAL | CHRISTIAN | INDEPENDENT  
901.380.9192 | WAMEMPHIS.COM



**Vol. CIX, No. 7**

**2021-2022**

**June 3 - 26, 2022**

**AFFILIATIONS**

American Association of Community Theatres  
ArtsMemphis  
Southeastern Theatre Conference  
Tennessee Arts Commission  
Tennessee Theatre Association

**THEATRE MEMPHIS STAFF**

Debbie Litch, *Executive Producer*

**Administrative Staff**

Lisa Hall-Hayes, *Operations Manager*  
Randall Hartzog, *Director of Marketing/Communications*  
Kaitlin Brucker, *Office Manager/Usher Coordinator*  
Lisa Chang, *Finance Manager*  
Emma Clark, *Box Office Assistant*  
Emily Greene, *Box Office Assistant*  
Christina Hendricks, *Box Office Assistant*  
Ashley Whitten Kopera, *Box Office Assistant*  
Catherine Lucchesi, *Box Office Assistant*  
Sharri Reid, *Box Office Assistant*  
Claudia Bacigalupo, *House Manager*  
Sue Binnie, *House Manager*  
Tiffany Crawford, *House Manager*  
Daniel Myers, *House Manager/Security*  
Johnny Gaither, *Building & Grounds*

**Production Staff**

Michael Compton, *Production Manager/Technical Director*  
Gary Beard, *Music Consultant*  
Amie Eoff, *Resident Costume Designer*  
Ashley Selberg, *Costume Shop Manager*  
André Bruce Ward, *Resident Costume Designer Emeritus*  
Jack Netzel-Yates, *Resident Scenic Designer/Properties Master*  
Mandy Kay Heath, *Resident Lighting Designer*  
Ashley J. Nickas, *Director of Stage Management/*  
*Volunteers*

**Department of Outreach and Engagement**

Becky Caspersen, *Outreach/Engagement Director*

**Box Office: 901.682.8323**

**Advertising: 901.682.0264**

**[www.theatrememphis.org](http://www.theatrememphis.org)**

**ArtsMemphis®**



**THEATRE MEMPHIS@100**  
A CENTURY OF *Always* ENTERTAINING

**2021-2022**  
**SEASON**  
**Welcome Home**

**Ordinary Days**  
A Contemporary Musical  
Sept. 22-25

**R & J & Z**  
A Zombie Comedy  
Oct. 28-Nov. 6

**From Me to You**  
A Dance Concert  
Nov. 19-20

**The Wolves**  
A Dramedy  
Feb. 2-5

**A Bright Room Called Day**  
A Historical Drama  
Feb. 24-March 5

**Emerge**  
New Student Dance Works  
March 25-26

**Pippin**  
A Concept Musical  
April 14-22

*For event information go to*  
**[memphis.edu/theatre](http://memphis.edu/theatre)**

# THE BEST TIMES

The Monthly News Magazine for Active Mature Mid-Southerners

Reaching 60,000 monthly readers with over 350 pick up points in the Memphis market, **The Best Times** has been the voice and advocate for older adults in the Mid-South since 1989. We provide valuable and interesting information to our readers and get results for our advertisers.



901-458-2911 • [www.thebesttimes.com](http://www.thebesttimes.com)

A proud media sponsor of Theatre Memphis

## temperature, inc.

congratulates

### THEATRE MEMPHIS

on 100 years of entertaining the community!

*Proudly Serving the Mid-South since 1969!*

A/C and Heating Installation & Service  
Computer Room A/C Installation & Service  
Controls  
Energy Management  
Building Management  
Utility Savings  
Building Access Systems  
Rental Chillers and Cooling Units  
Chiller Conversions

Chiller Replacements  
Hepa and Pleated Filters  
Refrigeration  
Piping and Process Piping  
Gas Piping  
Used Equipment  
Facilities Management  
Ventilation  
HVAC Maintenance Contracts

7500 Appling Ctr. Dr. • Memphis, TN 38133 • 901.388.4706 • fax 901.388.9797

[www.acca.org](http://www.acca.org)



Proud Member of  
Air Conditioning Contractors of America

# Next at Theatre Memphis

## In the Lohrey Theatre:

### ***Guys and Dolls***

Music and Lyrics by Frank Loesser  
Book by Jo Swerling and Abe Burrows  
Directed by Cecelia Wingate  
Music Direction by Jeffery Brewer  
Choreographed by Christi Hall  
August 19 – September 11, 2022

**Fun and Sassy.** This Manhattan-based musical romantic comedy tells the overlapping stories of high-roller Sky Masterson and rascal gambler, Nathan Detroit. As they look to set up the largest craps game in town they are derailed, respectively, by two women: a straight-laced missionary and a headliner at the Hot Box Club. All the shenanigans of these seemingly incompatible couples takes us from the heart of Times Square to the cafes of Havana, Cuba, and eventually everyone ends up right where they belong.

Adult: \$35                      Member/Senior/Military: \$30                      \*Student: \$15

## In the Next Stage:

### ***Much Ado About Nothing***

Written by William Shakespeare  
Directed by Irene Crist  
September 16 – October 2, 2022

**Witty and Wild.** One of Shakespeare's most frequently performed comedies, this plot includes two quite different stories of romantic love. Hero and Claudio fall in love almost at first sight, but an outsider, Don John, strikes out at their happiness. Beatrice (Hero's cousin) and Benedick are kept apart by pride and mutual antagonism until others decide to play Cupid. Witty banter, false accusations, deception, broken promises, chance discovery and romance all factor into the non-stop action.

Adult: \$25                      Member/Senior/Military: \$20                      \*Student: \$15

\*Student tickets are available to those 18 and under as well as college students with a valid ID.

*Single tickets go on sale and members may reserve seats as of July 5, 2022.*

**Call the Box Office at 901.682.8323 for reservations  
or order tickets online at [www.theatrememphis.org](http://www.theatrememphis.org)**

# NYC. Hassle-free.



*One contact. One price. One good time.* See New York City with the freedom of knowing your hotel, travel and transportation to and from the airport are all taken care of (tips included). ***And best of all, you choose the dates you want to go.***

Coordinated by former speech and drama teacher at Harding Academy, Dr. Bill Srygley personalizes your travel arrangements so you can concentrate on what to do in NYC and not how to get there or where to stay.

**\$1600 per person**, based on two person per room capacity  
(as low as \$1300 per person based on four person per room capacity)

- Includes four nights at a Times Square Hotel
- Round trip airfare
- Transportation to and from the airport (tips included)

**Take advantage of our special offering!**



## *The Music Man*

with Hugh Jackman and Sutton Foster  
as part of this package deal.

Limited dates and availability.

Contact Dr Bill Srygley at [williamleake40@outlook.com](mailto:williamleake40@outlook.com)

## *From the Executive Producer...*



### **Theatre Memphis has been touched by an Angel! 100 Years and Beyond – Theatre Memphis Will SHINE ON**

Theatre Memphis is 101. Four years ago I wrote the following first sentence to the program article for *42<sup>nd</sup> Street*. “***Guess what Theatre Memphis is dreaming about?*** In 1975, Theatre Memphis opened its new state-of-the-art building at 630 Perkins Ext. with two theatres, a 411 seat main stage and a 100-seat black box theatre for smaller productions after 46 years at the Pink Palace.” Here we are 47 years later and are completing our phenomenal 100<sup>th</sup> celebratory season.

**And, GUESS WHAT – OUR DREAM for a reimagined, expanded and renovated theatre is a reality and IS NOT JUST A DREAM!** With your generosity and help, we completed construction during the pandemic and paid off the construction loan. There are so many people to thank who have made this dream come true. I thank YOU from the bottom of my heart. I hope you are as thrilled with the results of our facility improvements and additions as I am. It has been such an exciting pleasure to see our treasured audiences come back this season and express the one word that is repeated over and over -- WOW!!

However, without one amazing patron and friend, this dream could not have been realized. That gentleman is **Gene Cochran**. Gene is truly our Theatre Memphis Angel! Without his generosity and lead gift to our SHINE ON campaign, we would not have more restrooms nor would we have a fabulous new bar/concessions and Will Call spaces.

Gene is not an actor and he has never wanted to be on our stages. He truly just loves theatre and especially Theatre Memphis. Gene became involved with Theatre Memphis back in the early 80's when his son was attending White Station High School. He would accompany the class to Theatre Memphis to see A CHRISTMAS CAROL and met then Executive Director Sherwood Lohrey. With Gene's great success and knowledge of business, Sherwood asked Gene to come on the board and a few years later Gene would be Board President. After Gene served as Board President, he stayed on the Executive Committee as Business Advisor and fortunately for Theatre Memphis, Gene has stayed ever since. There was not a week that did not go by that Gene did not come to TM so he could be near the staff and as he called it – “his theatre”. Gene never missed a performance and has been TM's biggest fan for over 40 years. Gene Cochran has continued to invest his time, talents, treasures and love for the welfare of our beloved theatre. It is absolutely fitting that our beautiful, spacious lobby has been named the Gene and Sandra Cochran Lobby or **Cochran Lobby**.

We still want to complete our endowment goal which will allow Theatre Memphis to enhance performance and education programs, support artists and continue to achieve “consistent artistic excellence” in all our endeavors. We hope you will consider a gift to help us realize that vital goal.

So, what started as a dream over a five years ago has become a reality and has come true! This is possibly Theatre Memphis' most magical moment as we look forward to and embrace our 101st year as we continue to provide important cultural entertainment, enrichment and enlightenment for and by our Memphis community. This dream is for YOU, our treasured audiences and friends. We want your Theatre Memphis experience to be the very best as we work toward consistent artistic excellence with each production, each program, each event, each endeavor we create. I have said many times that we do not take anything for granted and appreciate everyone who invests their invaluable time, talents, hard work, resources and financial support to help us be a greatly valued and exciting cultural asset for our Memphis community. That dedication and devotion by our community has been the key to our 100 plus years of longevity and accomplishments.

Thank you for your continued vote of confidence and your outstanding support! This is our time!!  
**SHINE ON, Theatre Memphis!!**

*Debbie*

# THEATRE MEMPHIS

with  
**Dr. Thomas Ratliff**  
and **Juve Salon Spa**  
Present

# RAGTIME

## ★ THE MUSICAL ★

Book by **Terrence McNally**

Music by **Stephen Flaherty**

Lyrics by **Lynn Ahrens**

Based on the novel "Ragtime" by **E.L. Doctorow**

Directed and Choreographed by **Travis Bradley** and **Jordan Nichols**

Music Direction by **Jeffery Brewer**

*Lighting Design*

**Mandy Kay Heath**

*Costume, Wig, Hair &*

*Make Up Design*

**Amie Eoff**

*Scenic &*

*Properties Design*

**Jack Netzel-Yates**

*Sound Design*

**Nathan Greene**

*Stage Manager*

**Maggie Jackson**

*Assistant Director*

**Claire D. Kolheim**

*Production Manager/Technical Director*

**Michael Compton**

*Director of Stage Management & Volunteers*

**Ashley J. Nickas**

Season Presenting Sponsor: **First Horizon Foundation**

Show Sponsors: **Dr. Thomas Ratliff** and **Juve Salon Spa**

Media Sponsors: **WKNO 91.1 FM, The Best Times, Memphis Flyer**

**Ragtime** is presented through special arrangement with Music Theatre International (MTI).

All authorized performance materials are also supplied by MTI. [www.MTIShows.com](http://www.MTIShows.com)

The taking of photographs and the videotaping or other video or audio recording of this production is strictly prohibited. Your cooperation is appreciated. Wheelchair accessible restrooms are located off the north and south lobbies. Hearing reinforced headsets are available at the Box Office. Please ask the House Manager or an Usher for assistance.

**Poster/Cover Design by Missy McClendon**

**Promotional Photos by Steve Roberts**

**Production Photos by Carla McDonald**



## Cast of Characters

<i>Little Boy</i> .....	Jim Patterson
<i>Father</i> .....	Kevar Maffitt
<i>Mother</i> .....	Lauren Duckworth
<i>Younger Brother</i> .....	JD Willis
<i>Coalhouse</i> .....	Justin Allen Tate
<i>Sarah</i> .....	Dawn Bradley
<i>Booker T. Washington</i> .....	Claiborne Thomas Jr.
<i>Tateh</i> .....	John Maness
<i>Tateh's Little Girl</i> .....	Lilah Benjamin
<i>Harry Houdini</i> .....	John Brenton Strauss
<i>Henry Ford</i> .....	Atam Woodruff
<i>J.P. Morgan</i> .....	Bill Andrews
<i>Emma Goldman</i> .....	Tracy Thomas
<i>Evelyn Nesbit</i> .....	Cassie Thompson
<i>Sarah's Friends</i> .....	Gabrielle Willingham, Johnathon Lee
<i>Grandfather</i> .....	Parker Dinwiddie

### Ensemble

Vera Brown, Zan Edwards, Lindsay Ferreira, Thedrick Griffin, Jeanna Juleson, Jacob Mohler, Brandon Sewell Jr., Sadie Shannon, Caroline Simpson, Cary Vaughn

### Orchestra

Renee Murray, *Keyboard*  
Jennifer Rushton, *Keyboard*  
Jeanne Simmons, *Woodwinds*  
Nathan Nix, *Woodwinds*  
Chelsea Negray, *Woodwinds*  
Kenna Chelsoi, *Violin*  
Estefan Perez, *Cello*  
Ed Richter, *Guitar/Banjo*  
Ben Lewis, *Trumpet*  
Ken Spain, *Trombone*  
Pete Vescovo, *Bass*  
Ed Murray, *Percussion*  
Larry Gooch, *Drums*  
Carla McDonald & Mary Karen Dixon, *Pit Singers*  
Jeffery Brewer, *Music Director/Conductor*

*A very special thank you to Explore Bike Share and Ed Murray.*

*Special thanks to Ben Lewis for his most generous contribution of orchestra chairs in loving memory of Joanne Loewenberg Markell and Herman P. Markell.*



Bill Andrews



Lilah Benjamin



Dawn Bradley



Parker Dinwiddie



Lauren Duckworth



Johnathon Lee



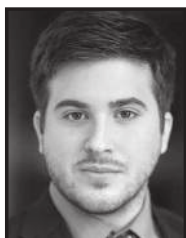
Kevan Maffitt



John Maness



Jim Patterson



John Brenton Strauss



Justin Allen Tate



Claiborne Thomas Jr.



Tracy Thomas



Cassie Thompson



Gabrielle Willingham



JD Willis



Adam Woodruff



Travis Bradley  
Director/Choreographer



Jordan Nichols  
Director/Choreographer



Jeffery Brewer  
Music Director

---

# Who's Who

---

**Bill Andrews** (J.P. Morgan) has been working in and around theater his entire adult life. Performance remains a passion, and Bill is particularly proud of appearing at TM in: 1776, HAMLET, CYRANO, HEDDA GABBLER, TO KILL A MOCKINGBIRD, and A CHRISTMAS CAROL. Also around Memphis: THE ROCKY HORROR SHOW, SPAMALOT!, SUNSET BOULEVARD, FROST/NIXON, URINETOWN THE MUSICAL, SAUCY JACK AND THE SPACE VIXENS, PETER AND THE STARCATCHER, THE BOOK OF WILL, and of course PETER PAN, all at Playhouse on the Square or Circuit Playhouse. His training in acting, set design and construction provided the foundation for a career designing and building sets and environments for museums, corporate and entertainment events, television and the stage; formerly with Memphis Scenic, and currently with Good Show LLC. Clients include FedEx, Baptist Memorial Healthcare Foundation, BRIDGES, Memphis Tourism, and The Children's Museum of Memphis. 2022 will mark Bill's 27th year as Designer and Director for the National Civil Rights Museum Freedom Award, an annual benefit that has brought to Memphis honorees and performers including Nelson Mandela, the Dalai Lama, Oprah Winfrey, Bill Clinton, Bono, Stevie Wonder, Faith Hill, and John Legend. "It has been an honor to meet and serve so many wonderful people, and such a valuable organization. Thanks to Susan, and to family and friends near and far, for the love and support that make all this possible."

**Lilah Benjamin** (Tateh's Little Girl) is ten years old and a rising 6th grader at Lausanne Collegiate School. She has performed in ten shows in the Nashville area and is excited for her first show in Memphis. Lilah enjoys singing, playing piano, tap dancing, art, and ballet at Ballet Memphis. She is so very honored to be playing Tateh's Little Girl this summer and hopes you enjoy the show!

**Dawn Bradley** (Sarah) is thrilled to be a member of the incredibly talented RAGTIME cast. She considers the story profoundly moving, and hopes to adequately represent the unique perspective of her character, Sarah. In 2020, Dawn was awarded the Ostrander for Best Actress in a Musical for her portrayal of Felicia in MEMPHIS THE MUSICAL at Playhouse on the Square. Some of her other theater credits include AIDA and RAISIN at Hattiloo, and the Ostrander winning production of JITNEY at Hattiloo. Dawn is deeply steeped in the world of education. She is a founding primary Montessori instructor at Libertas School of Memphis. She is also the practicum guide of their onsite training program. In addition to her work at Libertas, Dawn has provided consulting services for schools across the United States, most notably, the Harvard School of Education. Currently, Dawn is pursuing her master's at a distance from the University of Birmingham United Kingdom. Dawn is blessed to be the mother of two wonderful children. She would like to send a special thank you to her husband, Derrick, for his consistent support and love.

**Travis Bradley** (Director/Choreographer) has danced for Ballet Memphis, Houston Ballet, Richmond Ballet, and Julia Adam Dance, SF. He has performed many memorable roles and originated multiple roles and works with choreographers from around the globe. He has created numerous works for Ballet Memphis including SLEEPING BEAUTY, THE UGLY DUCKLING, and STEP OUT OF THE SHADOWS and choreographed for Houston Ballet II. For Playhouse on the Square, he has co-directed/choreographed MEMPHIS THE MUSICAL, DREAMGIRLS, THE CURIOUS INCIDENT OF THE DOG IN THE NIGHT-TIME and ONCE THE MUSICAL, and co-choreographed KISS ME KATE, CABARET, ROCK OF AGES, MAMMA MIA!, THE ROCKY HORROR SHOW, HAIRSPRAY, SISTER ACT, SHAKESPEARE IN LOVE, PETER PAN, SPAMALOT, PAGEANT, and was movement consultant for LORD OF THE FLIES. Travis also performed in Playhouse's production of BILLY ELLIOT where he played the role of Adult Billy, and Alonzo in TM's production of CATS THE MUSICAL. He has co-directed/choreographed CATS THE MUSICAL; HAIRSPRAY; HELLO, DOLLY!; NEWSIES; and THE DROWSY CHAPERONE and co-choreographed BEAUTY AND THE BEAST, SOUTH PACIFIC, and SHREK THE MUSICAL, all for Theatre Memphis. Travis recently co-directed/choreographed SPRING AWAKENING for Serenbe Playhouse. He has created numerous works for Project: Motion, Lost in Found, and choreographed Opera Memphis' PIRATES OF PENZANCE. He assistant directed/co-choreographed THE KING AND I, THE MUSIC MAN, and A CHRISTMAS CAROL for DeSoto Family Theatre and BLOODY BLOODY ANDREW JACKSON for Rhodes College. He has received multiple Ostrander Awards including Best Direction, Best Musical Production, and numerous Best Choreography awards. He also received an Allie Award for Best Musical, and received the Michael Wasmund Award in Houston for his love and dedication to dance. Travis is also represented by Colors Talent Agency.

**Jeffery Brewer** (Music Director/Conductor) has bachelor and master's degrees in Music Education from Wichita State University and earned a doctorate in Choral Conducting and Choral Literature from the University of Missouri at Kansas City. He had a 35-year teaching career and has been the Director of Music at Kingsway Christian Church in Germantown for the past 26 years. Jeff has been music directing shows at Theatre Memphis since 2012 with numerous Ostrander nominations and wins for Excellence in Music Direction. He first saw a production of RAGTIME in 2003 at Playhouse on the Square and absolutely fell in love with the compelling story and the amazing music score. "Every number is essential for the telling of this story, and every number is a musical masterpiece. Music directing RAGTIME has been on my wish list ever since. To get to do this show with Jordan and Travis and this incredible cast has been a dream come true. This cast has been fully invested in this show since day ONE, making the rehearsal process a true joy! This experience has challenged us all, including myself, but the end product is well worth the hard work. I only hope you all will love this production as much as we do! Special kudos and thanks to my amazing orchestra...they are gifted musicians and treasured friends."

**Vera Brown** (Ensemble) is an 18-year-old freshman at Webster University and is so excited to be back on the TM stage after 3 years! She would like to give a special thanks to Jordan and Travis for giving her the opportunity to be a part of such an amazingly talented cast.

---

# Who's Who

---

**Parker Dinwiddie** (Grandfather) also played Grandfather in *RAGTIME* at Playhouse on the Square in 2011. He last appeared at Theatre Memphis in the 2019 production of *1776*. Other TM shows include *SHENANDOAH*, *MY FAIR LADY*, *CYRANO*, *THE ODD COUPLE*, and *HARVEY*. A retired Navy Commander, he thanks his family for their love and support.

**Lauren Duckworth** (Mother) is thrilled to be making her Theatre Memphis debut. While she grew up doing theatre in Memphis, Lauren recently moved back from Los Angeles with her husband and two kids. Previous credits include *THE TALLS* at Second Stage in New York. Lauren is a proud graduate of the University of Michigan's Musical Theatre Department.

**Zan Edwards** (Ensemble) is a native of Bruce, MS and a graduate of Ole Miss, where she earned a BA in Theatre Arts with a minor in Sociology. Credits include Lorrell in *DREAMGIRLS*, Dionne in *HAIR*, Tina Turner in *THE WEDDING SINGER*, *HAIRSPRAY*, Lady in Green in *FOR COLORED GIRLS*, and Urchin (Chiffon) in *LITTLE SHOP OF HORRORS*. She is more than excited to use this production of *RAGTIME* as a springboard into furthering her performance career. Always thanking God, she would also like to thank her family and friends for their love and support.

**Lindsay Ferreira** (Ensemble) (she/her) is thrilled to return to the Theatre Memphis stage after so long. Some of her favorite credits include Celia in *AS YOU LIKE IT*, Mother Abbess in *THE SOUND OF MUSIC*, and Glory/Villain in *ALMOST, MAINE*. She would like to thank the cast, crew, and everyone on the production team for their hard work.

**Thedrick Griffin** (Ensemble) is a Memphis original. He is an aspiring musician, model, and actor. He enjoys singing, karaoke, acting, modeling, playing the piano and violin, and desires to improve his Spanish and American Sign Language. He graduated from LeMoyné-Owen College in 2020 with a music degree and has had the opportunity to sing in the 105 Voices HBCU Choir for *MLK50* (2018) under the music direction of Dr. Roland Carter. He has participated in musicals such as *JOSEPH AND THE AMAZING TECHNICOLOR DREAMCOAT* (2016), *DREAMGIRLS* (2017), *CLOSER THAN EVER* (2018), and played the leading role of Ugly in *HONK THE MUSICAL* (2018) with the Memphis Black Arts Alliance (MBAA). He has also sung under the music direction of Dr. Robert Moody for different projects with the Memphis Symphony Orchestra (MSO) and under the direction of Dr. Ryan Fisher of the Memphis Choral Arts. Thedrick wishes to pursue musical theater and to reach the Disney platform and more!

**Maggie Jackson** (Stage Manager) is excited to be joining Theatre Memphis for the second time this season. She worked on *LA CAGE AUX FOLLES* as an Assistant Stage Manager and is thrilled to continue her work with this wonderful community. She would like to thank the TM staff, directors, and the cast and crew for the opportunity to be a part of such a powerful production. Lastly, she would like to thank her family and Mrs. Terri Matz for all their love and support.

**Jeanna Juleson** (Ensemble) is excited to be in this show with such a talented cast and crew. Many thanks to Jeff, Travis, and Jordan. Jeanna has appeared on Memphis stages for over 35 years. This season, she played Mrs. Medlock in *THE SECRET GARDEN*, and has worked with Jordan and Travis in *THE DROWSY CHAPERONE*, *GYPSY* and *BILLY ELLIOT*. Favorite shows include *ANGELS IN AMERICA*, *THE MAN WHO CAME TO DINNER*, *THE COUNTRY HOUSE*, *9 TO 5 THE MUSICAL*, and *TO KILL A MOCKINGBIRD*.

**Claire D. Kolheim** (Assistant Director) is excited to be back in Memphis, and working with Jordan and Travis again! She is a 5-time Ostrander Award winning performer and the first recipient of the Diversity on Stage and Film Award for Best Actress. She was last seen performing in the Peterborough Players' production of *BEEHIVE, THE MUSICAL!* in New Hampshire. Prior to the pandemic, she was a part of several Disney Cruise Lines productions aboard the Disney Magic where she graced the stages performing in *TWICE CHARMED: A CINDERELLA STORY*, *TANGLED THE MUSICAL*, and *DISNEY DREAMS*, which she was the featured soloist in performing, "The Circle of Life". Claire has had the great fortune of being a Resident Company Member at Playhouse on the Square for seven years where some of her credits include Celie in *THE COLOR PURPLE*, Gary Coleman in *AVENUE Q*, Sarah in *RAGTIME*, and Ann Atwater in *BEST OF ENEMIES*. She also has worked in regional commercials, the feature film *BRIAN BANKS*, and has been a featured soloist for the Boston Gay Men's Chorus and Opera Memphis. "I am really excited to be starting my directorial journey and assistant directing with this production of *RAGTIME*. I hope everyone who sees this production leaves with a sense of hope for themselves, their communities, and our world. Thank you to Debbie Litch, Jordan, Travis, and the Theatre Memphis family for welcoming me. And a HUGE congratulations to the entire cast and crew of *RAGTIME*! Make them hear you!" Claire sends a special shoutout to her husband, Kendall, for his endless love and support throughout this crazy time and love to their three dogs (Kingston, Gabby, and Barkley). "Love to Foxy!" For more information about Claire, visit [cdkolheim.com](http://cdkolheim.com) or on all social media outlets @Kolhobama.

**Johnathon Lee** (Sarah's Friend) is a junior Theatre major with a concentration in Musical Theatre. He has performed in places like Washington, D.C., Mississippi Delta, Los Angeles, and has even toured in Europe. His previous credits include *GHOST*, *MEMPHIS THE MUSICAL*, *SONGS FOR A NEW WORLD*, and *PIPPIN*. He has recently been seen in the critically acclaimed *SOUL KIDS*. He would like to thank his parents and most of all God! As an artist, he hopes to inspire and motivate young individuals to follow their dreams and never settle. "Keep grooving!" @Johnsings\_ (He/Him)



---

# Who's Who

---

**Kevar Maffitt** (Father) is a graduate of William Carey University where he received a BA in Theatre and studied voice under Connie Roberts. He was last seen on stage in the Playhouse on the Square production of *TORCH SONG* (Arnold) at the Circuit Playhouse, and before that *KINKY BOOTS* (Don). He has also appeared in *AN ACT OF GOD* (God) and *SHREK* (Lord Farquaad) at Theatre Memphis, as well as the Germantown Community Theatre production of *THE GLASS MENAGERIE* (Tom). Kevar recently returned to Memphis from a lengthy pandemic in Chicago, IL, and is thrilled to be back on stage at Theatre Memphis! "If you're still reading this, here's a little tip: Olive oil will only stay fresh for about 30 days after you open it. Use it or lose it."

**John Maness** (Tateh) was most recently seen at Theatre Memphis as John Adams in *1776* and Col. Jessep in *A FEW GOOD MEN*. John holds a BFA in Theatre Performance from the University of Memphis and an MFA in Directing from Indiana University. Other favorite roles include *OTHELLO* (Iago), *A STEADY RAIN* (Joe), and *THE GLASS MENAGERIE* (Tom), as well as the eponymous roles in *HAMLET*, *AMADEUS*, and *HEDWIG AND THE ANGRY INCH*.

**Jacob Mohler** (Ensemble) is excited to be in his second production at Theatre Memphis. Jacob is a junior at the University of Memphis studying engineering. He would like to thank the creative team, his family, and God for the opportunity to be in this show and help tell this amazing story.

**Jordan Nichols** (Director/Choreographer) At TM, Jordan helmed the production of Rodgers & Hammerstein's *SOUTH PACIFIC* and co-choreographed Disney's *BEAUTY AND THE BEAST* and *SHREK THE MUSICAL*. He also co-directed and co-choreographed *THE DROWSY CHAPERONE*, *NEWSIES*, *HAIRSPRAY* (Ostrander Award – Director), and *CATS THE MUSICAL*. At Playhouse on the Square, Jordan served as Director/Choreographer on *ONCE THE MUSICAL*, *LORD OF THE FLIES*, *MAMMA MIA!*, *MEMPHIS THE MUSICAL*, *KISS ME KATE*, *MISS SAIGON*, *AVENUE Q*, *PETER PAN*, *GYPSY*, and *THE FANTASTICKS*. Elsewhere, he has directed *MEMPHIS THE MUSICAL* and *SPAMALOT* at Midtown Arts Center in Fort Collins, Colorado (Henry Award Nomination), *BLOODY BLOODY ANDREW JACKSON* at Rhodes College (Ostrander Award – Director), and *THE MUSIC MAN* and *THE KING AND I* at DeSoto Family Theatre (Allie Award – Director/Musical). As a Choreographer, Jordan has worked on *HAIRSPRAY* (Ostrander Award), *KISS ME KATE* (Ostrander Award), *PAGEANT*, *ROCK OF AGES*, *SISTER ACT*, *THE DROWSY CHAPERONE*, *SPAMALOT*, and *THE ROCKY HORROR SHOW*. Jordan is a proud member of Actors' Equity and performed in the 25th Anniversary National Tour of *LES MISÉRABLES* and also in the off-Broadway production of *THE FANTASTICKS*. He is currently Director of New Works at Playhouse on the Square. He is also a new real estate agent with Marx-Bensdorf, REALTORS. You can check out JordanSellsMemphis.com or follow him on Instagram @JordanSellsMemphis

**Jim Patterson** (Little Boy) is a 3rd grader at St. Dominic School. He caught the theater bug last summer at St. Agnes-St. Dominic theatre camp where he starred as Kristoff in *FROZEN*. In his free time, he loves reading fantasy, playing video games, and hanging out with friends and family. He would like to thank everyone at Theatre Memphis for the warm welcome and opportunity and mom, dad, and gg for the rides and encouragement!

**Chelsea Robinson** (Assistant Stage Manager) has been a volunteer at Theatre Memphis for over 10 years. Some of her staging managing credits with TM are: *LA CAGE AUX FOLLES*, *HELLO, DOLLY!*, *MAMMA MIA!*, *THE MAN WHO CAME TO DINNER*, and *SHREK THE MUSICAL*. You also may have seen her in various roles in *A CHRISTMAS CAROL*. She would like to thank the entire directing team, designers, and the cast and crew for creating a beautiful and powerful production, and a special thank you to the staff at Theatre Memphis for keeping us all safe and healthy.

**Brandon Sewell Jr.** (Ensemble) is a rising senior at Germantown High School. Prior to *RAGTIME*, he played Ren McCormack in *FOOTLOOSE: THE MUSICAL* at Poplar Pike Playhouse, which was nominated for best overall production at the HSMTAS. Brandon is very involved in the arts, being in two choirs, a Film CAPA student, a news anchor and producer of GHS-TV, and much more. He has been a DJ for seven years as well. Brandon's goal last year was to get into Theatre Memphis one day. He achieved that goal now as he is working on this fabulous production. He is very thankful for this opportunity and hope everyone enjoys the show!

**Sadie Shannon** (Ensemble) has a BA in Music from WCU and MFA in Acting from The University of Alabama. She was last seen as Marmee in *LITTLE WOMEN* at Panola Playhouse under the direction Wesley Williamson. She is grateful and excited to be making her TM debut with this outstanding cast and crew. "Enjoy the show!"

**Caroline Simpson** (Ensemble) is very excited to be back on stage after the last two years. Regional credits include: *PETER PAN* (Peter Pan), *URINETOWN THE MUSICAL* (Hope Cladwell), *DAYS OF RAGE* (Peggy), *WHEN WE GET GOOD AGAIN* (Nadiya, Ostrander nomination), *HAIRSPRAY* (Penny, Ostrander nomination), *THE DROWSY CHAPERONE* (Kitty), and *CATS THE MUSICAL* (Rumpleteazer). Caroline is an alumna of Belmont University and has toured with ArtSpot Educational Theatre in Mexico, Bahrain, Oman, United Arab Emirates, Turkey, Argentina, and Uruguay. Caroline wishes to thank her family, friends, and her cats, Roman and Leaf, for always supporting her. "Let the Sunshine In."

**John Brenton Strauss** (Harry Houdini) is thrilled to be making his Theatre Memphis debut in *RAGTIME*. He would like to thank his wife, Morgan, who is his rock and inspiration, for all of her support.

**Justin Allen Tate** (Coalhouse) was most recently seen at TM in HELLO, DOLLY! as Cornelius Hackl and in LA CAGE AUX FOLLES as Chantal. He also played the role of Lola in the Regional Premiere of KINKY BOOTS at Playhouse on the Square. National Broadway Tours: SMOKEY JOE'S CAFÉ, FLASHDANCE THE MUSICAL, and CIRQUE DREAMS. Lead Vocalist for Royal Caribbean International and Holland America Line for five years. Background vocalist for K. Michelle, Blake Shelton, Kristin Chenoweth, and Gene Simmons of KISS. USO Show Troupe performing for our military for four years. Regional Theatre: AIN'T MISBEHAVIN', 42ND STREET, VIOLET. National Anthem singer for NBA, NASCAR, MLB, NHL and NFL games. Graduate of The American Musical & Dramatic Academy. "As always, I love my mom, Andrea Tate Boykins. You are my hero! My performance is dedicated to the memory of my grandfather Mr. Allen Watkins." [www.justinallentate.com](http://www.justinallentate.com)

**Claiborne Thomas Jr.** (Booker T. Washington) Being both a performer and a teacher in the theater industry, Claiborne Thomas Jr. is excited to do his fifth show on the Theatre Memphis stage. After performing in Los Angeles for 8 years, Claiborne has recently moved back to Memphis to be closer to his family. Being an adventurous spirit, Claiborne has performed and trained on various stages on the West Coast and Midwest. A few of his notable roles are: Lenny in Neil Simon's RUMORS, Tom Collins in Jonathan Larson's RENT, and as one of the Buffalo Bills Quartet members in THE MUSIC MAN. Claiborne is very excited to continue his theatrical career here at Theatre Memphis and is looking forward to sharing the stage with this incredible cast.

**Tracy Thomas** (Emma Goldman) is the Assistant Professor of Musical Theatre at the University of Memphis Department of Theatre and Dance. Twenty-one national/international tours as a singer/actor/musician, including ONCE (Baruska/Production Musical Supervisor), CHICAGO (Company Manager), THE SOUND OF MUSIC (Mother Abbess/Elsa Understudy), and FIDDLER ON THE ROOF (Associate Music Director). Regional leading/supporting roles in TWELFTH NIGHT (Taub), ONCE, NEXT TO NORMAL, WEST SIDE STORY, GREASE, GUYS AND DOLLS, JOSEPH AND THE AMAZING TECHNICOLOR DREAMCOAT, COMPANY, and FIDDLER ON THE ROOF. Leading opera/oratorio roles in MARRIAGE OF FIGARO, DON GIOVANNI, AMAHL AND THE NIGHT VISITORS, Brahms' REQUIEM, Beethoven's Ninth Symphony, Mendelssohn's ELIJAH, and Mozart's MASS IN C (Lincoln Center debut). She has been Music Director for many productions, most recently ORDINARY DAYS, KINKY BOOTS, MATILDA, BEEHIVE THE MUSICAL, VIOLET, [TITLE OF SHOW], DROWSY CHAPERONE, COMPANY, SPRING AWAKENING, WORKING, INTO THE WOODS, MAN OF LA MANCHA, LITTLE SHOP OF HORRORS, CHICAGO, and GODSPELL. She is an Opera Memphis Company Member and former Presidential Vocal Soloist with numerous solo appearances on live television and NPR. Tracy is a proud graduate of the IU Jacobs School of Music and the University of Cincinnati College-Conservatory of Music.

**Cassie Thompson** (Evelyn Nesbit) recently got married and is very excited to be here! This season, she has performed in URINETOWN THE MUSICAL (Penelope Pennywise) at TM and MAY WE ALL (Liz) at Playhouse on the Square. Past TM credits include CATS THE MUSICAL, MAMMA MIA!, CABARET, ANNIE GET YOUR GUN, A CHRISTMAS CAROL, JOSEPH AND THE AMAZING TECHNICOLOR DREAMCOAT, and 2 seasons performing with ShoWagon. [www.cassiemthompson.com](http://www.cassiemthompson.com)

**Cary Vaughn** (Ensemble) Though he has performed on various stages around Memphis since 2001, this marks Cary's sixth appearance at Theatre Memphis. Favorite roles include Greg in THE BOY FROM OZ, Marvin in FALSETTOS, and Sam in MAMMA MIA!. When not on stage or in rehearsal, Cary devotes his time to reading, creative writing, caring for four heathen cats, and sharing laughter with his favorite person in the world for the past 17 years, his husband Steven.

**Gabrielle Willingham** (Sarah's Friend) is ecstatic to be a part of the cast of RAGTIME as Sarah's Friend. This is her first show outside of her high school theatre at St. Agnes Academy. Gabrielle is thankful to God for helping her be brave and audition for the show. She would like to thank everyone involved in this incredible production and hopes everyone is moved by the incredible story.

**JD Willis** (Younger Brother) is a rising sophomore at Rhodes College. Originally from Huntsville, AL, JD is currently pursuing a double major in Music and Computer Science. Away from the stage, JD can be found either in his bed watching whatever show he is currently watching, or hiding in one of the on-campus practice rooms. He would like to thank the incredible cast, crew, and creative team for giving him the opportunity to do this show. He would also like to thank his family and friends who always continue to support and encourage him. Instagram: @jaydeewillis

**Katie Wolfe** (Assistant Lighting Designer) is a Memphis native currently pursuing her BFA in Lighting Design and BEE in Electrical Engineering at Auburn University. She is excited to be back in her home town doing what she loves again! Most recently in Memphis, she served as the Assistant Lighting Designer for HAIRSPRAY! Her favourite credits of all time include ACT WITHOUT WORDS (Lighting/Scenic Designer), THE HUNCHBACK OF NOTRE DAME (Lighting Designer), and THE WOLVES (Lighting Designer).

**Atam Woodruff** (Henry Ford) decided to move back to Memphis in 2019 after being away for three years. Atam currently works as the Fine Arts Teacher at St. George's Independent School's Memphis campus, as well as co-directs the Queer & Allies Theatre Troupe (with friend Carly Crawford) at Playhouse on the Square. RAGTIME has always been a show on Atam's "to-do" list, so he is thrilled to make this his last show before he takes a break from performing next year. "Thank you all for coming out and supporting the arts. To all of you, stay safe and enjoy the show."

# ACKNOWLEDGMENTS

*Special thanks to*

## HONORARIUMS

**Gary Beard and Joe Lackie** from *EJ Baird*  
**Dr. Jeffery Brewer** from *Lisa Petro*  
**Kaitlin Brucker** from *Ed and Jan Brucker*  
**Amy Salerno Hale** from *Susan and Bill Andrews*  
**Dr. Jean Hayden's 100th Birthday** from *Bill Short*  
**Jared Thomas Johnson** from *Mr. and Mrs. Robert Gooch, Jr.*  
**Debbie Litch** from *Mr. and Mrs. Robert Gooch, Jr.*  
**Debbie Litch's Birthday** from *Wendy Carpenter, Pam and Fred Montesi*  
**Dr. and Mrs. Mel Litch** from *James C. and Anne Fleming*  
**The Marriage of Michael Swain and Amy Acker** from *Kenneth Hoskins,  
Scott and Audra Spielberg*

## MEMORIALS

**Irvin D. Califf** from *Doris Califf*  
**Jerry Chipman** from *Mr. and Mrs. Robert Gooch, Jr., Karen and Murray Riss*  
**Kathryn Bizzell Leigh** from *Angie Couch*  
**Harold Richardson** from *Gary Beard and Joe Lackie, The Burns Family,  
Hugh Coker and John McDonald, Jude Knight, Dr. Mel and Debbie Litch, Billy Pullen,  
James Richardson, Edward Sharp, Bill Short, Gail Smithers, Carla Zust*  
**John Rone** from *Susan and Bill Andrews, Louise Levin, Clay Marler Stone*  
**Sara Savell** from *Barclay Roberts and Mark Jones*  
**Ann Sharp** from *Louise Levin, Edward Sharp*  
**Meredith Pritchar** from *Dorothy O. Kirsch*  
**André Bruce Ward** from *Mrs. Foy Coolidge, Dabney Coors,  
Eda Fain and Vince Lemorocco, Martha and Jerrold Graber, Phyllis H. Grant,  
Mr. and Mrs. Robert Gooch, Jr., Jerry K. Jensen, Jude Knight, Louise Levin,  
Pam and Fred Montesi, Billy Pullen, Barclay Roberts and Mark Jones,  
Edward Sharp, Bill Short, Ann Sullivan, Gail and Page Williamson*

~ Your *Neighborhood* Realtors ~



**Katie Cook**  
kcook@m-brealtors.com  
cell: 901-628-3065  
katiesellsmemphis.com

**Jordan Nichols**  
jnichols@m-brealtors.com  
cell: 901-270-5372  
jordansellsmemphis.com

**Marx-Bensdorf**  
REALTORS®  
office: 901-682-1868  
5860 Ridgway Center Parkway – Memphis, TN 38120

LEADING REAL ESTATE  
COMPANIES OF THE WORLD®

# Musical Numbers

## Act I

### Prologue

*Ragtime* ..... Company

### Scene 1: Dock in New York Harbor/At Sea

*Goodbye, My Love* ..... Mother

*Journey On* ..... Father, Tateh, Mother

### Scene 2: A Vaudeville Theater, New York City

*The Crime of the Century*..... Evelyn Nesbit, Mother's Younger Brother, Ensemble

### Scene 3: Mother's Garden, New Rochelle

*What Kind of Woman*..... Mother

### Scene 4: Ellis Island/Lower East Side

*A Shtetl Iz Amerek*..... Tateh, The Little Girl, Immigrants

*Success* ..... Tateh, J.P. Morgan, Harry Houdini, Ensemble

### Scene 5: The Tempo Club/Harlem/Ford's Assembly Line

*Gettin' Ready Rag* ..... Coalhouse, Ensemble

*Henry Ford* ..... Henry Ford, Coalhouse, Ensemble

### Scene 6: Railroad Station, New Rochelle

*Nothing Like the City* ..... Tateh, Mother, The Little Boy, The Little Girl

### Scene 7: Emerald Isle Firehouse

### Scene 8: Mother's House, New Rochelle

*Your Daddy's Son*..... Sarah

*New Music*..... Father, Mother, Younger Brother, Coalhouse, Sarah, Ensemble

### Scene 9: A Hillside above New Rochelle

*Wheels of a Dream*..... Coalhouse, Sarah

### Scene 10: A Union Hall in New York City/Lawrence, Massachusetts/A Train

*The Night that Goldman Spoke at Union Square*..... Younger Brother,

Emma Goldman, Ensemble

*Lawrence, Massachusetts*..... Ensemble

*Gliding* ..... Tateh

### Scene 11: New Rochelle and New York City

*Justice*..... Coalhouse, Ensemble

*President* ..... Sarah

*Till We Reach That Day*..... Sarah's Friend, Coalhouse, Emma Goldman,  
Younger Brother, Mother, Tateh, Ensemble

Theatre Memphis has received special funding from the TN Nonprofit Arts & Culture Recovery Fund. Several of our projects are being supported, in whole or in part, by federal award number SLFRP5534 awarded to the State of Tennessee by the U.S. Department of the Treasury.

Theatre Memphis is grateful for this outstanding aforementioned grant administered by the Tennessee Arts Commission.



# Musical Numbers

## Act II

### Entr'acte

*Harry Houdini, Master Escapist*..... The Little Boy, Harry Houdini

### Scene 1: The Streets of New Rochelle/Mother's House

*Coalhouse's Soliloquy*..... Coalhouse

*Coalhouse Demands* ..... Company

### Scene 2: The Polo Grounds

*What A Game* ..... Father, The Little Boy, Ensemble

### Scene 3: Mother's House

*Atlantic City* ..... Evelyn Nesbit, Harry Houdini

*New Music (Reprise)* ..... Father

### Scene 4: Atlantic City/Million Dollar Pier/Boardwalk

*Atlantic City, Part II* ..... Ensemble

*The Crime of the Century/Harry Houdini, Master Escapist (Reprise)*..... Evelyn Nesbit,  
Harry Houdini

*Buffalo Nickel Photoplay, Inc* ..... Baron Ashkenazy

*Our Children* ..... Mother, Baron Ashkenazy

### Scene 5: Harlem/Coalhouse's Hideout

*Sarah Brown Eyes* ..... Coalhouse, Sarah

*He Wanted to Say* ..... Emma Goldman, Younger Brother, Coalhouse, Coalhouse's Men

### Scene 6: The Beach, Atlantic City

*Back to Before* ..... Mother

### Scene 7: The Morgan Library, New York City

*Look What You've Done* ..... Booker T. Washington, Coalhouse, Coalhouse's Men

*Make Them Hear You* ..... Coalhouse

### Epilogue

*Ragtime/Wheels of A Dream (Reprise)* ..... Company

### About the Lobby Artist ... Frank Lilly

Frank is a native of Clarksdale, MS, and studied at the Memphis College of Art in the 1960's. It wasn't until Frank was in his mid -50's that his work was publicly exhibited. Though he painted continuously throughout his adult life, most of his time was spent making a living for himself and his family. But even at his jobs, most notably the years he spent as operations foreman at Memphis' Mid-South Coliseum, Frank would find scraps of signs, posters and other materials and add them to his paintings. After years of creating art work that he would either give away or keep for himself, his friends and family encouraged him to approach the Universal Art Gallery in Memphis where his work was then displayed to the general public for the first time in his life. Today he continues painting and creating mixed media pieces for a wider audience. As a true folk artist, his work clearly illustrates many events from his life and times. His paintings and mixed media pieces may be impressionistic but never abstract.

To purchase Frank's art in our lobby, please contact our Box Office.

## RAGTIME CREW

### Stage Manager

Maggie Jackson

### Assistant Stage Manager

Chelsea Robinson

### Assistant Lighting Designer

Katie Wolfe

### Sound Operator

Nathan Greene

### Costume Construction

Cathy Bascom, Ann Bock, Georgia Fortune,  
Julia Horne, Pam Johnson

### Lighting Crew

Max McClung, Kaylee Webb

### Spotlight Operators

Judith Cardoso, Olivia Maness

### Set & Properties Construction

Michael Compton, Mark Fernandez,  
Mandy Kay Heath, David Horne,  
Mary Houston, Mark Kimberling,  
Doug Laurie, Jack Netzel-Yates,  
Chelsea Robinson, Kaylee Webb

### Flyrail

Bryan Benjamin

### Stage Crew

Jess Fuller

### Substitute Crew

Olivia Caspersen, Christina Hendricks,  
Max McClung

### Auditions

David Allen, Lisa Chang,  
Christina Hendricks, Amy Mulroy,  
Jeffrey Posson, Cathy Richardson,  
Harold Richardson

## Join in on our 2022-23 season!

- GUYS AND DOLLS
- MUCH ADO ABOUT NOTHING
- ARSENIC AND OLD LACE
- IMMEDIATE FAMILY
- A CHRISTMAS CAROL\*
- SONDHEIM TRIBUTE
- MACBETH
- THE PLAY THAT GOES WRONG
- MRS. MANNERLY
- SHERLOCK'S LAST CASE
- MARY POPPINS

Check out all the membership information at  
[www.theatrememphis.org/2022-2023-season](http://www.theatrememphis.org/2022-2023-season).

**Join by June 28, 2022, and save almost 60%**  
over single ticket prices with a membership.

**Call 901.682.8323 to join.**

*\*Not part of the membership*



VENICE  
KITCHEN

Venice-Kitchen.com

368 Perkins Ext.

(901)767-6872

Proud Partners with Theatre Memphis

# SHINE ON Donors

## ANGELS

Gene & Sandra Cochran

## BENEFACTORS

Assisi Foundation

City of Memphis

Charles & Catherine Freeburg

Plough Foundation

## PRODUCERS

AutoZone

Kitty Cannon & Jim Waller

Community Foundation of Greater Memphis

First Horizon Foundation

Dr. Mel & Debbie Litch

Jerry & Elizabeth Marshall

Menke Family Foundation

## PATRONS

Arthur F. & Alice E. Adams Foundation

Thomas W. Briggs Foundation

George & Bena Cates

Keith & Katie Cole

James Humphreys

Jeniam Foundation

Dorothy O. Kirsch

Seldon & Carolyn Murray

Dr. Thomas Ratliff

Bill Short & John Rone

Winston Wolfe

## STARS

Dr. Anita Arnold

Bert & Carol Barnett

Gary Beard & Joe Lackie

Estate of Richard & Carole Briscoe

Grinder, Taber & Grinder, Inc.

Sims Family Charitable Trust

Deborah Dunklin Tipton

## PRINCIPALS

David & Sarah Allen

ArtsMemphis

Jim & Linda Brigance

Foy Coolidge

Clair E. Cox

William, Jr. & Tommie Dunavant

Bryan & Tracey Zerwig Ford

Dr. Thomas M. Fortner

Ray & Betha Gill

Jerrold & Martha Graber

Dr. Shawn Hayden

Marc & Sallie Helm

Bill & Barbara Johns

Brig Klyce

Ellen Cooper Klyce

Jude Knight

Bobby & Janette (JJ) Krauch

Sue Baldwin Lackie

Jim & Margie Lackie

Michael & Shirley Lupfer

Ramon, Jr. & Elisa Marus

Richard & Margaret Myers

Dan & Virginia Norton

Dennis & Sarah Norton

Jim & Betsy Pentecost

Harold & Cathy Richardson

Charles F. Smith, Jr.

Shannon Sparks

André Bruce Ward

Billie Anne Williams

Page & Gail Williamson

Bennett Wood

## LEADING PLAYERS

Jon & Cathy Bascom

Richard & Debbie Binswanger

Jerry Chipman & Emiliano Livellara

Dabney Coors

H.B. & Susan Courson-Smith

Dr. Suzanne Gronemeyer

Henry & Heather Grosvenor

John & Janice Hall

John Jerit

Louise Levin

Edward & Ann G. Sharp

Stage Set

Lewis & Barbara Williamson

## SUPPORTING PLAYERS

Patsy Alexander

Barry & Joan Michelle Allmon

Dr. & Mrs. Phil Aronoff

Sally Baker

Christy Ballard

George & Carol Barnes

Hal & Lori Beckham

Charles and Pat Beech

Belz Foundation

Stanley & Dot Bilsky

Sue Binnie

Nick & Lena Wallace Black

Andrew Blankenship

Katherine Blount

Marjorie Bowman

Astrid Braganza

Jeffrey Brewer

Wallace & Olivia Bruce

Bob & Janie Bruno

Frances "Dodie" Calil

Daniel & Wendy Carpenter

Mary Carr

James & Jean Chang

Yeow & Lisa Chang

Irvine & Gloria Cherry

John & Sally Coleman

## SHINE ON Donors

Michael & Karen Compton  
Dan & Nora Conaway  
Giles & Elizabeth Coors  
Mary Lee Copp  
Clarice Cox  
Bill & Lucia Cromer  
Philip & Debbie Dees  
Jed Dreifus  
Mark & Susanne Edwards  
Amie Eoff  
Eric and Cindy Eurich  
Donna Fisher  
Dr. James Chris & Anne Fleming  
Gregory Fletcher  
Mabry & Kim Ford  
Julie Freeman & Stuart Heyman  
Johnny Gaither  
Lee & Betsy Gilliland  
John Grannan  
Mimi Grossman & Alvin Franklin  
Greg & Amy Salerno Hale  
Jon & Christi Gray Hall  
Robert Hanusovsky  
Linda Harris  
Bo & Lydia Hart  
Randall Hartzog & Todd Stricklin  
Hauber Foundation  
Pamela Hauber & Steve West  
Allan & Marcia Hayden  
Lisa Hall-Hayes  
Jon & Mandy Heath  
Dr. Henry & Ann Herrod  
Bruce & Janie Hopkins  
Jerry & Annette Hosier  
Allan B. Hubbard  
Jim & Natalie Jalenak  
Jared Johnson & Josh Whitehead  
Karen Johnston  
Rose Johnston  
Gene & Carol Katz  
Michael & Anne Keeney  
Ann Knox  
Edwin Koshland III  
Lindsay Krosnes  
Susan Labovitz  
Barbara Lapidés  
Jim & Susan Lattimore  
Dr. Rudy & Sarah Laucirica  
Florence Leffler  
Bridge Leigh  
Dr. Myron & Gail Lewis  
Meghan Lisi Lewis  
Dr. Robert & Lola Llewellyn  
Van & Julia Manning  
Charles & May Lynn Mansbach  
Melinda McCloy  
Lynn McDonald

John McQuiston  
Rodgers & Nancy Menzies  
Mid-South Grain Inspection Service  
Joyce Mollerup  
Mimi Gay Morgret  
Larry & Judy Moss  
Kimbrough Mullins  
Dr. Robert Burns & Dr. Linda Nichols  
Fred Nowak  
Nuance Foundation  
Dr. Stewart & Madeline Nunn  
Art Oden  
Marjorie Palazzolo  
Lyda Parker  
Josh & Elizabeth Perkins  
John & Natalie Pettey  
Frank & Judy Potter  
Allie & Barbara Prescott  
Nichol Pritchard  
Mark Puckett  
Billy Pullen  
Betsy Reeder  
Renaissance Group, Inc.  
Jim Renfrow & Brantley Ellzey  
Jim & Mary Jane Richens  
Vicky Rimstidt  
Murray & Karen Riss  
Wilson Turner Robbins  
Barclay Roberts & Mark Jones  
John & Anne Robilio  
Mark Rosenberg & Pam Martin  
Marco & Cynthia Ross  
Mr. and Mrs. Kevin Ruby  
Mark & Mary Ruleman  
Steve & Debby Schadt  
Philip Schaeffen  
Don & Elizabeth Scott  
Jeanette Silberberg  
Rouben & Elizabeth Simonian  
Ron & Linda Sklar  
John & Patricia Sorce  
Roland & Shirley St. Hilaire  
Jaclyn Suffel  
Richard K. Tanner & Dr. Bob Brown  
Asan Tejwani  
Blanche Tosh  
Mr. and Mrs. William M. Vaughn, Jr.  
Justin & Lesa Vernon  
Simon & Jill Wadsworth  
Bobby & Nancy Walton  
Mike & Marcia Weiss  
Whitehorn, Tankersley & Davis, PLLC  
Camilla Wilson  
Cecelia Wingate  
Jacob & Leah Beth Bolton Wingfield  
Kent & Susan Wunderlich  
Jack & Terry Netzel-Yates



# SIMON PEARCE



BABCOCK GIFTS

4538 Poplar Ave. • Laurelwood Shopping Center • Memphis, TN 38117 • 901-763-0700



Is Proud To Print the Banners & Lobby Posters  
used by *Theatre Memphis*

Order Online at [www.MemphisBanner.com](http://www.MemphisBanner.com)  
or call us at **901-759-0932** for your printing needs

*High Quality Banners without the High Quality Price*

# Home Surety Title

Home Surety Title and Escrow, LLC

Residential and Commercial  
Real Estate Closings

*Cierres Inmobiliarios  
Residenciales y Comerciales*



*The only SOC 2 certified  
closing firm in Memphis*

## Remote Online Closings



**Jeffrey F McEvoy**  
Attorney at Law

5583 Murray Rd. Ste #120  
Memphis, TN 38119  
(901) 737-2100

You will never again have to  
pay full price for groceries.



Just ½ block East of Theatre Memphis

## Thank you, Jeniam Foundation

for helping Theatre Memphis  
establish our cash reserve  
and maintenance funds.



Whitehorn  
Tankersley &  
Davis, PLLC

CERTIFIED PUBLIC ACCOUNTANTS

670 OAKLEAF OFFICE LANE / MEMPHIS, TENNESSEE 38117-4811 / (901) 767-5080 / (901) 767-5263 FAX

**Proudly supporting  
the Arts in Memphis**



# **2021-2022 Sponsors**

## **Presenting Season Sponsor**

First Horizon Foundation/ArtsFirst

## **Season Sponsors**

ArtsMemphis  
Tennessee Arts Commission

## **Production Sponsors and Center Stage Society**

AutoZone through Arts Memphis	Juve Salon Spa
Baptist Memorial Hospital	Dorothy O. Kirsch
Bert and Carol Barnett	Dr. Mel and Debbie Litch
Belz Foundation through ArtsMemphis	Jerry and Elizabeth Marshall
Dr. Jeff Brewer	The Mid-South Grain Inspection Service
Gene and Sandra Cochran	Menke Family Foundation
Creative Aging of the MidSouth	Marjorie Palazzolo
FedEx through ArtsMemphis	Dr. Thomas Ratliff
First Horizon Foundation through	John and Anne Robilio
ArtsMemphis	Edward Sharp and Charles Sharp
Dr. Tom Fortner	Stage Set
Grizzlies Charitable Foundation	Swain Wealth Partners,
International Paper	Mike Swain, Financial Advisor
Jones Bros. Tree and Landscape, a Davey Company	

## **The Gene and Sandra Cochran Legacy Society**

Anonymous	Steve and Angela Good
David and Sarah Allen	Edwin Harris
Bert and Carol Barnett	Dr. Mel and Debbie Litch
Richard Briscoe	Dr. Michael and Shirley Lupfer
Jerry Chipman	David Lusk and Carissa Hussong
Gene and Sandra Cochran	Jerry and Elizabeth Marshall
Keith and Katie Cole	Fred and Pam Montesi
Dabney Coors	Seldon and Carolyn Murray
Bryan and Tracey Zerwig Ford	Walter R. Smith
Charles and Catherine Freeburg	Asan G. Tejwani

# THEATRE MEMPHIS ARTISTIC STAFF

**Michael Compton** (Production Manager/Technical Director) This is Mr. Compton's 18th season as Production Manager for TM. He earned his BS in Technical Theatre from Illinois State University and was previously the Technical Director for the Players Theatre in Sarasota, FL. Ostrander Awards include lighting design for THOROUGHLY MODERN MILLIE and the Behind the Scenes Award for the 2006-2007 season.

**Amie Eoff** (Resident Costume Designer) is pleased to be the Resident Costume Designer at TM. From 2012-2014, she served as the Costume Shop Supervisor at Rhodes College, and in 2012, she completed her fourth season as the Resident Costume Designer for Circuit Playhouse. During her career, Amie has been nominated for 16 Ostrander Awards, and has won Best Costumes for PRESENT LAUGHTER; BLOODY, BLOODY, ANDREW JACKSON; THE PRODUCERS; 1776; SHREK THE MUSICAL; SIDE SHOW; and CATS. She holds an MFA in Costume Design from the University of Southern Mississippi. She has also worked on cruise ships with Jean Ann Ryan Productions and has designed for the Hangar Theatre in New York.

**Ashley J. Nickas** (Director of Stage Management and Volunteers) is thrilled to be rejoining the Theatre Memphis family after five years in NYC. During her time there, she gained stage management experience on Broadway, Off-Broadway, tour, and regional theatres. Some of her favorite credits include WE ARE THE TIGERS (Off-Broadway), SECRET COMEDY OF WOMEN (Tour), and interning with WICKED (Broadway).

**Mandy Kay Heath** (Resident Lighting Designer) has been a Memphis-based lighting designer since she earned her MFA from the U of M in 2014. She has worked artistically and/or technically for many companies in Memphis and several companies in Colorado and Iowa. She has been awarded several Ostrander and Allie Awards as well as an Honorable Mention for her work on CATS from the American Association of Community Theatre in 2021. [www.mkayheathdesigns.com](http://www.mkayheathdesigns.com)

**Ashley Selberg** (Costume Shop Manager) was born and raised just outside Memphis, Tennessee. She attended the O'More College of Design in Franklin, Tennessee, where she received a BFA in Fashion Design. While in college, she realized she enjoyed designing costumes, so she set out for the theatre world. She interned at Nashville Repertory Theatre and fell in love. After graduating, she became a costume technician for Ballet Memphis under head designer Bruce Bui. Since then, she has worked for many other theatres and even film production companies on shows like "Bluff City Law" and "Women of the Movement". In her spare time, she creates costumes of all kinds for Cosplay and Renaissance faires. Her works have been recognized in Memphis' Art at the Airport in 2009, the Congressional Art Competition of 2007, the Eloise O'More Fashion Show in 2013, MTAC Cosplay Best of Show Contest 2018, and Anime Blues Con 8 Cosplay Contest. "Costuming is my passion; there is just something magical about helping an actor, dancer, or everyday person feel special by creating the perfect costume that brings everything together."

**Jack Netzel-Yates** (Resident Scenic Designer/Properties Master) received his BFA in Theatrical Design and Production from Oklahoma City University in 2010. Now entering his ninth year with TM, he has previously worked for venues such as The Kalamazoo Civic Theatre, Light Opera Oklahoma, Oklahoma Shakespeare in the Park, City Rep., Ballet Memphis, and Tennessee Shakespeare Company. Jack has designed over 56 productions for TM, received 35 Ostrander Award nominations, and won Best Scenic Design for his work on THE HEIRESS (2014), THE PRODUCERS (2015), BEAUTY AND THE BEAST (2016), HAIRSPRAY (2018), and CATS (2019). Most recently, Jack received the American Association of Community Theatre Award for Scenic Design of the Decade for THE DROWSY CHAPERONE (2018). He would like to thank his friends and family for all of their continued love and support, especially his husband, Terry.



## **THEATRE MEMPHIS EXECUTIVE COMMITTEE**

PRESIDENT .....	Jim Brigrance	BUSINESS ADVISOR .....	Gene B. Cochran
VICE-PRESIDENT .....	Eric Eurich	IMMEDIATE PAST PRESIDENT .....	Dabney Coors
VICE-PRESIDENT .....	Joe Lackie	PAST PRESIDENT ADVISOR .....	Jerry Marshall
VICE-PRESIDENT .....	Jared Thomas Johnson	PAST PRESIDENT ADVISOR .....	Sarah Norton
SECRETARY .....	Linda Harris	PAST PRESIDENT ADVISOR .....	Seldon Murray
TREASURER .....	Bryan Ford	EXECUTIVE COMMITTEE EMERITUS...	Kitty Cannon

### **BOARD OF DIRECTORS**

Dr. Anita Arnold	Janice Hall	Lynn McDonald	Walker Sims
Sally Baker	Pamela Hauber	Elizabeth Ann Menke-	Jaclyn Suffel
Pat Beech	Dr. Shawn Hayden	Jumet	Deborah Dunklin Tipton
Katie Cole	Karen Johnston	Kim Mullins	Rev. Dr. Niambi Webster
Elizabeth Coors	Jude Knight	Richard Myers	Josh Whitehead
Dr. Lee Faulkner	Janette Krauch	Dr. Keith Norman	Barbara Williamson
Betha Gill	Susan Labovitz	Elizabeth Perkins	
Lee Gilliland	Meghan Lewis	Jim Renfrow	
Heather Grosvenor	Mark Luttrell	Mark Ruleman	

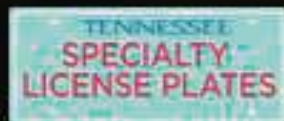
### **ACTIVE PAST PRESIDENTS**

Bert Barnett	James A. Frommel	Seldon Murray
Dan Conaway	Randall Hartzog	Sarah Norton
Gene B. Cochran	Jerry Marshall	Scott Pioreck

### **STAGE SET ELECTED GOVERNING BOARD**

President .....	Annelle Roachell	Treasurer .....	Pat Winburne
First Vice-President .....	Vicki Walling	Assistant Treasurer .....	Sandy Chandler
Second Vice-President .....	Jo Hume	Recording Secretary .....	Sandra Ashley
Third Vice-President .....	Marge Palazzolo	Corresponding Secretary .....	Janice Oliver

# SUPPORT THE ARTS WITH AN ARTS PLATE



[tnspecialtyplates.org](http://tnspecialtyplates.org)

## THEATRE MEMPHIS FRONT OF HOUSE STAFF

### House Managers

Claudia Bacigalupo, Sue Binnie,  
Tiffany Crawford, Daniel Myers

### Bartenders

Tamika Burris, Marc Holder,  
Catherine Lucchesi, Daniel Myers, Claire  
Rutkauskas, Julianne Schmidt

### Security

Daniel Myers

### Ushers

Domenic-Michael Andolina,  
Anita Angelacci, Martha Angelo,  
Ronald Archambault, Tisha Bland,  
Abigail Carter, Sandra Chandler,  
Monica Christian, Lee Clarke,  
Frances Coard, Michael Conner,  
Ken Cross, Nancy Cross, Jane Curtis,  
Richard Davenport, Helen Davis,  
Madison Davis, Russell Day,  
Sharon Day, RoseMaria DiLullo-Norman,  
Cheri Dodd, Jeanne Ellett, David Fabian,  
Frances Fabian, Jon Fabian, Linda Forbess,  
Annie Freres, Juan Gonzalez, Amy Hale,  
Greg Hale, Logan Hale, Daniel Harris,

Maryann Hendricks, Robert Henegar,  
Dawnell Hindelang, Sherry Hinton,  
Tenitia Hobson, Stormy Dawn Jackson,  
Treena Jackson, Henrietta Jones,  
Erika Kim, Karen Kroner, Barbara Layman,  
Linder Lemmons, Kathy Lewis,  
Denise Little, Kathy Lovett, Michael Lubiani,  
Carlton Malone, Jr., Jamie Mann,  
Lisa Matlock, Rick Mayfield, Teresa McCall,  
Jean McElrath, Lisa McFarland,  
Zoe McMullen, Arjun Menon, Chris Miller,  
Lynette Miller, Regina Morton,  
Daniel Myers, Jasmine Nguyen,  
Jonathan Nguyen, Thomas Nguyen,  
Lisa Parr, Theo Payton, Jeremy Phillips,  
Maurie Phillips, Sylvia Poll, Barbara Rea,  
Kertese Richard, Tamiko Rhodes,  
Adam Sanders, Martha Sanders, Beverly  
Seaton, Deborah Sharp, Heather Smith,  
Linda Soresi, Harper Steinmetz,  
Jennifer Steinmetz, Robert Sutton,  
Tommy Thompson, Shirley Toler,  
Renee Topham, Rocky Turnage, Ann Wieties,  
Linda Weiss, Holly Yancy, Alice Zalon



**Comfort Keepers.**  
Elevating the Human Spirit™

**Helping seniors when they need it most.**

☎ (901) 207-8209    🌐 [comfortkeepers.com/memphishomecare](http://comfortkeepers.com/memphishomecare)

# Dinstuhl's

**Fine Candies Since 1902**

Laurelwood • Germantown  
Pleasant View • Collierville  
Downtown

**[www.dinstuhls.com](http://www.dinstuhls.com)**



COMPUTER  
HARDWARE  
SERVICES

*For all your computer,  
hardware and software needs.*

- On site service and repair available
- Cabling of your home or business for phone and network (BICSI and RCDD)
- Offsite backup
- Check us out online at [www.computerhardwareservices.com](http://www.computerhardwareservices.com)

662-404-6177

**Season Presenting Sponsor for the 2021-22 Season**



**FIRST  
HORIZON<sup>SM</sup>  
FOUNDATION**

---

**ArtsFIRST**

---

Art lifts our spirits and expands our horizons. Because art plays a vital role in a healthy community, expressing the diversity within our common humanity, the First Horizon Foundation is a long-time supporter. As one of our signature investments, ArtsFirst is a program to promote excellence and enrichment in the arts in Memphis. This new approach allows us to partner with ArtsMemphis in the grant-making area while ensuring a continued significant impact in the community.

**THANK YOU FIRST HORIZON FOUNDATION/ARTSFIRST FOR  
TRUSTING THEATRE MEMPHIS AND RECOGNIZING THE IMPORTANT  
ROLE THEATRE MEMPHIS PLAYS IN THE COMMUNITY**

# *Theatre Memphis Applauds Our Contributing Members*

Theatre Memphis gratefully acknowledges the generosity of the individuals, corporations, and foundations that have invested in our theatre. You are the reason we have enjoyed a rich 100-year history as one of the most acclaimed community theatres in the nation, and we are most grateful for you.

Ticket sales do not cover the full costs of our productions and programs. Your contributions through Production Sponsorships, Center Stage Society, Line Producers, and Contributing Subscribers make it possible to present productions of the highest quality. Annual contributions and support will ensure our future.

Please accept our sincerest appreciation for your outstanding support. If we have made an error or if we have not listed your name or company as you wish it to appear, please call Kaitlin at 682.8601.

## **Life Members**

Gene & Sara Cochran  
Robert M. Jennings  
Joan Lohrey  
Janie McCrary  
Peggy Seessel  
André Bruce Ward

## **Producers**

Dr. Anita Arnold  
Bert & Carol Barnett  
Gary Beard  
Charles & Pat Beech  
Jim & Linda Brigrance  
Walter R. Brown  
Kitty Cannon & Jim Waller  
Mr. & Mrs. George E. Cates  
James & Jean Chang  
Katie & Keith Cole  
Foy Coolidge  
Bryan & Tracey Ford  
Kim & Mabry Ford  
Dr. Tom Fortner  
Robert Gilbert  
Jerrold & Martha Graber  
John & Janice Hall  
Ashley Harris  
Pamela Hauber  
Shawn Hayden  
Annette & Jerry Hosier  
James Humphreys  
Dorothy O. Kirsch  
Janette & Bobby Krauch  
Louise Levin  
Dr. Mel & Debbie Litch  
Julia Manning  
Jerry & Elizabeth Marshall  
Ron Martin & Curtis Jones  
Lynn McDonald  
Rona Mogil & Douglas Green  
Joyce Mollerup  
Seldon & Carolyn Murray  
Richard & Margaret Myers  
Dennis & Sarah Norton  
Scott & Sherry Pioreck  
Dr. Thomas W. Ratliff  
Cathy & Harold Richardson  
Bill Short  
Shannon Sparks  
Richard Tanner

Asan G. Tejwani  
Bobby & Nancy Walton  
Carroll White & Anne Piper-White  
Josh Whitehead

## **Stars**

David L. Allen  
Dr. Phillip & Mrs. Carol Aronoff  
Mr. & Mrs. Stanley Bilsky  
Matthew & Sara Clark  
Amanda Cook  
Kim Deneka  
Michael & Tricia DeShazo  
James & Sonia DiLorio  
Fragar Law Firm, P.C.  
Barry & Lihan Frager  
David Freeman  
Krista & David Jones  
Kimbrough B. Mullins  
Cynthia Nash & Angela Cabrera  
Robin & Jeff Pohlman  
Tracie Powers  
Missy Reeder  
Randa Rosenblum  
Cynthia & Marco Ross  
Mark Ruleman  
Edward Sharp  
Gail Smothers  
Melinda Sobanski  
Bennett Wood  
Winston Wolfe

## **Leading Players**

Bill & Susan Andrews  
Dr. Ben L. Beatus, Jr.  
Mr. & Mrs. Clifford Bird  
James Brignole  
Lucas Christian  
Jackson & Parker Duckworth  
Diana & Mickey Foster  
Ray & Bertha Gill  
Matt Grimes  
Mary Gurley  
David & Pamela Hallin  
Gina Hanissian  
Linda Harris  
Linda Harris  
Danna Holmes  
Grace Howell  
Joyce Howell

Steve & Charlotte Icardi  
William & Barbara Johns  
Charles Judge  
Kennison Kyle  
Dr. Robert & Lola Llewellyn  
Fred Nowak  
Sheppie Quinn  
Harry & Flora Samuels  
Ron & Linda Sklar  
Charles & Mary Stewart  
Alagiri Swamy  
Betsy Tedder  
Ellen Watson  
Billie Anne Williams  
Gail & Page Williamson

## **Supporting Players**

Breen Bland & Jean Mercer  
Mary Bowen  
Wallace & Olivia Bruce  
Bob & Beverly Buchalter  
Paula K. Church  
Nora & Dan Conaway  
Kim Constantinides  
Bill & Luci Cromer  
Eric & Cindy Eurich  
Carol Geller  
Nancy & Art Graesser  
Mimi Grossman  
Pamela Guasco  
Sara Heckle & Buddy Nix  
Mr. & Mrs. James B. Jalenak  
Dr. & Mrs. Myron Lewis  
Jim & Joanne Lippy  
May Lynn Mansbach  
Andrew J. Morgret  
B.C. Patterson  
Ann Powell  
Kathy Riley  
Margaret Roch  
Rebecca Rogers  
Dr. & Mrs. Robert Serino  
Donna & James Skees  
Lee Vieron  
Michael & Marcia Ann Weiss







**TODD & CO**  
Estate Sales  
901-238-6806



**Proud to help Theatre Memphis shine on for another 100 years**



Renaissance Group  
architecture • engineering • planning • interiors  
[www.rgroup.biz](http://www.rgroup.biz)  
901-332-5533







SUSTAINING OUR WORLD-RENOWNED CULTURAL VITALITY



EMPOWERING AND INVESTING IN NEW FORMS OF EXPRESSION



STRENGTHENING AND BUILDING UP OUR COMMUNITY THROUGH ARTS

[ARTMEMPHIS.ORG](http://ARTMEMPHIS.ORG)

ArtsMemphis®



# Achieve More.



- PERSONAL effectiveness
- TEAM performance
- CORPORATE results

**Focalpoint**  
Coaching & Training Excellence

**AWARD-WINNING BUSINESS COACH**

**Eric B. Eurich**

Certified Coach/Trainer

**901.340.9558**

[ericeurich.com](http://ericeurich.com)

[LIBRO]  
AT LAURELWOOD



387 Perkins Extended  
[LibroLaurelwood.com](http://LibroLaurelwood.com)  
901.800.2656



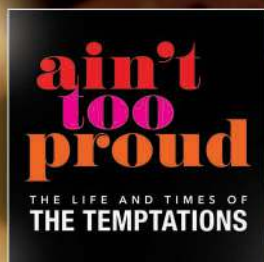
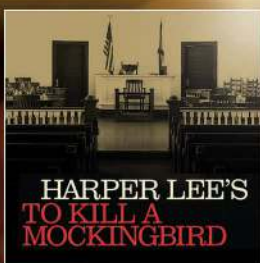
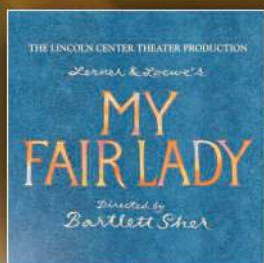
**A perfect fit.**

**RB**  
RUSSELL BROTHERS  
FINE JEWELERS

4646 Poplar Avenue, Suite 109, Memphis, TN 38117 • 901.682.5471



Powerful **STORIES**. Powerhouse **PERFORMANCES**.



2022-2023  
**BROADWAY SEASON**

SPONSORED BY



SEASON TICKETS ON SALE AT **ORPHEUM-MEMPHIS.COM**





# PLAYHOUSE ON THE SQUARE

FOR TICKETS: [WWW.PLAYHOUSEONTHE SQUARE.ORG](http://WWW.PLAYHOUSEONTHE SQUARE.ORG) - BOX OFFICE: (901) 726-4656

## FALL 2021

*IVANKA VS. REALITY* (JULY 9 - JULY 25)

*DAYS OF RAGE* (AUGUST 20 - SEPTEMBER 19)

*THE LIFESPAN OF A FACT* (SEPTEMBER 17 - OCTOBER 10)

*LITTLE SHOP OF HORRORS* (NOVEMBER 12 - DECEMBER 22)

*THE TOYMAKERS APPRENTICE* (NOVEMBER 19 - DECEMBER 22)

*TO ALL A GOOD NIGHT* (NOVEMBER 26 - DECEMBER 22)

## WINTER 2022

*THE GOODBYE LEVEE* (JANUARY 14 - JANUARY 30)

*MAY WE ALL* (JANUARY 21 - FEBRUARY 20)

*TORCH SONG* (JANUARY 28 - FEBRUARY 13)

UNIFIED PROFESSIONAL THEATRE AUDITIONS (FEBRUARY 4 - 7)

SEASON 54 REVEAL & OPEN HOUSE (MARCH)

## SPRING 2022

*A DOLL'S HOUSE* (MARCH 18 - APRIL 10)

*A DOLL'S HOUSE: PART TWO* (MARCH 18 - APRIL 10)

44TH ANNUAL ORIGINAL ART AUCTION (APRIL 23)

## SUMMER 2022

*SMOKEY JOE'S CAFE* (APRIL 29 - MAY 29)

*MISSISSIPPI GODDAMN* (MAY 13 - JUNE 5)

*A CLOSER WALK WITH PATSY CLINE* (JUNE 17 - JULY 17)

PLAYHOUSE ON  
THE SQUARE

THE CIRCUIT  
PLAYHOUSE

THEATREWORKS  
@ THE SQUARE

> > BOX OFFICE: (901) 726-4656 < <  
[WWW.PLAYHOUSEONTHE SQUARE.ORG](http://WWW.PLAYHOUSEONTHE SQUARE.ORG)



Your seats are saved for the return of live theatre!  
» » SEASON SUBSCRIPTIONS ON SALE NOW < <

**Building is  
our foundation.**

PROUD TO HAVE BUILT THIS BEAUTIFUL  
NEW ADDITION TO THEATRE MEMPHIS

**GTG** GRINDER  
TABER  
GRINDER



COMMERCIAL CONSTRUCTION CONTRACTORS

GRINDERTABER.COM | 901.767.2400

**PAULSEN**  
PRINTING COMPANY



BRINGING **COLOR** TO **LIFE**  
**901-363-5988**

**Thank You  
For Eating  
Local**



**901.667.8677  
WE CATER  
ALL  
OCCASIONS**



# EMBASSY APARTMENTS

Luxury and Location



**Offering one, two, and  
three bedrooms**

For more information

**901.685.8020**

**Utilities Included**

See our floorplans @  
[embassyaptsmemphis.com](http://embassyaptsmemphis.com)

**505 South Perkins Rd.  
In the Heart of East  
Memphis**

[www.embassyaptsmemphis.com](http://www.embassyaptsmemphis.com)



# Welcome Home

Discover how a change in address can change your life.



Our design. Your style.



- All levels of healthcare on site
- Casual and fine dining venues
- Cocktail lounge with indoor and outdoor seating
- Maintenance-free living
- Rare spacious floor plans currently available

We invite you to call today to schedule your private tour and start experiencing life at The Village.

GERMANTOWN'S ONLY CONTINUING-CARE RETIREMENT COMMUNITY

7820 Walking Horse Circle, Germantown, TN 38138  
901-737-4242 | [village-germantown.com](http://village-germantown.com)



THE VILLAGE  
— at Germantown —  
A METHODIST HEALTHCARE AFFILIATE