

ARSENIC & OLD LACE



THEATRE MEMPHIS presents "ARSENIC & OLD LACE"
By JOSEPH KESSELRING • Director JOHN MANESS
Sponsored By COMFORT KEEPERS

OCT14-30

Generous support provided by



WKNO • FM
ArtsMemphis®



Memphis Flyer
THE JENIAM
FOUNDATION



Comfort
Keepers.



THEATRE MEMPHIS in the **LOHREY THEATRE**



TICKETS 901.682.8323 ONLINE theatrememphis.org

© 2022



THEY AREN'T LITTLE FOR A LIFETIME.

But while they are, our early education programs at Westminster prepare them for the future.

Little ones are growing intellectually, physically, emotionally, and spiritually, so the care your children receive when they are young is vital to their later success. At Westminster, our small class sizes, gifted teachers, and emphasis on exploration uniquely address all of the areas required for your young learner to grow into a learner for a lifetime.

THE EDUCATION FOR A LIFETIME

JK-12 | Classical | Christian | Independent
901.380.9192 | wamemphis.com

Vol. CX, No. 2
2022-2023
October 14-30, 2022

AFFILIATIONS

American Association of Community Theatres
ArtsMemphis
Southeastern Theatre Conference
Tennessee Arts Commission
Tennessee Theatre Association

THEATRE MEMPHIS STAFF

Debbie Litch, *Executive Producer*

Administrative Staff

Lisa Hall-Hayes, *Operations Manager*
Randall Hartzog, *Director of Marketing/Communications*
Kaitlin Brucker, *Office Manager/Usher Coordinator*
Lisa Chang, *Finance Manager*
Christina Hendricks, *Senior Box Office Assistant*
Emily Greene, *Box Office Assistant*
Catherine Lucchesi, *Box Office Assistant*
Sharri Reid, *Box Office Assistant*
Claudia Bacigalupo, *House Manager*
Tamika Burris, *House Manager*
Tiffany Crawford, *House Manager/Security*
Daniel Myers, *House Manager/Security*
Chelsea Robinson, *House Manager/Box Office Assistant*
Johnny Gaither, *Building & Grounds*

Production Staff

Michael Compton, *Production Manager/Technical Director*
Ashley J. Nickas, *Director of Stage Management/Volunteers*
Gary Beard, *Music Consultant*
Amie Eoff, *Resident Costume Designer*
Jack Netzel-Yates, *Resident Scenic Designer/Properties Master*
Nicole Northington, *Resident Lighting Designer*
Jason Eschhofen, *Resident Sound Designer*
Ashley Selberg, *Costume Shop Manager*
Maggie Jackson, *Assistant Technical Director*

Department of Outreach and Education

Becky Caspersen, *Outreach/Education Director*
Keia Johnson, *Teaching Artist*
Chelsea Robinson, *Teaching Artist*

Box Office: 901.682.8323
Advertising: 901.682.0264
www.theatrememphis.org

ArtsMemphis®



M THEATRE MEMPHIS
Always Entertaining

2022-2023

UofM Theatre & Dance **SEASON**

Aloha, Say the Pretty Girls

A Comedy

Naomi Iizuka

Sept. 14 – 17

Carnival Vitas:

Dance of the Animals

In collaboration with Off the Walls Arts

Sept. 29 – Oct. 1

The Rocky Horror Show

A Gothic Sci-Fi Musical

Book, Music and Lyrics by Richard O'Brien

Nov. 10 – 19

The Faust Project

Reading of A New Adaptation

Nov. 20

Starting Here, Starting Now

A Musical Revue

Lyrics by Richard Maltby, JR Music by David Shire

Feb. 8 – 11

Emerge

New Student Dance Works

March 24 – 25

Sense and Sensibility

A Dramatic Comedy

by Kate Hamill

April 13 – 22

For event information go to
memphis.edu/theatre

NEW BALLET'S

20TH ANNIVERSARY PRESENTED BY



NUT REMIX

AT THE CANNON CENTER FOR THE PERFORMING ARTS

featuring THE MEMPHIS SYMPHONY ORCHESTRA & BIG BAND

NOVEMBER 26 & 27



ArtsMemphis



NEWBALLET.ORG



PURCHASE TICKETS AT ***ticketmaster.com***

temperature, inc.

congratulates

THEATRE MEMPHIS

on 101 years of entertaining the community!

Proudly Serving the Mid-South since 1969!

A/C and Heating Installation & Service
Computer Room A/C Installation & Service
Controls
Energy Management
Building Management
Utility Savings
Building Access Systems
Rental Chillers and Cooling Units
Chiller Conversions

Chiller Replacements
Hepa and Pleated Filters
Refrigration
Piping and Process Piping
Gas Piping
Used Equipment
Facilities Management
Ventilation
HVAC Maintenance Contracts

**7500 Appling Center Drive
Memphis, TN 38133
Office 901.388.4706
Fax 901.388.9797**

Next at Theatre Memphis

In the Next Stage:

Immediate Family

Written by Paul Oakley Stovall
Sponsored by Marjorie Palazzolo
Directed by Thomas L. King
November 4 – 19, 2022

Spunky and Bold. In the Bryant family's Hyde Park home, keeping a secret is next to impossible. When the entire clan comes together for the first time in more than five years, family secrets are exposed in a hilarious, emotional family reunion. Evy can't understand why her younger brothers are so mysterious and distant; Jesse is afraid to be true to himself and honest with his family; and no one can understand why Tony is so eager to get married. Comedy meets chaos.

Adult: \$25

Member/Senior/Military: \$20

*Student: \$15

In the Lohrey Theatre:

A Christmas Carol

Based on the novel by Charles Dickens
Presented by AutoZone
Directed and Choreographed by Jordan Nichols and Travis Bradley
Music Direction by Jeffery Brewer
December 2 – 23, 2022

A Memphis Family Holiday Tradition. Miserly Ebenezer Scrooge is approached by the ghostly vision of his former business partner, Jacob Marley, who warns him of an upcoming spiritual journey. An eye-opening exploration leads to happiness and enlightenment, not to mention song, dance, and holiday cheer.

***A Christmas Carol** is not part of the season membership, but all season members get a discount on adult full price tickets.

Adult: \$35

Member/Senior/Military: \$30

*Student: \$15

All tickets for A Christmas Carol go on sale October 18, 2022.

*Student tickets are available to those 18 and under as well as college students with a valid ID.

**Call the Box Office at 901.682.8323 for reservations
or order tickets online at www.theatrememphis.org**

NYC. Hassle-free.



One contact. One price. One good time. See New York City with the freedom of knowing your hotel, travel and transportation to and from the airport are all taken care of (tips included). ***And best of all, you choose the dates you want to go.***

Coordinated by former speech and drama teacher at Harding Academy, Dr. Bill Srygley personalizes your travel arrangements so you can concentrate on what to do in NYC and not how to get there or where to stay.

\$1600 per person, based on two person per room capacity
(as low as \$1300 per person based on four person per room capacity)

- Includes four nights at a Times Square Hotel
- Round trip airfare
- Transportation to and from the airport (tips included)

For more information contact Dr. Bill Srygley at williamleake40@outlook.com

A Little Bit about the Play

ARSENIC AND OLD LACE is a farcical black comedy revolving around the Brewster family, descended from the Mayflower settlers but now composed of maniacs, most of them homicidal. The hero, Mortimer Brewster, is a drama critic who must deal with his crazy, murderous family and local police in Brooklyn, New York, as he debates whether to go through with his recent promise to marry the woman he loves, Elaine Harper, who lives next door and is the daughter of the local minister.

When the playwright Joseph Kesselring taught at Bethel College in North Newton, Kansas, he lived in a boarding house called the Goerz House, and many of the features of its living room are reflected in the Brewster sisters' living room, where the action of ARSENIC AND OLD LACE is set. The Goerz House is now the home of the college president.

The "murderous old lady" plot line may also have been inspired by actual events that occurred in a house on Prospect St in Windsor, Connecticut, where a woman, Amy Archer-Gilligan, took in boarders, promising "lifetime care," and poisoned them for their pensions. M. William Phelps book THE DEVIL'S ROOMING HOUSE (2010) tells the story of the police officers and reporters from the Hartford Courant who solved the case. Kesselring originally conceived the play as a heavy drama, but it is widely believed that producers Howard Lindsay and Russel Crouse (who were also well known as play doctors) convinced Kesselring that it would be much more effective as a comedy. According to The Encyclopedia of American Humorists, Lindsay and Crouse gave the play its title by adapting the title of a Frank Sullivan humor collection called BROCCOLI AND OLD LACE.

The film adaptation follows the same basic plot, with a few minor changes, and the contract with the play's producers stipulated that the film would not be released until the Broadway run ended. The original planned release date was September 30, 1942. The play was a tremendous hit, running for three and a half years, so the film was not released until 1944.

From the Executive Producer...



As Theatre Memphis embraced an exciting start to our 101st season with our opening musical GUYS AND DOLLS and Shakespeare's MUCH ADO ABOUT NOTHING, we are so pleased to produce the classic comedy, ARSENIC AND OLD LACE. The first time that Theatre Memphis presented this comedy favorite was in 1942, three years after it was written and one year after it opened on Broadway in 1941. It was one of the most popular plays on Broadway of the 1940's and still is widely produced!! I know you will enjoy!

There are two very important and heartfelt words that I can never say enough and those words are THANK YOU! Thank YOU for your incredible support and attendance during our 100th anniversary season's outstanding productions. And, it seemed that the Memphis Ostrander Theatre Award judges liked what we presented as well. We are most grateful that the Ostranders' recognized Theatre Memphis with 28 out of 31 awards including Best Musical – URINETOWN and Best Play – AMERICAN SON. All of our TM production designers were awarded Best of Show in their categories which included Jack Netzel-Yates, resident scenic designer; Amie Eoff, resident costume designer; Mandy Heath, former resident lighting designer; Ashley Selberg, costume shop supervisor and designer, and Jason Eschhofen, resident sound designer. And our Production Manager, Michael Compton, received the much deserved special Janie McCrary "Putting It Together" award. While we are most appreciative of the awards committee's recognition of our outstanding directors, actors, music directors, choreographers, designers and overall productions, our continued goal is to produce each show with the highest production and performance values that we possibly can and never take anything for granted so that our audiences will continue to come and enjoy wonderful theatre for and by our Memphis community.

Our 45th annual production of A CHRISTMAS CAROL will run from December 2 – 23, 2022. We are absolutely delighted that we can produce this Memphis holiday favorite and tradition live and in person on our Lohrey Stage. Tickets go on sale on October 18, 2022, so get your tickets early by calling our box office at 901.682.8323.

There are many exciting opportunities and programs happening with our Outreach and Education department. Under the direction of Becky Caspersen, we are elated about our new Theatre Memphis Tech Academy program. This is a program to help introduce and train high school students from Memphis and Shelby County who are interested in learning and begin training in the technical aspects of theatre. We will also be presenting our SONDHEIM Petite Cabaret in January 2023 as well as our MARY POPPINS, JR. summer workshop, camp and performances in July 2023. Stay tuned for more exciting announcements surrounding our Outreach and Education endeavors.

Enjoy this wonderful, comedy performance by this amazingly talented directing and design team and cast!! And again---

My continued heartfelt thanks,

Debbie

THEATRE MEMPHIS

Presents

ARSENIC & OLD LACE

By **Joseph Kesselring**
Directed by **John Maness**

Lighting Design
Nicole Northington

Costume Design
Amie Eoff

Scenic & Properties Design
Jack Netzel-Yates

Sound Design
Jason Eschhofen

Make Up Design
Ellen Ring

Stage Manager
Katie Ogden

Assistant Director
Kevar Maffitt

Production Manager/Technical Director *Director of Stage Management & Volunteers*
Michael Compton **Ashley J. Nickas**

Season Presenting Sponsor: **First Horizon Foundation**

Show Sponsor: **Comfort Keepers**

Media Sponsors: **WKNO 91.1 FM** and *Memphis Flyer*

Arsenic and Old Lace is presented by special arrangement with Broadway Licensing, LLC, servicing the Dramatists Play Service collection. (www.dramatists.com)

Poster/Cover Created by Missy McClendon
Production Photos by Carla McDonald

The taking of photographs and the videotaping or other video or audio recording of this production is strictly prohibited. Your cooperation is appreciated. Wheelchair accessible restrooms are located off the north and south lobbies. Hearing reinforced headsets are available at the Box Office. Please ask the House Manager or an Usher for assistance.

Cast of Characters

<i>Mortimer Brewster</i>	Kinon Keplinger
<i>Martha Brewster</i>	Martha Jones
<i>Teddy Brewster</i>	Jimbo Lattimore
<i>Jonathan Brewster</i>	Kevar Maffitt
<i>Dr. Einstein</i>	Franklin Koch
<i>Abby Brewster</i>	Jeanna Juleson
<i>Elaine Harper</i>	Lena Wallace Black
<i>The Reverend Dr. Harper</i>	Jeff Kirwan
<i>Officer Brophy</i>	Jasen Durrence
<i>Officer Klein</i>	Burton Bridges
<i>Officer O'Hara</i>	Hugh Raup
<i>Mr. Gibbs</i>	Ron Kwoka
<i>Lieutenant Rooney</i>	John Reynolds
<i>Mr. Witherspoon</i>	Matthew Hamner

SYNOPSIS OF SCENES

The entire action of the play takes place in the living room
of the Brewster home in Brooklyn.

Time: the present.

ACT I

An afternoon in September.

ACT II

The same night.

ACT III

Scene 1: Later that night.

Scene 2: Early the next morning.

*A very special thank you to Judith Cardoso, Gigi Caspersen, Olivia "Via" Caspersen,
Olivia Mittag, Trish Sorce, Kaylee Webb, Lucca White*

Theatre Memphis has received special funding from the TN Nonprofit Arts & Culture
Recovery Fund. Several of our projects are being supported, in whole or in part, by
federal award number SLFRP5534 awarded to the State of Tennessee by the U.S.
Department of the Treasury.

Theatre Memphis is grateful for this outstanding aforementioned grant
administered by the Tennessee Arts Commission.



Lena Wallace Black



Burton Bridges



Jasen Durrence



Matthew Hamner



Martha Jones



Jeanna Juleson



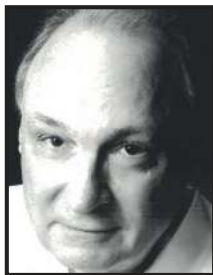
Kinon Keplinger



Jeff Kirwan



Franklin Koch



Ron Kwoka



Jimbo Lattimore



Kevlar Maffitt



Hugh Raup



John Reynolds



John Maness
Director

Who's Who

Lena Wallace Black (Elaine Harper) is an award-winning actress with a BFA in Theatre from the University of Memphis. Her most recent TM credits include *THE SECRET GARDEN*, *LITTLE WOMEN*, *STAGE KISS*, *THE 39 STEPS*, *HAY FEVER*, and *HARVEY*. Lena has wanted to do this show ever since her grandmother, Blanche Tosh, played Martha in TM's last production in 1996.

Burton Bridges (Officer Klein) is thrilled to return to Theatre Memphis since appearing in *THE MAN WHO CAME TO DINNER*. Previous stage credits include *Playhouse on the Square's LAUGHTER ON THE 23RD FLOOR*, *THE MATCHMAKER*, and *JUNK*, as well as various productions at TheatreWorks. Burton is also a board and company member of Friends of George's where he was last seen in *DRAGNIFICENT*.

Jasen Durrence (Officer Brophy) is excited to be working with the Theatre Memphis team again after his debut performance in the 2019 production of *A FEW GOOD MEN*. Offstage, Jasen is proud to serve as an Assistant County Attorney in the Shelby County Attorney's Office. Jasen also enjoys competing in triathlons, playing with his dog Belle, and any/all Memphis Tigers sports.

Matthew Hamner (Mr. Witherspoon) is pleased to be returning to Theatre Memphis. Past productions at TM include *DANGEROUS LIAISONS*, *DEATH OF A SALESMAN*, *SIDESHOW*, *AUGUST: OSAGE COUNTY*, and *A FEW GOOD MEN*. Matthew is a professor at Christian Brothers University and hopes everyone enjoys the play.

Martha Jones (Martha Brewster) is blessed to be returning to the stage at Theatre Memphis as a part of this timeless classic. She is particularly excited to be working with John Maness (Director) and Kevan Maffitt (Assistant Director) for the first time. She has admired their onstage work for years and is thrilled to be working with them "up close and personal." She feels so privileged to be working with this stellar cast and, of course, with the incredibly talented staff and crew at TM. Martha holds a Master's degree in Theatre and is a retired school teacher. She was the drama teacher at Colonial Middle School for a number of years. She now spends her time hiking, performing various grandmother duties, fostering dogs, and participating in this amazing theatre community in Memphis whenever she can. She is forever grateful to Jerry Chipman. Isaiah 40:31

Jeanna Juleson (Abby Brewster) is excited to be back after playing in last season's *RAGTIME* Ensemble with our Director and Assistant Director, and the evil Mrs. Medlock on the Next Stage in *THE SECRET GARDEN*. She has been performing on Memphis stages since arriving here in 1985 from her hometown, Los Angeles. Some favorite roles include Grandma in *BILLY ELLIOT THE MUSICAL*, Hannah and other characters in *ANGELS IN AMERICA*, Frau Schneider in *CABARET*, Reverend Mother in *SISTER ACT*, Mrs. Tottendale in *THE DROWSY CHAPERONE*, and Violet in *9 TO 5*. Jeanna wishes to thank her beautiful mother and dear friends who support her passion for theatre and offer their unconditional love.

Who's Who

Kinon Keplinger (Mortimer Brewster) has enjoyed every minute of working on this show with his fellow cast of perfectly sane, thrilling, and exciting people. This rollercoaster ride of riveting talent can only be matched by the casts of a few other shows he has been in, namely, AMERICAN SON, A FEW GOOD MEN, THE MAN WHO CAME TO DINNER, THE 39 STEPS, THE SUBMISSION, FRANKENSTEIN, WESTWORLD, BREAKING BAD, TOP GUN: MAVERICK, and ELVIS. However, none of those other cast members poisoned anyone (that he knows of), so he may have to give this analysis some thoughtful re-consideration. He is a little jealous that his aunts have stolen his dining room wallpaper, but at the same time, absolutely respects them to the hilt for it. "Well done, Aunties! Here's to wishing a delightful season of All Hallow's Eve to all!"

Jeff Kirwan (The Reverend Dr. Harper) is a Memphis area actor/director who is thrilled to join this enormously talented cast and crew. Jeff would like to thank his wife, Kelly, and his daughter, Bri, for giving him the space and support to do this crazy thing he loves.

Franklin Koch (Dr. Einstein) is not a real doctor, but is thrilled to be playing someone playing one on stage! He was last seen at Theatre Memphis as Ed Carmichael in YOU CAN'T TAKE IT WITH YOU and as Big Jule in GUYS AND DOLLS. Franklin is a graduate student in Speech Language Pathology at the University of Memphis, and would love to show you some photos of his two charming and attractive cats.

Ron Kwoka (Mr. Gibbs) is a retired lawyer and grandfather thrilled to return to the Lohrey Theatre. In his seventh year on the Board of Playhouse on the Square, Ron previously appeared as Lodovico in OTHELLO, as Danforth in THE CRUCIBLE, and as Harking and the Schoolmaster in Theatre Memphis' 2021 production of A CHRISTMAS CAROL. Ron is excited to continue his theatrical education by working under the direction of John Maness and by observing the skills of the other talented actors in the ARSENIC AND OLD LACE cast.

Jimbo Lattimore (Teddy Brewster) After taking off 30+ years from acting, Jimbo returned to the stage in 2017. Since then, he has been making up for lost time. He has been nominated for Ostrander Awards for his portrayals of Banjo in THE MAN WHO CAME TO DINNER (TM) and Vice Principal Douglas Panch in THE 25TH ANNUAL PUTNAM COUNTY SPELLING BEE (TM). Other favorite roles include Ben Franklin in 1776 (TM) and Charlie Baker in THE FOREIGNER (Harrell). Most recently, he made his regional debut as Lord Clapham in SOMETHING ROTTEN! (POTS). All the love in the world to his wife, Susan, and to his son, Jay, for getting him back on stage again. "Big thanks to John 'Field Peas' Maness!!" More at www.jimbolattimore.com.

Kevar Maffitt (Assistant Director, Fight Captain, Jonathan Brewster) is a graduate of William Carey University where he received a BA in Theatre and minored in music with a focus in voice under Connie Roberts. He was last seen on the Theatre Memphis stage in RAGTIME (Father) and prior to that, in the Playhouse on the Square production of TORCH SONG (Arnold). Kevar has also appeared in AN ACT OF GOD (God) and SHREK THE MUSICAL (Lord Farquaad) at Theatre Memphis, as well as the Germantown Community Theatre production of THE GLASS MENAGERIE (Tom), and the regional premier of YANKEL

Who's Who

BOILA (Rita) at the Nantucket Theatrical Film and Nacho Festival. Kevar is thrilled to be working both on stage and behind the director's table under the incomparable John "Field Peas" Maness and is incredibly proud of this wonderfully talented cast. "If you're still reading this, here's a little kitchen tip: If that loaf of fresh bread on your counter has gotten old and hard, quickly rinse it under the faucet, throw it in a 350-degree oven, and bake it for 10-15 minutes. Voila! Good as new! Now, grab the butter and salt and go to town!!!"

John Maness (Director) has been a regional actor and director for the last 30 years. He was most recently seen as Tateh in *RAGTIME*, William Shakespeare in *SOMETHING ROTTEN!*, John Adams in *1776*, and Col. Jessep in *A FEW GOOD MEN*. John holds a BFA in Theatre Performance from the University of Memphis and an MFA in Directing from Indiana University. He was the Company Manager for the American Shakespeare Center in Staunton, Virginia where he directed and performed in many of their shows, including *SAINT JOAN*, *THE COMEDY OF ERRORS*, and *THE ROARING GIRL*. Regionally, he has performed as Orsino in *TWELFTH NIGHT*, Demetrius in *A MIDSUMMER NIGHT'S DREAM*, Iago in *OTHELLO*, Master Ford in *THE MERRY WIVES OF WINDSOR*, and the Chorus in *HENRY V*. Other favorite roles include *A STEADY RAIN* (Joe) and *THE GLASS MENAGERIE* (Tom), as well as the eponymous roles in *HAMLET*, *AMADEUS*, and *HEDWIG AND THE ANGRY INCH*.

Katie Ogden (Stage Manager) is thrilled to be back stage managing in the Lohrey Theatre with this amazing cast. Last season at Theatre Memphis, she stage managed *URINETOWN THE MUSICAL* and *YOU CAN'T TAKE IT WITH YOU*. When she isn't at Theatre Memphis, Katie can be found at GCT as one of their newest board members and a stage manager. She will be stage managing GCT's upcoming productions of *PETER AND THE STARCATCHER* and *SPAMALOT*. "Cheers to everybody continuing to pursue and bring theatre and the arts into their communities."

Hugh Raup (Officer O'Hara) is excited to make his Theatre Memphis mainstage debut. Previous credits include directing *A CHRISTMAS CAROL* at Theatre Memphis, *24 HOUR PLAYS: MEMPHIS*, and *THE CRUCIBLE*, *TWELFTH NIGHT*, and *AROUND THE WORLD IN 80 DAYS* with National Players Tour 70. Hugh received a BA in Theatre: Performance from American University in 2018. "Much love to Jamie, Greg, Laurie, and Mickey."

John Reynolds (Lieutenant Rooney) is thrilled and humbled to be a part of another outstanding cast and crew at TM. "Thank goodness we are back from the pandemic break. Katie Ogden is Boss!"

ARSENIC AND OLD LACE CREW

Stage Manager

Katie Ogden

Fight Captain

Kevar Maffitt

Costume Construction

Cathy Bascom, Dawn Bennett,
Ann Bock, Connie Douglass,
Georgia Fortune, Julia Horne, Pam
Johnson, Olivia Mittag, Kaylee Webb,
Allison White

Lighting Crew

Austin DeVine, Jimbo Lattimore,
Nina Mahintorabi, Nathan Wilson

Set & Properties Construction

Michael Compton, Jason Eschhofen,
David Horne, Maggie Jackson,
Martha Jones, Mark Kimberling,

Doug Laurie, Jack Netzel-Yates,
Nicole Northington, Gracen Rawlinson,
Rylee Riegel, Chelsea Robinson,
Kaylee Webb

Stage Crew

Chelsea Robinson

Additional Crew

Melissa Andrews, Bryan Benjamin,
Kelly DeVine, Mason DeVine,
Nelson Meredith, Jeffrey Posson,
Lucca White

Auditions

David Allen, Christina Hendricks,
Amy Mulroy, Jeffrey Posson,
Cathy Richardson



**We have some
of the finest
selections of wine
and spirits in the
MidSouth.**

**Conveniently located
close to Theatre Memphis.**

4734 Spottswood / 901.761.1662




VENICE
KITCHEN


Venice-Kitchen.com
368 Perkins Ext.
(901)767-6872

Proud Partners with Theatre Memphis



Smoke on the Mountain: September 9-22

An Inspector Calls: October 21-November 6

Peter and the Starcatcher: December 9-18

Wit: January 20-February 5

Monty Python's Spamalot: March 3-19

I Love You, You're Perfect, Now Change:
April 14-30

Pride and Prejudice: May 26-June 11



Germantown Community Theatre
3037 Forest Hill Irene Rd.
Germantown, TN
901.453.7447
www.gctcomeplay.org



Welcome Home

Discover how a change in address can change your life.



Our design. Your style.



- All levels of healthcare on site
- Casual and fine dining venues
- Cocktail lounge with indoor and outdoor seating
- Maintenance-free living
- Rare spacious floor plans currently available

We invite you to call today to schedule your private tour and start experiencing life at The Village.

GERMANTOWN'S ONLY CONTINUING-CARE RETIREMENT COMMUNITY

7820 Walking Horse Circle, Germantown, TN 38138
901-737-4242 | village-germantown.com



THE VILLAGE
— at Germantown —
A METHODIST HEALTHCARE AFFILIATE



BABCOCK GIFTS

4538 Poplar Ave. • Laurelwood Shopping Center • Memphis, TN 38117 • 901-763-0700



Is Proud To Print the Banners & Lobby Posters
used by *Theatre Memphis*

Order Online at www.MemphisBanner.com
or call us at **901-759-0932** for your printing needs

High Quality Banners without the High Quality Price

CONGRATULATIONS TO OUR 21-22 *OSTRANDER MEMPHIS THEATRE AWARDS* WINNERS.

URINETOWN: THE MUSICAL

SCENIC DESIGN FOR A MUSICAL – JACK NETZEL-YATES
PROPS DESIGN FOR A MUSICAL – JACK NETZEL-YATES
LIGHTING DESIGN FOR A MUSICAL – MANDY KAY HEATH
FEATURED PERFORMER IN A MUSICAL – ATAM WOODRUFF
LEADING ACTOR IN A MUSICAL – BRUCE HUFFMAN
SUPPORTING ACTRESS IN A MUSICAL – CASSIE THOMPSON
ENSEMBLE IN A MUSICAL
SOUND DESIGN FOR A MUSICAL – JASON ESCHHOFFEN
DIRECTION OF A MUSICAL – ANN MARIE HALL
BEST PRODUCTION OF A MUSICAL

RAGTIME

SUPPORTING ACTOR IN A MUSICAL – JD WILLIS
LEADING ACTRESS IN A MUSICAL – LAUREN DUCKWORTH
COSTUME DESIGN FOR A MUSICAL – AMIE EOFF
HAIR/WIG/MAKEUP DESIGN FOR A MUSICAL – AMIE EOFF
MUSIC DIRECTION FOR A MUSICAL – JEFF BREWER

SPECIAL AWARD: JANIE MCCRARY "PUTTING IT TOGETHER" AWARD – MICHAEL COMPTON

AMERICAN SON

LIGHTING DESIGN FOR A PLAY – MANDY KAY HEATH
SUPPORTING ACTOR IN A PLAY – MARCUS COX
LEADING ACTRESS IN A PLAY – JESSICA "JAI" JOHNSON
ENSEMBLE IN A PLAY
DIRECTION OF A PLAY – JARED THOMAS JOHNSON
BEST PRODUCTION OF A PLAY

THE SECRET GARDEN

SCENIC DESIGN FOR A PLAY – JACK NETZEL-YATES
COSTUME DESIGN FOR A PLAY – ASHLEY SELBERG
HAIR/WIG/MAKEUP DESIGN FOR A PLAY – ASHLEY SELBERG
YOU CAN'T TAKE IT WITH YOU

PROPS DESIGN FOR A PLAY – JACK NETZEL-YATES
FEATURED PERFORMER IN A PLAY – SUSAN BRINDLEY

CICADA

SUPPORTING ACTRESS IN A PLAY – CECELIA WINGATE,
SOUND DESIGN FOR A PLAY – DAVID NEWSOME



Whitehorn
Tankersley &
Davis, PLLC

CERTIFIED PUBLIC ACCOUNTANTS

670 OAKLEAF OFFICE LANE / MEMPHIS, TENNESSEE 38117-4811 / (901) 767-5080 / (901) 767-5263 FAX

Proudly supporting
the Arts in Memphis



2022-2023 Sponsors

Presenting Season Sponsor

First Horizon Foundation/ArtsFirst

Season Sponsors

ArtsMemphis
Tennessee Arts Commission

Production Sponsors and Center Stage Society

AutoZone through Arts Memphis	Juve Salon Spa
Bert and Carol Barnett	Dorothy O. Kirsch
Belz Foundation through ArtsMemphis	Dr. Mel and Debbie Litch
Dr. Jeff Brewer	Jerry and Elizabeth Marshall
Gene and Sandra Cochran	The Mid-South Grain Inspection Service
Comfort Keepers	Menke Family Foundation
Creative Aging of the MidSouth	Marjorie Palazzolo
FedEx through ArtsMemphis	Dr. Thomas Ratliff
First Horizon Foundation	John and Anne Robilio
through ArtsMemphis	Edward Sharp and Charles Sharp
Dr. Tom Fortner	Stage Set
Grizzlies Charitable Foundation	Todd & Co. Estate Sales, Todd Stricklin
International Paper	World Cataract Foundation
Jones Bros. Tree and Landscape, a Davey Company	

The Gene and Sandra Cochran Legacy Society

Anonymous	Steve and Angela Good
David and Sarah Allen	Edwin Harris
Bert and Carol Barnett	Dr. Mel and Debbie Litch
Richard Briscoe	Dr. Michael and Shirley Lupfer
Jerry Chipman	David Lusk and Carissa Hussong
Gene and Sandra Cochran	Jerry and Elizabeth Marshall
Keith and Katie Cole	Fred and Pam Montesi
Dabney Coors	Seldon and Carolyn Murray
Bryan and Tracey Zerwig Ford	Walter R. Smith
Charles and Catherine Freeburg	Asan G. Tejwani

THEATRE MEMPHIS ARTISTIC STAFF

Michael Compton (Production Manager/Technical Director) This is Mr. Compton's 19th season as Production Manager for TM. He earned his BS in Technical Theatre from Illinois State University and was previously the Technical Director for the Players Theatre in Sarasota, FL. Ostrander Awards include lighting design for THOROUGHLY MODERN MILLIE and the Behind the Scenes Award for the 2006-2007 season.

Amie Eoff (Resident Costume Designer) is pleased to be the Resident Costume Designer at TM. From 2012-2014, she served as the Costume Shop Supervisor at Rhodes College, and in 2012, she completed her fourth season as the Resident Costume Designer for Circuit Playhouse. During her career, Amie has been nominated for several Ostrander Awards for Best Costumes and won for PRESENT LAUGHTER; BLOODY, BLOODY, ANDREW JACKSON; THE PRODUCERS; 1776; SHREK THE MUSICAL; SIDE SHOW; CATS; and RAGTIME. She holds an MFA in Costume Design from the University of Southern Mississippi. She has also worked on cruise ships with Jean Ann Ryan Productions and has designed for the Hangar Theatre in New York.

Jason Eschhofen (Resident Sound Designer) is very excited to be a part of the Theatre Memphis family! He has a BA in Voice Performance and Studio Recording Technology from Bowling Green State University and an MM in Voice Performance from the University of Memphis. Since graduating, Jason taught at the University of Memphis and was a freelance music director, actor, sound designer, and synth programmer before signing on as the Resident Sound Designer for Playhouse on the Square and now with Theatre Memphis. Some of his favorite credits include THE SECRET GARDEN (Theatre Memphis, sound design); THE 25TH ANNUAL PUTNAM COUNTY SPELLING BEE (Theatre Memphis, music direction); RUTHLESS! THE MUSICAL (Theatre Memphis, music direction); DAYS OF RAGE (Playhouse on the Square, sound design); MURDER FOR TWO (Playhouse on the Square, Marcus Moscovitz, co-music direction, sound design/recording/engineering); and THE FANTASTICKS (The Link Theatre, music direction). Additionally, Jason has been the Music Director for the High School Musical Theatre Awards at the Orpheum since 2017 and the Music Director for the Ostrander Awards at the Orpheum since 2019. He has won Ostrander Awards for Best Musical Direction (NINE, University of Memphis), Best Sound Design (URINETOWN THE MUSICAL, Theatre Memphis), and the Larry Riley Rising Star award.

Maggie Jackson (Assistant Technical Director) is excited to be joining Theatre Memphis for its 101st season. After the honor of being Stage Manager for RAGTIME, she is thrilled to continue her work with this wonderful community as the Assistant Technical Director. She would like to thank the TM staff, directors, and the cast and crew for the opportunity to be a part of such an amazing production and season. Lastly, she would like to thank her family and friends for all their love and support.

Ashley J. Nickas (Director of Stage Management and Volunteers) is thrilled to be rejoining the Theatre Memphis family after five years in NYC. During her time there, she gained stage management experience on Broadway, Off-Broadway, tour, and regional theatres. Some of her favorite credits include WE ARE THE TIGERS (Off-Broadway), SECRET COMEDY OF WOMEN (Tour), and interning with WICKED (Broadway).

Nicole Northington (Resident Lighting Designer) is excited to join Theatre Memphis for her first season as the Resident Lighting Designer. She began participating in technical theater as a freshman in high school and went on to receive her BA in Dramatic Arts in 2019 from Trevecca Nazarene University in Nashville, Tennessee. During her time in Nashville, she worked with many organizations including Nashville Children's Theatre, TPAC, Nashville Opera, and more. After graduating she moved to Memphis in August of 2019 to complete three seasons at the Circuit Playhouse. Some of her favorite designs include TORCH SONG, SONGS FOR A NEW WORLD, THE GOODBYE LEVEE, and NAT TURNER IN JERUSALEM.

Ashley Selberg (Costume Shop Manager) was born and raised just outside Memphis, Tennessee. She attended the O'More College of Design in Franklin, Tennessee, where she received a BFA in Fashion Design. While in college, she realized she enjoyed designing costumes, so she set out for the theatre world. She interned at Nashville Repertory Theatre and fell in love. After graduating, she became a costume technician for Ballet Memphis under head designer Bruce Bui. Since then, she has worked for many other theatres and even film production companies on shows like "Bluff City Law" and "Women of the Movement". In her spare time, she creates costumes of all kinds for Cosplay and Renaissance faires. Her works have been recognized in Memphis' Art at the Airport in 2009, the Congressional Art Competition of 2007, the Eloise O'More Fashion Show in 2013, MTAC Cosplay Best of Show Contest 2018, and Anime Blues Con 8 Cosplay Contest. "Costuming is my passion; there is just something magical about helping an actor, dancer, or everyday person feel special by creating the perfect costume that brings everything together."

Jack Netzel-Yates (Resident Scenic Designer/Properties Master) received his BFA in Theatrical Design and Production from Oklahoma City University in 2010. Now entering his tenth year with TM, he has previously worked for venues such as The Kalamazoo Civic Theatre, Light Opera Oklahoma, Oklahoma Shakespeare in the Park, City Rep., Ballet Memphis, and Tennessee Shakespeare Company. Jack has designed over 67 productions for TM, received 49 Ostrander Award nominations, and won Best Scenic Design for his work on THE HEIRESS (2014), THE PRODUCERS (2015), BEAUTY AND THE BEAST (2016), HAIRSPRAY (2018), CATS (2019), THE SECRET GARDEN (2021), and URINETOWN THE MUSICAL (2021). Most recently, Jack received the American Association of Community Theatre Award for Scenic Design of the Decade for THE DROWSY CHAPERONE (2018). He would like to thank his friends and family for all of their continued love and support, especially his husband, Terry.

THEATRE MEMPHIS EXECUTIVE COMMITTEE

PRESIDENT	Jim Brigance	BUSINESS ADVISOR	Gene B. Cochran
VICE-PRESIDENT	Eric Eurich	IMMEDIATE PAST PRESIDENT	Dabney Coors
VICE-PRESIDENT	Joe Lackie	PAST PRESIDENT ADVISOR	Jerry Marshall
VICE-PRESIDENT	Jared Thomas Johnson	PAST PRESIDENT ADVISOR	Sarah Norton
SECRETARY	Janice Hall	PAST PRESIDENT ADVISOR	Seldon Murray
TREASURER	Bryan Ford	EXECUTIVE COMMITTEE EMERITUS...	Kitty Cannon

BOARD OF DIRECTORS

Dr. Anita Arnold	Karen Johnston	Kim Mullins	Rev. Dr. Niambi Webster
Sally Baker	Jude Knight	Richard Myers	Josh Whitehead
Pat Beech	Janette Krauch	Dr. Keith Norman	
Katie Cole	Susan Labovitz	Elizabeth Perkins	
Betha Gill	Meghan Lewis	Jim Renfrow	
Heather Grosvenor	Mark Luttrell	Mark Ruleman	
Janice Hall	Lynn McDonald	Walker Sims	
Pamela Hauber	Elizabeth Ann	Jaclyn Suffel	
Dr. Shawn Hayden	Menke-Jumet	Deborah Dunklin Tipton	

ACTIVE PAST PRESIDENTS

Bert Barnett	James A. Frommel	Seldon Murray
Dan Conaway	Randall Hartzog	Sarah Norton
Gene B. Cochran	Jerry Marshall	Scott Pioreck

STAGE SET ELECTED GOVERNING BOARD

President	Annelle Roachell	Treasurer	Pat Winburne
First Vice-President	Vicki Walling	Assistant Treasurer	Sandy Chandler
Second Vice-President	Jo Hume	Recording Secretary	Sandra Ashley
Third Vice-President	Marge Palazzolo	Corresponding Secretary	Janice Oliver

SUPPORT THE ARTS WITH AN ARTS PLATE



tnspecialtyplates.org

THEATRE MEMPHIS FRONT OF HOUSE STAFF

House Managers

Claudia Bacigalupo, Tamika Burris, Tiffany Crawford, Daniel Myers, Chelsea Robinson

Bartenders

Tamika Burris, Marc Holder, Catherine Lucchesi, Daniel Myers, Julianne Schmidt

Security

Tiffany Crawford, Daniel Myers

Ushers

Domenic-Michael Andolina, Anita Angelacci, Martha Angelo, Saralynn Archibald, Valerie Augustus, Catherine Austin, Jason Ball, Sue Binnie, Andy Blankenship, Sandra Chandler, Monica Christian, Lee Clarke, Frances Coard, Judy Coburn, Betty Curley, Jane Curtis, Anamika Datta, Richard Davenport, Helen Davis, Russell Day, Sharon Day, RoseMaria DiLullo-Norman, Jeanne Ellett, David Fabian, Frances Fabian, Jon Fabian, Linda Forbess, Amy Hale, James Hall,

Mary Hamm, Daniel Harris, Christina Hendricks, Maryann Hendricks, Robert Henegar, Dawnell Hindelang, Sherry Hinton, Henrietta Jones, Shannon Jongema, Barbara Layman, David Leadbetter, Linder Lemmons, Kathy Lewis, Kathy Lovett, Michael Lubiani, Pratik Mamtora, Lisa Matlock, Teresa McCall, Mary Lou McCaslin, Jean McElrath, Lisa McFarland, Chris Miller, Lynette Miller, Regina Morton, Lisa Parr, Adrian Rayo, Barbara Rea, Amy Rush, Adam Sanders, Martha Sanders, Julie Scarpace, Lucca Scarpace, Todd Scarpace, Heather Smith, Mackenzie Smith, Sabrina Spence, Sabrina Stokes, Robert Sutton, Charlotte Tedder, Shirley Toler, Annette Vescovo-Lawrence, Ann Wieties, Jennifer Wilkinson, Linda Weiss, Alice Zalon



Elevating the
Human Spirit™

In-Home Care to Help Seniors Thrive

Our empathetic, in-home care helps seniors thrive while living independently. Whether your loved one needs medication reminders, transportation to appointments, or personal care, Comfort Keepers is here to provide support and build meaningful relationships.

In-Home Care Services

- Personal care
- Companionship and housekeeping
- Dementia and Alzheimer's care
- Respite care
- Safety solutions

901-207-8209

Home + Life + Care | [ComfortKeepers.com](https://www.comfortkeepers.com)

Comfort Keepers of the Mid-South, 5668 S Rex Rd #200, Memphis, Tennessee 38119

© 2022 CK Franchising, Inc. An international network where most offices are independently owned and operated.



COMPUTER
HARDWARE
SERVICES

*For all your computer,
hardware and software needs.*

- On site service and repair available
- Cabling of your home or business for phone and network (BICSI and RCDD)
- Offsite backup
- Check us out online at www.computerhardwareservices.com

662-404-6177

SWEET NOTES



Dinstuhl's

Fine Candies Since 1902

MEMPHIS, TN | 800.355.0358 | DINSTUHL.COM

MEMPHIS
436 GROVE PARK

GERMANTOWN
7730 POPLAR AVE

MEMPHIS
5280 PLEASANT VIEW RD

COLLIERVILLE
231 NEW BYHALIA RD

Season Presenting Sponsor for the 2022-23 Season



ArtsFIRST

Art lifts our spirits and expands our horizons. Because art plays a vital role in a healthy community, expressing the diversity within our common humanity, the First Horizon Foundation is a long-time supporter. As one of our signature investments, ArtsFirst is a program to promote excellence and enrichment in the arts in Memphis. This new approach allows us to partner with ArtsMemphis in the grant-making area while ensuring a continued significant impact in the community.

**THANK YOU FIRST HORIZON FOUNDATION/ARTSFIRST FOR
TRUSTING THEATRE MEMPHIS AND RECOGNIZING THE IMPORTANT
ROLE THEATRE MEMPHIS PLAYS IN THE COMMUNITY**

Theatre Memphis Applauds Our Contributing Members

Theatre Memphis gratefully acknowledges the generosity of the individuals, corporations, and foundations that have invested in our theatre. You are the reason we have enjoyed a rich 100-year history as one of the most acclaimed community theatres in the nation, and we are most grateful for you.

Ticket sales do not cover the full costs of our productions and programs. Your contributions through Production Sponsorships, Center Stage Society, Line Producers, and Contributing Subscribers make it possible to present productions of the highest quality. Annual contributions and support will ensure our future.

Please accept our sincerest appreciation for your outstanding support. If we have made an error or if we have not listed your name or company as you wish it to appear, please call Kaitlin at 901-682-8601.

Life Members

Gene & Sandra Cochran
Janie McCrary

Producers

Dr. Anita Arnold
Bert & Carol Barnett
Gary Beard
Pat & Charles Beech
Jim & Linda Brigrance
Kitty Cannon & Jim Waller
Mr. & Mrs. George E. Cates
Katie & Keith Cole
Foy Coolidge
Bryan & Tracey Ford
Kim & Mabry Ford
Dr. Tom Fortner
Robert Gilbert
Martha & Jerrold Graber
John & Janice Hall
Pamela Hauber
Shawn Hayden & Connor Parris
James R. Humphreys
Jared Thomas Johnson
Dorothy O. Kirsch
Jude Knight
Janette "JJ" & Bobby Krauch
Ronald Kwoka
Louise Levin
Dr. Mel & Debbie Litch
Ron Martin
Lynn McDonald
Rona Mogil & Douglas Green
Seldon & Carolyn Murray
Richard & Margaret Myers
Dennis & Sarah Norton
Sheppie T. Quinn
Bill Short
Cathy & Harold Richardson
Shannon Sparks
Richard Tanner
Asan G. Tejwani
Bobby & Nancy Walton
Carroll White & Anne Piper-White
Josh Whitehead
Camilla Wilson

Stars

David L. Allen
Dr. Phillip & Mrs. Carol Aronoff
Mr. & Mrs. Stanley Bilsky
Jerry & Marjorie Bowman
Dr. & Mrs. David Deneka
Michael & Tricia DeShazo
Barry and Lihan Frager
Frager Law Firm, P.C.
David Freeman
Diana Jones
Majestic Wine & Liquor
Scott & Carol Mednikow
Dr. Brent & Kimbrough Mullins
Cynthia Nash & Angela Cabrera
Jim & Betsy Pentecost
Jeff & Robin Pohlman
Missy Reeder
Randa Rosenblum
Cynthia & Marco Ross
Bennett Wood

Leading Players

Bill & Susan Andrews
Clifford & Olive Bird
Mary Bowen
Andy Burkeen
Matthew & Sara Clark
Jim & Pat Corbitt
Robert Dumaïs
Michael Fannon
Diana & Mickey Foster
Tim & Kristi Francavilla
Ray & Betha Gill
Howard Glatstein
Carol Greenwald
John & Judy Griesbeck
David & Pamela Hallin
Alvin Harris
Linda Harris
Joyce Howell
Jerry Huff
William & Barbara Johns
Kennison Kyle
James & Susan Lattimore
Lola & Bob Llewellyn
Jeff & Andrea McLeod
Rodgers Menzies

Randy Moss
Amanda Prislovsky
Harry & Flora Samuels
Gus Schroeder
William & Courtney Segal
Ron & Linda Sklar
Charles & Mary Stewart
Ellen I. Watson
Kathy Wexler
Billie Anne Williams
Cindy Williams

Supporting Players

Breen Bland & Jeannie Mercer
Karen Bowyer
Bob & Beverly Buchalter
Nora & Dan Conaway
Kim Constantinides
Bill & Luci Cromer
Josie Elosua
Eric & Cindy Eurich
Cecil Fox
Carol Geller
Nancy & Art Graesser
Pamela Guasco
Natalie & Jimmy Jalenak
Shawn King
Christiana & Joe Leibovich
Gail Lewis
May Lynn Mansbach
Andrew J. Morgret
J.J. Murphy
Carl Panetta
Ann L. Powell
Candi Schoenberger
Robert Serino
Mel & Donna Skees
Missy & Joe Skinner
Betsy Tedder
Michael & Marcia Ann Weiss
Robert Wilson

Memphis' Finest Estate Sales



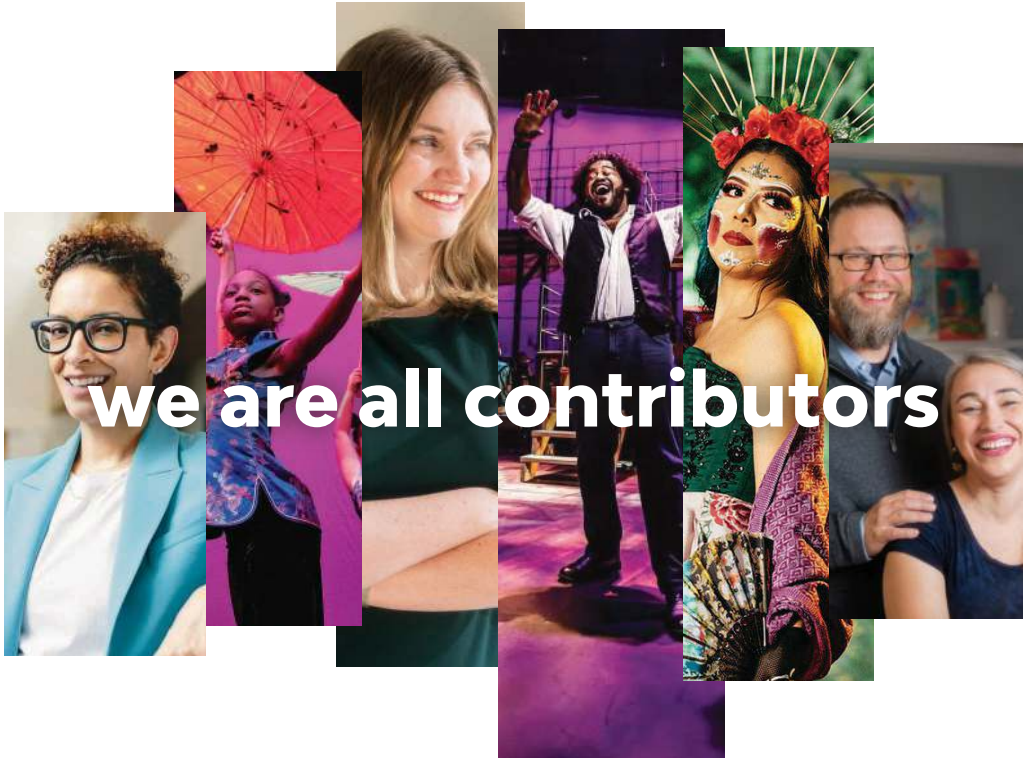
TODD&CO
estate sales
901-238-6806



An AutoZoner Always...
Cares About People

Proud to Support Theatre Memphis

©2021 AutoZone, Inc. All Rights Reserved. AutoZone and AutoZone & Design are registered marks of AutoZone IP LLC or one of its affiliates. All other marks are property of their respective owners.



we are all contributors

ArtsMemphis®

Proud to have granted \$3.1 million to 67 arts organizations and hundreds of individual artists this past fiscal year through strategic partnerships and new avenues to support people, programs, and operations.

ArtsMemphis is expanding the foundation of the arts to strengthen our community.

Whether a patron, artist, stagehand, educator, or donor, together, we are all contributors to the **arts**.

Join us
artsmemphis.org



Prepare Yourself.



- EXIT strategy
- SUCCESSION planning
- PERSONAL effectiveness

FocalPoint
Coaching & Training Excellence

AWARD-WINNING BUSINESS COACH

Eric B. Eurich

Certified Coach/Trainer

901.340.9558

ericeurich.com

[LIBRO]
AT LAURELWOOD



387 Perkins Extended
LibroLaurelwood.com
901.800.2656

Custom Monograms

*Belt buckles, Pendants,
Earrings, Bracelets & Money clips.
Available in sterling or gold.*



RB
SINCE 1910
RUSSELL BROTHERS
FINE JEWELERS

Allow two weeks for delivery.

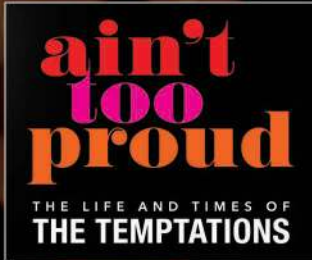
4646 Poplar Avenue, Suite 109, Memphis, TN 38117 • 901.682.5471



NOVEMBER 29-DECEMBER 4



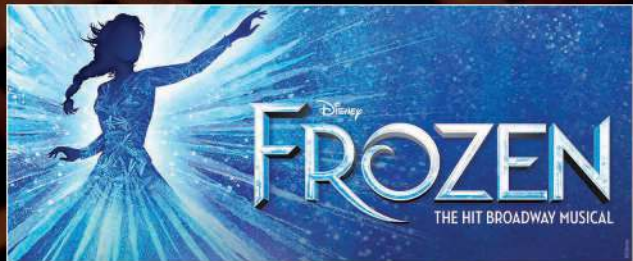
FEBRUARY 14-19



MARCH 7-12



APRIL 4-9



JUNE 22-JULY 2

2022-2023 BROADWAY SEASON

SPONSORED BY

Memphis Area
Honda Dealers



TRUIST

PICK 4 OR MORE SHOWS TO CREATE YOUR SEASON PACKAGE!
VISIT **ORPHEUM-MEMPHIS.COM** TODAY.

PLAYHOUSE ON THE SQUARE

THE MID-SOUTH'S PROFESSIONAL THEATRE COMPANY

66 SOUTH COOPER ST, MEMPHIS, TN, 38104

FALL 2022

SHANKTOWN (JULY 8 - JULY 24)

GREAT WINE PERFORMANCES (JULY 19)

SOMETHING ROTTEN! (AUGUST 19 - SEPTEMBER 18)

PASS OVER (SEPTEMBER 16 - OCTOBER 9)

THE WIZARD OF OZ (NOVEMBER 11 - DECEMBER 22)

JUNIE B'S ESSENTIAL SURVIVAL

GUIDE TO SCHOOL (NOVEMBER 18 - DECEMBER 22)

WHO'S HOLIDAY (NOVEMBER 25 - DECEMBER 22)

>> BOX OFFICE: (901) 726-4656 <<
VISIT US ONLINE: WWW.PLAYHOUSEONTHE SQUARE.ORG

PLAYHOUSE ON
THE SQUARE

THE CIRCUIT
PLAYHOUSE

THEATREWORKS
ON THE SQUARE

SPECIAL
EVENTS

TOURING
PRODUCTION

WINTER 2023

IF PEKIN IS A DUCK,

WHY AM I IN CHICAGO? (JANUARY 13 - JANUARY 29)

THE SCOTTSBORO BOYS (JANUARY 20 - FEBRUARY 19)

ROE (FEBRUARY 3 - FEBRUARY 19)

UNIFIED PROFESSIONAL

THEATRE AUDITIONS (FEBRUARY 3 - 6)

SPRING 2023

FRECKLEFACE STRAWBERRY

THE MUSICAL (MARCH 18 - APRIL 15)

P. NOKIO: A HIP-HOP MUSICAL

TOURING THE MID-SOUTH REGION (MARCH 21 - MAY 19)

INK (MARCH 24 - APRIL 16)

45TH ANNUAL ORIGINAL ART AUCTION (APRIL 22)

SUMMER 2023

NATASHA, PIERRE &

THE GREAT COMET OF 1812 (APRIL 28 - MAY 21)

CLYDE'S (MAY 12 - JUNE 4)

JERSEY BOYS (JUNE 16 - JULY 16)



ACKNOWLEDGMENTS

Special thanks to

HONORARIUMS

Bill Andrews from Barbara and Pitt Hyde
Allison Clark's Birthday from Gay Daughdrill Boyd
Kitty Cannon and Jim Waller from Frankie Wade
Stephanie Cheney from Carol Smith Katz
Dr. Tom Fortner from EJ Baird
Jerrold and Martha Graber's 60th Anniversary from Lynn Meyer,
Jim and Judy Lindy, Judy and Nick Ringel

MEMORIALS

Shawn Clary from Edward Sharp
Eliza Fletcher from Edward Sharp
Michael Lupfer from Susan Cohn
John Rone from Patricia Gray
Barbara Roberts Schneider from Kim Justis Eikner and Family, Stage Set
Joe Sullivan from Catrina and Peter Sullivan
Claire Thompson from Walter M. Thompson II
Eric Thompson from Walter M. Thompson II
Betty D. Friedman Tredway from Margaret Chambless and Matthew Chambless

PAULSEN
PRINTING COMPANY



BRINGING **COLOR** TO **LIFE**
901-363-5988

TOPS BAR-B-Q

MEMPHIS
Since 1952 **BEST**

Famous Smoked Ribs
Pork Shoulder
Beef Brisket
Cheeseburgers

And We Cater Too

901.667.8677

EMBASSY APARTMENTS

Luxury and Location



Offering one, two, and
three bedrooms

For more information

901.685.8020

Utilities Included

See our floorplans @
embassyaptsmemphis.com

505 South Perkins Rd.
In the Heart of East
Memphis

www.embassyaptsmemphis.com

DRAWING THE CURTAIN

10.7.22
to 1.9.23

Maurice Sendak's
Designs for Opera and Ballet

Presented by
nexAir

Sponsored by
Debi & Galen Havner



**Memphis
Brooks
Museum
of Art**

**Open in
Overton Park
brooksmuseum.org**

Sendak, Maurice. Diorama of Max's sea journey (Where the Wild Things Are), ship model. 1979-83
Credit line: The Morgan Library & Museum, Bequest of Maurice Sendak, 2013.103:58e.