



# THE PLAY THAT GOES WRONG

THEATRE MEMPHIS presents "THE PLAY THAT GOES WRONG"

By HENRY LEWIS, JONATHAN SAYER and HENRY SHIELDS

Director ANN MARIE HALL • Sponsored by TODD&CO ESTATE SALES,  
DR. THOMAS RATLIFF and DOROTHY D. KIRSCH

## MARCH 3-26

Generous support provided by



ArtsMemphis



THE JENIAM  
FOUNDATION

WKNO-FM  
MemphisFlyer



THEATRE MEMPHIS in the LOHREY THEATRE



TICKETS 901.682.8323 ONLINE [theatrememphis.org](http://theatrememphis.org)



---

## THEY AREN'T LITTLE FOR A LIFETIME.

---

But while they are, our early education programs at Westminster prepare them for the future.

Little ones are growing intellectually, physically, emotionally, and spiritually, so the care your children receive when they are young is vital to their later success. At Westminster, our small class sizes, gifted teachers, and emphasis on exploration uniquely address all of the areas required for your young learner to grow into a learner for a lifetime.

### THE EDUCATION FOR A LIFETIME

JK-12 | Classical | Christian | Independent  
901.380.9192 | [wamemphis.com](http://wamemphis.com)

**Vol. CX, No. 5**  
**2022-2023**  
**March 3-26, 2023**

#### **AFFILIATIONS**

American Association of Community Theatres  
ArtsMemphis  
Southeastern Theatre Conference  
Tennessee Arts Commission  
Tennessee Theatre Association

#### **THEATRE MEMPHIS STAFF**

Debbie Litch, *Executive Producer*

#### **Administrative Staff**

Lisa Hall-Hayes, *Operations Manager*  
Randall Hartzog, *Director of Marketing/Communications*  
Kaitlin Brucker, *Office Manager/Usher Coordinator*  
Lisa Chang, *Finance Manager*  
Christina Hendricks, *Senior Box Office Assistant*  
Emma Clark, *Box Office Assistant*  
Shannon Jongema, *Box Office Assistant*  
Sharri Reid, *Box Office Assistant*  
Molly Waugh, *Box Office Assistant*  
Claudia Bacigalupo, *House Manager/Security*  
Tamika Burris, *House Manager*  
Daniel Myers, *House Manager/Security*  
Chelsea Robinson, *House Manager/Box Office Assistant*  
Tiffany Crawford, *Security*  
Tobby Watson, *Security*  
Johnny Gaither, *Building & Grounds*

#### **Production Staff**

Michael Compton, *Production Manager/Technical Director*  
Ashley J. Nickas, *Director of Stage Management/Volunteers*  
Gary Beard, *Music Consultant*  
Amie Eoff, *Resident Costume Designer*  
Jack Netzel-Yates, *Resident Scenic Designer/Properties Master*  
Nicole Northington, *Resident Lighting Designer*  
Jason Eschhofen, *Resident Sound Designer*  
Ashley Selberg, *Costume Shop Manager*  
Maggie Jackson, *Assistant Technical Director*

#### **Department of Outreach and Education**

Becky Caspersen, *Outreach/Education Director*  
Keia Johnson, *Teaching Artist*  
Chelsea Robinson, *Teaching Artist*

**Box Office: 901.682.8323**

**Advertising: 901.682.0264**

**www.theatrememphis.org**

**ArtsMemphis®**



**M THEATRE MEMPHIS**  
*Always Entertaining*

**2022-2023**

**UofM Theatre & Dance**  
**SEASON**

**Aloha, Say the Pretty Girls**

A Comedy

Naomi Iizuka

Sept. 14 – 17

**Carnival Vitas:**

**Dance of the Animals**

In collaboration with Off the Walls Arts

Sept. 29 – Oct. 1

**The Rocky Horror Show**

A Gothic Sci-Fi Musical

Book, Music and Lyrics by Richard O'Brien

Nov. 10 – 19

**The Faust Project**

Reading of A New Adaptation

Nov. 20

**Starting Here, Starting Now**

A Musical Revue

Lyrics by Richard Maltby, JR Music by David Shire

Feb. 8 – 11

**Emerge**

New Student Dance Works

March 24 – 25

**Sense and Sensibility**

A Dramatic Comedy

by Kate Hamill

April 13 – 22

For event information go to  
**memphis.edu/theatre**





## temperature, inc.

congratulates

### THEATRE MEMPHIS

on 101 years of entertaining the community!

*Proudly Serving the Mid-South since 1969!*

A/C and Heating Installation & Service  
Computer Room A/C Installation & Service  
Controls  
Energy Management  
Building Management  
Utility Savings  
Building Access Systems  
Rental Chillers and Cooling Units  
Chiller Conversions

Chiller Replacements  
Hepa and Pleated Filters  
Refrigration  
Piping and Process Piping  
Gas Piping  
Used Equipment  
Facilities Management  
Ventilation  
HVAC Maintenance Contracts

**7500 Appling Center Drive  
Memphis, TN 38133  
Office 901.388.4706  
Fax 901.388.9797**

# Next at Theatre Memphis

## In the Next Stage:

### ***Mrs. Mannerly***

Written by Jeffrey Hatcher

Directed by Kell Christie

March 31 – April 16, 2023

**Charming and Entertaining.** Inspired by hilarious memories of a childhood etiquette class, playwright Hatcher recreates the world of a ten-year-old studying manners. Mrs. Mannerly, portrayed by Jude Knight, is a demanding teacher, and no student in her 36 years of etiquette classes has ever received a perfect score. But when he discovers her secret past, young Jeffrey is determined to be the first to achieve this feat. This unique comic tale reveals truths about the face we present and our real selves that lie inside.

Adult: \$25

Member/Senior/Military: \$20

\*Student: \$15

## In the Lohrey Theatre:

### ***Sherlock's Last Case***

Written by Charles Marowitz

Directed by Cecelia Wingate

April 21 – May 7, 2023

**Intense and Suspenseful.** Picking up where the classic stories end, this plot confronts the great detective with a unique challenge. As usual, not everything is as it appears. This modern take on the master sleuth is filled with suspense, betrayal, thrills, and witty humor, straight through to its startling conclusion. Will anyone be ready for the truths to be revealed? This is the Holmes and Watson story you never expected.

Adult: \$25

Member/Senior/Military: \$20

\*Student: \$15

\*Student tickets are available to those 18 and under as well as college students with a valid ID.

**Call the Box Office at 901.682.8323 for reservations  
or order tickets online at [www.theatrememphis.org](http://www.theatrememphis.org).**

# NYC. Hassle-free.

*One contact. One price. One good time.* See New York City with the freedom of knowing your hotel, travel, sightseeing transportation and service to and from the airport are all taken care of (tips included). *And best of all, you choose the dates you want to go.* Coordinated by former speech and drama teacher at Harding Academy, Dr. Bill Srygley personalizes your travel arrangements so you can concentrate on what to do in NYC and not how to get there or where to stay.

**\$1600 per person**, based on two person per room capacity  
(as low as \$1300 per person based on four person per room capacity)

- Includes 4 nights/5 days at a Times Square Hotel
- Round trip airfare
- 3 days full access to narrated sightseeing (jump on/jump off) buses all across NYC
- Transportation to and from the airport (tips included)

---

## *Special New York Trip Opportunity*



*Your BIG BUS experience allows you to travel to Uptown, Downtown and Crosstown. Hop on close to the hotel, hop off where you wish, shop, sightsee, dine, hop back on at your convenience with buses running continuously through the day. You choose the shows, restaurants, events and sights you want to see and travel the Big Apple in the comfort and security of the BIG BUS.*

**For more information contact Dr. Bill Srygley at [williamleake40@outlook.com](mailto:williamleake40@outlook.com)**

## *From the Executive Producer...*



THANK YOU! It brings me the greatest joy and appreciation to say thank you to YOU! You have come back after the pandemic to experience outstanding theatre at our beloved Theatre Memphis. I want to personally thank you for helping TM experience record attendance at so many of this season's productions. Your endorsement means so much.

I am most excited to announce our 2023-24 season that features a majority of Theatre Memphis premieres. Here is our outstanding season:

### **Lohrey Theatre**

- ***Sister Act, The Musical*** (Theatre Memphis premiere) Director

Ann Marie Hall, Choreographer Courtney Oliver and Music Director Jeff Brewer

- ***Blithe Spirit*** Directed by Justin Asher
- ***A Christmas Carol*** Directed by Jordan Nichols and Travis Bradley
- ***A Raisin in the Sun*** (Theatre Memphis premiere) directed by Jared Thomas Johnson
- ***Beautiful, The Carol King Musical*** (Theatre Memphis premiere). Director Cecelia Wingate, Choreographer Christi Hall and Music Director Jason Eschhofen
- ***Steel Magnolias*** Directed by Jerre Dye
- ***Rodgers & Hammerstein's Cinderella*** (Broadway version) (Theatre Memphis premiere) Directors and Choreographers Jordan Nichols and Travis Bradley, Music Director Jeff Brewer

### **Next Stage**

- ***The Crucible*** (Theatre Memphis premiere) Director John Maness
- ***Silent Sky*** (Theatre Memphis premiere) Director Cecelia Wingate
- ***The Glass Menagerie*** (Theatre Memphis premiere) Director Meghan L. Lewis
- ***Master Class*** Director Kell Christie

And this summer we will offer a special production of ***Mary Poppins, Jr.*** in July 2023 as part of our Outreach and Education summer workshop and performance series.

The TM memberships for the new 2023-24 season are on sale and include six tickets that are good for any performance in the Lohrey Theatre or The Next Stage and can be used in combination on any show, excluding ***A Christmas Carol*** which is not part of the membership package. Season members do, however, receive discounts on tickets to the holiday production and special offerings. **Regular Memberships secured prior to July 5, 2023, will receive a \$10 discount off the regular membership price of \$150 and a seventh ticket!** Please sign up at intermission or available by calling the box office at 901.682.8323.

We hope you will mark your calendars for our upcoming ***Spring Faire*** and ***Memphis Children's Theatre Festival*** special day at Theatre Memphis on **Saturday, April 29 from 10 am until 3 pm.** Spring Faire will feature artists and artisans, food trucks and concessions and outdoor performances celebrating spring. Our second annual Memphis Children's Theatre Festival will showcase youth performers and performances for youth. The MCTF and Spring Faire are free to the public with donations welcomed. Come and enjoy a great day at our beautiful Theatre Memphis!!

Enjoy and have fun with our ***The Play That Goes Wrong!!***

*Debbie*

# THEATRE MEMPHIS

Presents

# THE PLAY THAT GOES WRONG

By **Henry Lewis, Jonathan Sayer & Henry Shields**

Directed by **Ann Marie Hall**

*Lighting Design*

**Nicole Northington**

*Costume Design*

**Amie Eoff**

*Scenic & Properties Design*

**Jack Netzel-Yates**

*Sound Design*

**Jason Eschhofen**

*Stunt/Fight Coordinator*

**Courtney Oliver**

*Production Stage Manager*

**Elizabeth Shelly Perkins**

*Director of Stage Management & Volunteers*

**Ashley J. Nickas**

*Assistant Director*

**Jared Thomas Johnson**

*Special Effects Design/Production Manager/Technical Director*

**Michael Compton**

Season Presenting Sponsor: **First Horizon Foundation**

Show Sponsors: **Todd&Co Estate Sales, Dr. Thomas Ratliff and Dorothy O. Kirsch**

Media Sponsors: **WKNO 91.1 FM and Memphis Flyer**

**THE PLAY THAT GOES WRONG** was first presented by Mischief Theatre under the title **THE MURDER BEFORE CHRISTMAS** on December 4th, 2012, at the Old Red Lion Theatre in London. **THE PLAY THAT GOES WRONG** by Henry Lewis, Jonathan Sayer & Henry Shields © 2012. 2014 Mischief Worldwide Ltd. This production is presented by arrangement with Dramatists Play Service under license from Mischief Worldwide Ltd.

**Poster/Cover Created by Missy McClendon**

**Production Photos by Carla McDonald**

The taking of photographs and the videotaping or other video or audio recording of this production is strictly prohibited. Your cooperation is appreciated. Wheelchair accessible restrooms are located off the north and south lobbies. Hearing reinforced headsets are available at the Box Office. Please ask the House Manager or an Usher for assistance.



# Cast of Characters

<i>Annie</i> .....	Amy Rush
<i>Stage Crew/Swings</i> .....	Lena Wallace Black & Austin Wall
<i>Trevor</i> .....	John M. Hemphill
<i>Chris</i> .....	Kinon Keplinger
<i>Jonathan</i> .....	Hugh Boller-Raup
<i>Robert</i> .....	Kevar Maffitt
<i>Dennis</i> .....	Gabriel Kestrel
<i>Max</i> .....	Bruce Huffman
<i>Sandra</i> .....	Meghan L. Lewis
<i>Runaway Dog</i> .....	Bindi Jo Nickas

## SETTING

The action takes place on the opening night of the Cornley Drama Society's production of *THE MURDER AT HAVERSHAM MANOR* by Susie H. K. Brideswell. Present Day.

*A very special thank you to Christi Hall and Intrepid Gymnastics.*

***In loving memory of Harold Richardson  
from Malcolm and Katherine Richardson***

Theatre Memphis has received special funding  
from the TN Nonprofit Arts & Culture Recovery Fund.  
Several of our projects are being supported, in whole or in part,  
by federal award number SLFRP5534 awarded to the State of Tennessee  
by the U.S. Department of the Treasury.

Theatre Memphis is grateful for this outstanding aforementioned grant administered  
by the Tennessee Arts Commission.

# Who's Who



**Lena Wallace Black** (Stage Crew/Swing) most recently won the Behind the Scenes Award at the 2022 Ostrander Awards, so she feels extremely qualified for

her role as Stage Crew in this production! Her aim for her work behind the scenes during the performances will be to ensure that everything is in its proper place, transitions are seamless, and all cast and crew have a safe experience both on and backstage! Fingers crossed!



**Hugh Boller-Raup** (Jonathan) is thrilled to have received such a warm welcome from the Memphis theatre community after moving here from his

hometown, Washington, D.C. Hugh studied Theatre Performance at American University. Much love to his wife Jamie, dad Mickey, and two critters.



**Ann Marie Hall** (Director) recently directed *EVIL DEAD, THE MUSICAL* for New Moon at Theatre Works Overton Square, fulfilling a long-pursued dream. Now, she

has taken on *THE PLAY THAT GOES WRONG*, which she describes as *NOISES OFF* on steroids. Ms. Hall has a history of the offbeat as noted by her last musical endeavor on this stage with the multi-award-winning and aptly named *URINETOWN THE MUSICAL*. While she is the proud recipient of the Eugart Yerian Lifetime Achievement Award, she advises that she is still way too young for a lifetime just yet. Many thanks to all the staff, crew, actors, support, advisors and social therapists for everything they have done to mount this challenging but brilliant show.



**John M. Hemphill** (Trevor) A native Memphian, John is thrilled to be returning to the Theatre Memphis stage after last year's successful *MUCH ADO ABOUT NOTHING*

(Benedick). Local roles include Thurston et al in *A TUNA CHRISTMAS*; Fester in *THE ADDAMS FAMILY*; Nicely-Nicely in *GUYS & DOLLS* (Ostrander Award); Johnny in *FRANKIE AND JOHNNY IN THE CLAIR DE LUNE*; and Man 2 in *KISS ME KATE* (Ostrander Award). Much love to Beau & Bella...and to my beloved Mary - "I do love nothing in the world so well as you."



**Bruce Huffman** (Max) most recently played Ash in *EVIL DEAD: THE MUSICAL* at New Moon Theatre Company, and made his assistant directing debut working on

*GUYS AND DOLLS* at Theatre Memphis. Bruce has performed on Memphis theatre stages for 25 years, and was seen last season as Alan in *TORCH SONG* at The Circuit Playhouse, and as Bobby Strong in *URINETOWN THE MUSICAL* (2022 Ostrander Award, Leading Actor in a Musical). Other credits include Gabe in *NEXT TO NORMAL* (Ostrander nomination, Supporting Actor in a Musical); Adam/Felecia in *PRISCILLA QUEEN OF THE DESERT* (Ostrander nomination, Lead Actor in a Musical); Paul in *A CHORUS LINE*; Mark in *ALTAR BOYZ*; George in *THE DROWSY CHAPERONE*; and Edward in *BLOOD BROTHERS* (Ostrander Award, Lead Actor in a Musical). "Sending my love to Robert, Biscuit, and Jackie."



**Jared Thomas Johnson** (Assistant Director) is so excited to apprentice the masterclass of Ann Marie Hall. Jared made his directorial debut with

last season's *AMERICAN SON*. Playhouse on the Square credits: *PASSOVER*, *THE SCOTTSBORO BOYS*. Up next, Jared returns to TM to direct *A RAISIN IN THE SUN*. He thanks the cast and crew for the healing power of laughter.



**Kinon Keplinger** (Chris) has been splitting your sides with laughter for years. You may remember him as Mortimer from the smash hit *ARSENIC AND*

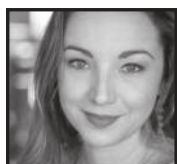
# Who's Who

OLD LACE; or Richard Hannay, the main guy in THE 39 STEPS; or Professor Plum in CLUE; or his antics as the mean (misunderstood) dad in AMERICAN SON; or the Kevin Pollack character in A FEW GOOD MEN; the jerkiest of the jurors in TWELVE ANGRY JURORS; or the neighborly neighbor in the hilarious laugh out loud comedy ALL MY SONS. No? Then perhaps as the swanky heartthrob in HAY FEVER, the offstage screaming guy in THE SUBMISSION, or the Cary Grant character in THE PHILADELPHIA STORY. Maybe as the lovable Laurie in LITTLE WOMEN? Aww, that was a good one. Umm, not as funny per se, but still side splitting (ha!) as Dr. Frankenstein in FRANKENSTEIN? OH, maybe that goofy Dr. Jekyll in JEKYLL AND HYDE?



**Gabriel Kestrel (Dennis)** is pleased to return to the stage after a three-year break. Previously surnamed Beutel-Gunn, Gabe is an award-winning actor who

was last seen on stage at Theatre Memphis in A FEW GOOD MEN. He would like to thank you for supporting your local theatre, and he hopes you enjoy the show. This performance is dedicated to Zoe Marceline.



**Meghan L. Lewis (Sandra)** is thrilled to join this incredible cast in a dream show! She hopes your sides hurt after tonight as much as hers did after she

saw this for the first time. You may have seen her before at Theatre Memphis in OUR TOWN, AUGUST: OSAGE COUNTY, THE CMPLT WRKS OF SHKSPR ABRIDGED, HEDDA GABLER, and more. Endless love and gratitude to her unbelievably supportive husband, Ronnie, who lets her disappear into worlds like this all the time. "You're my most favorite person." Much love to the Mascara Mob. Her performance tonight, and every time she's on the boards, is for her mother, who never missed a show, and never will.



**Kevan Maffitt (Robert)** is a graduate of William Carey University where he received a BA in Theatre and studied voice under Dr. Connie Roberts. He was last seen

on the TM stage in ARSENIC AND OLD LACE (Jonathan) and before that in RAGTIME (Father). Prior to that, he appeared in the Playhouse on the Square production of TORCH SONG (Arnold) at The Circuit Playhouse. He would like to thank the cast and crew of this goofball of a show. "It's always a pleasure to be on the Theatre Memphis stage with this great group of individuals. If you're still reading this, here are a couple of food facts: Avocados can stay on the tree for up to 6 months and won't ripen until they're picked. And a single mango tree can produce mangos for 300 years."



**Bindi Jo Nickas (Runaway Dog)** was last seen in GUYS AND DOLLS earlier this season. Although she is new to acting, Bindi is no stranger to TM. She is the

official Theatre Memphis theatre dog. She is usually found in her office (really Ashley J. Nickas's office) or in the Box Office searching for treats. Bindi was adopted in June 2021 from Horse Creek Wildlife Sanctuary in Savannah, TN.



**Courtney Oliver (Fight/Stunt Coordinator)** is Playhouse on the Square's Director of Auditions and Special Events, as well as a Resident Company

Member. She has been working with Ann Marie for a number of years at Theatre Memphis, collaborating on such shows as URINETOWN THE MUSICAL, SIDE SHOW, RUTHLESS! THE MUSICAL, and INTO THE WOODS. Choreography credits with Playhouse include the Ostrander Award-winning PRISCILLA QUEEN OF THE DESERT, as well as Ostrander nominated shows: SISTERS OF SWING, REEFER MADNESS, and MAN OF LA MANCHA. As an actress she was most recently seen this past holiday season as Cindy

# Who's Who

Lou Who in WHO'S HOLIDAY at The Circuit Playhouse. "Thanks always and giant love to the cast, crew, and staff of Theatre Memphis - and to Ann Marie for the last 25 years of friendship. 'I'll love you forever.' And lastly, to the audience, thank you for enjoying our ridiculousness."

**Marya Paolillo** (Stage Manager) has been volunteering with TM since 2012. This is her 13th production at TM! Lucky number 13 or is it lucky? Marya would like to thank her family & friends for always supporting her and her love of the arts.

**Elizabeth Shelly Perkins** (Production Stage Manager) is currently the Director of Enrollment and Outreach for Westminster Academy, but started her career as the Production Stage Manager at Theatre Memphis. Elizabeth serves as the Director for the Memphis Ostrander Awards (Memphis' theatre awards for collegiate, community, and professional theatre), a judge for the Orpheum's High School Musical Theatre Awards, on the Board of Directors at Theatre Memphis, and routinely leads workshops for those interested in stage management.

**Chelsea Robinson** (Stage Manager) is one of the Resident Teaching Artists at Theatre Memphis. Her recent credits at Theatre Memphis include A CHRISTMAS CAROL (Ensemble), GUYS AND DOLLS (Stage Manager), ARSENIC AND OLD LACE (Run Crew), and RAGTIME (Assistant Stage Manager). She would like to thank everyone who has made this production possible. "Enjoy the show!"



**Amy Rush** (Annie) is excited to make her Theatre Memphis debut. Memphis credits: ART (Marie) and SHOCKHEADED PETER (Ensemble) with New Moon

Theatre Company, of which she is a Board member. She earned an MA in Puppet Arts at University of Connecticut, was a resident puppeteer at the Center for Puppetry Arts in Atlanta, performed in many puppet projects while living in New York, and appeared in English language theatre while recently living in Prague. She has studied and taught improv comedy for many years and is a member of Bluff City Liars. Next up: New Moon's SMALL MOUTH SOUNDS.



**Austin Wall** (Stage Crew/Swing, Assistant Fight Coordinator) is a senior at University of Memphis and is studying to get his BFA in Performance. This is

Austin's second Theatre Memphis production with his first role being in the Ensemble of GUYS AND DOLLS at the start of the season. He is very excited to be working with this cast and crew and hopes you enjoy the production! Instagram: austin\_brick\_wall308 Facebook: Austin Wall

*Check out our  
2023-24 Season.  
Become a Member  
and \$ave.*





## ***THE PLAY THAT GOES WRONG CREW***

### **Production Stage Manager**

Elizabeth Shelly Perkins

### **Stage Managers**

Marya Paolillo, Chelsea Robinson

### **Assistant Stage Manager**

Olivia Mittag

### **Assistant Fight Coordinator**

Austin Wall

### **Costume Construction**

Cathy Bascom, Ann Bock, Connie Douglass, Julia Horne, Pam Johnson, Olivia Mittag, Kaylee Webb

### **Lighting Crew**

Austin DeVine

### **Set & Properties Construction**

Michael Compton, Jason Eschhofen, David Horne, Maggie Jackson, Mark Kimberling, Doug Laurie, Jack Netzel-Yates, Nicole Northington, Chelsea Robinson

### **Stage Crew**

Natalie Chamblin, Valerie Henley, Ben Marshall, Max McClung, Maggie Jackson, Steve Lopez

### **Auditions**

David Allen, Christina Hendricks, Amy Mulroy, Jeffrey Posson, Cathy Richardson



**We have some  
of the finest  
selections of wine  
and spirits in the  
MidSouth.**

**Conveniently located  
close to Theatre Memphis.**

**4734 Spottswood / 901.761.1662**



  
**VENICE**  
KITCHEN  


**Venice-Kitchen.com**

**368 Perkins Ext.**

**(901)767-6872**

**Proud Partners with Theatre Memphis**



Smoke on the Mountain: September 9-22

An Inspector Calls: October 21-November 6

Peter and the Starcatcher: December 9-18

Wit: January 20-February 5

Monty Python's Spamalot: March 3-19

I Love You, You're Perfect, Now Change:  
April 14-30

Pride and Prejudice: May 26-June 11



Germantown Community Theatre  
3037 Forest Hill Irene Rd.  
Germantown, TN  
901.453.7447  
[www.gctcomeplay.org](http://www.gctcomeplay.org)



# Welcome Home

Discover how a change in address can change your life.



Our design. Your style.



- All levels of healthcare on site
- Casual and fine dining venues
- Cocktail lounge with indoor and outdoor seating
- Maintenance-free living
- Rare spacious floor plans currently available

We invite you to call today to schedule your private tour and start experiencing life at The Village.

GERMANTOWN'S ONLY CONTINUING-CARE RETIREMENT COMMUNITY

7820 Walking Horse Circle, Germantown, TN 38138  
901-737-4242 | [village-germantown.com](http://village-germantown.com)



THE VILLAGE  
— at Germantown —  
A METHODIST HEALTHCARE AFFILIATE

Cornley Drama Society presents



Written by Susie H. K. Birdeswell

Directed by Chris Cumberbatch Hemsworth Bean CBE

### CAST

Charles Haversham .....	Jonathan Kes'Trelle
Thomas Colleymoore .....	Robert Grove
Perkins .....	Dennis Shedsworth
Cecil Haversham .....	Max Bennett
Florence Colleymoore .....	Sandra Wilkinson
Inspector Carter .....	Chris Bean
Arthur the Gardener .....	Max Bennett

### SETTING

The action takes place in Charles' private rooms at Haversham Manor on the evening of Charles and Florence's engagement party. Winter 1922.

### CREW

Stage Manager .....	Annie Twilloil
Stage Crew .....	Imelda Cumberbatch & Nichols Logan
Lighting & Sound Operator .....	Trevor Watson



**Annie Twilloil** (Stage Manager) has been a stage manager, a set builder, and a painter with the Drama Society for the past three years. She's most proud of designing the platform for James' peach and of the large scratching post in our most recent productions. When she's not helping out backstage, you can find her on the pitch as Assistant Captain of the Cornley Rugby Football Club.

**Imelda Cumberbatch** (Stage Crew) has never been to a proper theatrical production but was roped into being behind the scenes crew for this show by her brand-new husband, Robert. After a raucous evening at the pub, the two decided "Why not?" and traipsed off to tie the knot with the priest from 2 bar stools over. Robert insisted Imelda work crew for *THE MURDER AT HAVERSHAM MANOR* because he needed "a ride to and from the theatre every day, so you might as well stay on in between and make yourself useful."

**Nichols Logan** (Stage Crew) has been with the Cornley Society for some time now. He has been a swing for many of the society's productions and is proud of his work building the set for *THE MURDER AT HAVERSHAM MANOR*. He has truly put his heart and soul into this project and he has no other priorities than the safety of his actors. He wishes to highlight a particular passion project of his on the set, a rendering of his dog Stanley that he painted himself. He hopes you enjoy the show and come back soon!

**Trevor Watson** (Lighting and Sound Operator) is only participating in *THE MURDER AT HAVERSHAM MANOR* to earn much needed extra credit for his electronics module in order to pass his engineering course at Cornley University. Once he has passed the course, he will not continue to work with the Drama Society. Trevor credits his success to his sunny disposition and his positive outlook on life.

**Chris Cumberbatch Hemsworth Bean CBE** (Inspector Carter/Director), born 11 August 1983, in addition to his directorship of this lavish murder mystery before you, is an Australian-British actor known for his rigid work-out regimen and roles in *THOR: LOVE AND THUNDER* and *SHERLOCK*, who was named 2014 and 2018 People Magazine's Sexiest Man Alive and received Academy Award nominations for *THE IMITATION GAME* and *GHOSTBUSTERS*. Be sure to catch his next directorial effort this summer: *MISSION: IMPOSSIBLE - DEAD RECKONING PART ONE*, starring Tom Cruise.

**Jonathan Kes'Trelle** (Charles Haversham) "Hello! I am thrilled to be making my professional theatrical debut playing the titular role of The Murder Victim in *THE MURDER AT HAVERSHAM MANOR*. It has always been a dream of mine to play a dead body on

stage." Previous credits include: Spearholder #2 in my 4th grade production of *ALADDIN JR.* and the Flying Carpet in my 8th grade production of *ALADDIN*. Jonathan really hopes the Ostrander judges appreciate the hundreds of hours of research into dead bodies he did to prepare for this role. "Much love to my parents for offering me affordable rent for their basement. Lastly and most importantly, to my girlfriend who lives in Canada, I've got one important question to ask you: Baby, will you" (bio cut due to length)

**Robert Grove** (Thomas Colleymoore) is a founding member of the Cornley Polytechnic Drama Society. After a recent evening consisting of copious buttery nipple shots and increasingly daring bets, he awoke to find himself wed to one of the stage hands, Imelda. Annulment pending. Past theatrical credits include: Tuffet in *LITTLE MISS MUFFET: A HISTORICAL RAP MUSICAL*, Mean Aunt #1 in *JAMES, WHERE'S YOUR PEACH?!*, and Wolf in *THE BOY WHO CRIED WOLF 2: AGAIN WITH THIS SH\*T?!* Be on the lookout next season for the reprisal of his *ONE MAN LES MISÉRABLES* entitled: *C'EST MISÉRABLE*. "All my love and deepest apologies to Courtney."

**Dennis Shedsworth** (Perkins) is a seventh-year student at Cornley Polytechnic's College of Butlery. He is proud to follow in the footsteps of his forebears, as his father, Geoffrey, was president of the Wembley Butlerian Society. Before him, Dennis' grandfather, Nedward Shedsworth II, butled for the Baron of Biggin Hill for sixty-six years. Dennis hopes his expertise will bring a passable level of verisimilitude to this theatrical endeavor. Past credits include: accidentally wandering on stage during last year's one-man production of *THE IMPORTANCE OF BEING EARNEST*.

**Max Bennett** (Cecil Haversham/Arthur the Gardener) "Hello everyone! I'm Max!! Formally known as Maxine Finn Bennett III, and I LOVE theatre!!!!!!!!!! I have just returned from 2 two weeks of Holiday, and I am SO JAZZED to be here!! This is my first production working with Mr. Chris Bean. Wow, is he tough! Thank you to my mum for making my play outfits. I am so glad you got to see me perform *THE MURDER AT HAVERSHAM MANOR!!!!*"

**Sandra Wilkinson** (Florence Colleymoore) This is Sandra's eleventh season with the Cornley Polytechnic Drama Society. You may recognize her from her recent roles as Grizabella in *CATS*, Snow White in *SNOW WHITE AND THE TALL BROAD GENTLEMEN*, and Irina in *TWO SISTERS*. Sandra has been performing from a very young age, since her mother appeared as Mary in Cornley Anglican Church's *PASSION PLAY* pregnant.

# MATCH



BABCOCK GIFTS

4538 Poplar Ave. • Laurelwood Shopping Center • Memphis, TN 38117 • 901-763-0700



Is Proud To Print the Banners & Lobby Posters  
used by *Theatre Memphis*

Order Online at [www.MemphisBanner.com](http://www.MemphisBanner.com)  
or call us at **901-759-0932** for your printing needs

*High Quality Banners without the High Quality Price*

# **2022-2023 Sponsors**

## **Presenting Season Sponsor**

First Horizon Foundation/ArtsFirst

## **Season Sponsors**

ArtsMemphis  
Tennessee Arts Commission

## **Production Sponsors and Center Stage Society**

AutoZone through Arts Memphis	Juve Salon Spa
Bert and Carol Barnett	Dorothy O. Kirsch
Belz Foundation through ArtsMemphis	Dr. Mel and Debbie Litch
Dr. Jeff Brewer	Jerry and Elizabeth Marshall
Gene and Sandra Cochran	The Mid-South Grain Inspection Service
Comfort Keepers	Menke Family Foundation
Creative Aging of the MidSouth	Marjorie Palazzolo
FedEx through ArtsMemphis	Dr. Thomas Ratliff
First Horizon Foundation/ArtsFirst	John and Anne Robilio
through ArtsMemphis	Edward Sharp
Dr. Tom Fortner	Stage Set
Grizzlies Charitable Foundation	Todd & Co. Estate Sales, Todd Stricklin
International Paper	World Cataract Foundation
Jones Bros. Tree and Landscape, a Davey Company	

## **The Gene and Sandra Cochran Legacy Society**

Anonymous	Steve and Angela Good
David and Sarah Allen	Edwin Harris
Bert and Carol Barnett	Dr. Mel and Debbie Litch
Richard Briscoe	Dr. Michael and Shirley Lupfer
Jerry Chipman	David Lusk and Carissa Hussong
Gene and Sandra Cochran	Jerry and Elizabeth Marshall
Keith and Katie Cole	Fred and Pam Montesi
Dabney Coors	Seldon and Carolyn Murray
Bryan and Tracey Zerwig Ford	Walter R. Smith
Charles and Catherine Freeburg	Asan G. Tejwani
Robert "Bob" Gilbert	

# THEATRE MEMPHIS ARTISTIC STAFF

**Michael Compton** (Production Manager/Technical Director) This is Mr. Compton's 19th season as Production Manager for TM. He earned his BS in Technical Theatre from Illinois State University and was previously the Technical Director for the Players Theatre in Sarasota, FL. Ostrander Awards include lighting design for THOROUGHLY MODERN MILLIE, the Behind the Scenes Award for the 2006-2007 season, and the 2021 Janie McCrary Putting it Together Award.

**Amie Eoff** (Resident Costume Designer) is pleased to be the Resident Costume Designer at TM. From 2012-2014, she served as the Costume Shop Supervisor at Rhodes College, and in 2012, she completed her fourth season as the Resident Costume Designer for Circuit Playhouse. During her career, Amie has been nominated for several Ostrander Awards for Best Costumes and won for PRESENT LAUGHTER; BLOODY, BLOODY, ANDREW JACKSON; THE PRODUCERS; 1776; SHREK THE MUSICAL; SIDE SHOW; CATS; and RAGTIME. She holds an MFA in Costume Design from the University of Southern Mississippi. She has also worked on cruise ships with Jean Ann Ryan Productions and has designed for the Hangar Theatre in New York.

**Jason Eschhofen** (Resident Sound Designer) is very excited to be a part of the Theatre Memphis family! He has a BA in Voice Performance and Studio Recording Technology from Bowling Green State University and an MM in Voice Performance from the University of Memphis. Since graduating, Jason taught at the University of Memphis and was a freelance music director, actor, sound designer, and synth programmer before signing on as the Resident Sound Designer for Playhouse on the Square and now with Theatre Memphis. Some of his favorite credits include THE SECRET GARDEN (Theatre Memphis, sound design); THE 25<sup>TH</sup> ANNUAL PUTNAM COUNTY SPELLING BEE (Theatre Memphis, music direction); RUTHLESS! THE MUSICAL (Theatre Memphis, music direction); DAYS OF RAGE (Playhouse on the Square, sound design); MURDER FOR TWO (Playhouse on the Square, Marcus Moscovitz, co-music direction, sound design/recording/engineering); and THE FANTASTICKS (The Link Theatre, music direction). Additionally, Jason has been the Music Director for the High School Musical Theatre Awards at the Orpheum since 2017 and the Music Director for the Ostrander Awards at the Orpheum since 2019. He has won Ostrander Awards for Best Musical Direction (NINE, University of Memphis), Best Sound Design (URINETOWN THE MUSICAL, Theatre Memphis), and the Larry Riley Rising Star award.

**Maggie Jackson** (Assistant Technical Director) is excited to be joining Theatre Memphis for its 101st season. After the honor of being Stage Manager for RAGTIME, she is thrilled to continue her work with this wonderful community as the Assistant Technical Director. She would like to thank the TM staff, directors, and the cast and crew for the opportunity to be a part of such an amazing production and season. Lastly, she would like to thank her family and friends for all their love and support.

**Jack Netzel-Yates** (Resident Scenic Designer/Properties Master) received his BFA in Theatrical Design and Production from Oklahoma City University in 2010. Now entering his tenth year with TM, he has previously worked for venues such as The Kalamazoo Civic Theatre, Light Opera Oklahoma, Oklahoma Shakespeare in the Park, City Rep., Ballet Memphis, and Tennessee Shakespeare Company. Jack has designed over 67 productions for TM, received 49 Ostrander Award nominations, and won Best Scenic Design for his work on THE HEIRESS (2014), THE PRODUCERS (2015), BEAUTY AND THE BEAST (2016), HAIRSPRAY (2018), CATS (2019), THE SECRET GARDEN (2021), and URINETOWN THE MUSICAL (2021). Most recently, Jack received the American Association of Community Theatre Award for Scenic Design of the Decade for THE DROWSY CHAPERONE (2018). He would like to thank his friends and family for all of their continued love and support, especially his husband, Terry.

**Ashley J. Nickas** (Director of Stage Management and Volunteers) rejoined the Theatre Memphis family in 2021 after five years in NYC. Some of her favorite credits include WE ARE THE TIGERS (Off-Broadway), SECRET COMEDY OF WOMEN (Tour), and interning with WICKED (Broadway). Ashley is dedicating this show to her roommate, Nicholas Bader, who was on the stage management team of THE PLAY THAT GOES WRONG (Off-Broadway) before he passed away in 2019.

**Nicole Northington** (Resident Lighting Designer) is excited to join Theatre Memphis for her first season as the Resident Lighting Designer. She began participating in technical theatre as a freshman in high school and went on to receive her BA in Dramatic Arts in 2019 from Trevecca Nazarene University in Nashville, Tennessee. During her time in Nashville, she worked with many organizations including Nashville Children's Theatre, TPAC, Nashville Opera, and more. After graduating, she moved to Memphis in August 2019 to complete three seasons at the Circuit Playhouse. Some of her favorite designs include TORCH SONG, SONGS FOR A NEW WORLD, THE GOODBYE LEVEE, and NAT TURNER IN JERUSALEM. This and every show she does is dedicated to her late father, LJ Northington. For every day he drove her to play rehearsal to every show he saw, his support is what got her here today.

**Ashley Selberg** (Costume Shop Manager) was born and raised just outside Memphis, Tennessee. She attended the O'More College of Design in Franklin, Tennessee, where she received a BFA in Fashion Design. While in college, she realized she enjoyed designing costumes, so she set out for the theatre world. She interned at Nashville Repertory Theatre and fell in love. After graduating, she became a costume technician for Ballet Memphis under head designer Bruce Bui. Since then, she has worked for many other theatres and even film production companies on shows like "Bluff City Law" and "Women of the Movement". In her spare time, she creates costumes of all kinds for Cosplay and Renaissance faires. Her works have been recognized in Memphis' Art at the Airport in 2009, the Congressional Art Competition of 2007, the Eloise O'More Fashion Show in 2013, MTAC Cosplay Best of Show Contest 2018, and Anime Blues Con 8 Cosplay Contest. "Costuming is my passion; there is just something magical about helping an actor, dancer, or everyday person feel special by creating the perfect costume that brings everything together."



## **THEATRE MEMPHIS EXECUTIVE COMMITTEE**

PRESIDENT .....	Jim Brigance	BUSINESS ADVISOR .....	Gene B. Cochran
VICE-PRESIDENT .....	Eric Eurich	IMMEDIATE PAST PRESIDENT .....	Dabney Coors
VICE-PRESIDENT .....	Joe Lackie	PAST PRESIDENT ADVISOR .....	Jerry Marshall
VICE-PRESIDENT .....	Jared Thomas Johnson	PAST PRESIDENT ADVISOR .....	Sarah Norton
SECRETARY .....	Janice Hall	PAST PRESIDENT ADVISOR .....	Seldon Murray
TREASURER .....	Bryan Ford	EXECUTIVE COMMITTEE EMERITUS....	Kitty Cannon

### **BOARD OF DIRECTORS**

Dr. Anita Arnold	Karen Johnston	Kim Mullins	Rev. Dr. Niambi Webster
Sally Baker	Jude Knight	Richard Myers	Josh Whitehead
Pat Beech	Janette Krauch	Dr. Keith Norman	
Katie Cole	Susan Labovitz	Elizabeth Perkins	
Betha Gill	Meghan Lewis	Jim Renfrow	
Heather Grosvenor	Mark Luttrell	Mark Ruleman	
Janice Hall	Lynn McDonald	Walker Sims	
Pamela Hauber	Elizabeth Ann	Jaclyn Suffel	
Dr. Shawn Hayden	Menke-Jumet	Deborah Dunklin Tipton	

### **ACTIVE PAST PRESIDENTS**

Bert Barnett	James A. Frommel	Seldon Murray
Dan Conaway	Randall Hartzog	Sarah Norton
Gene B. Cochran	Jerry Marshall	Scott Pioreck

### **STAGE SET ELECTED GOVERNING BOARD**

President .....	Annelle Roachell	Treasurer .....	Pat Winburne
First Vice-President .....	Vicki Walling	Assistant Treasurer .....	Sandy Chandler
Second Vice-President .....	Jo Hume	Recording Secretary .....	Sandra Ashley
Third Vice-President .....	Marge Palazzolo	Corresponding Secretary .....	Janice Oliver

# SUPPORT THE ARTS WITH AN ARTS PLATE



[tnspecialtyplates.org](http://tnspecialtyplates.org)

## THEATRE MEMPHIS FRONT OF HOUSE STAFF

### House Managers

Claudia Bacigalupo, Tamika Burris, Daniel Myers, Chelsea Robinson

### Bartenders

Tamika Burris, Marc Holder, Daniel Myers, Julianne Schmidt

### Security

Claudia Bacigalupo, Tiffany Crawford, Daniel Myers, Tobby Watson

### Ushers

Domenic-Michael Andolina, Anita Angelacci, Martha Angelo, Saralynn Archibald, Valerie Augustus, Catherine Austin, Jason Ball, Sue Binnie, Andy Blankenship, Tina Bodenheimer, Marlinda Bolton, Kameron Brewer, Ashley Bugg Brown, Harper Brown, Judith Cardoso, Ressie Carr, Patty Carreras, Makayla Cash, Sandra Chandler, Monica Christian, Lee Clarke, Frances Coard, Judy Coburn, Javen Cook, Sean Cullen, Betty Curley, Jane Curtis, Anamika Datta, Richard Davenport, Helen Davis, Russell Day, Sharon Day, RoseMaria DiLullo-Norman, Jeanne Ellett, David Fabian, Frances Fabian, Jon Fabian, Linda Forbess, Brad Gabriel, Linda Gabriel, Amy Hale, James Hall, Mary Hamm, Daniel

Harris, Christina Hendricks, Maryann Hendricks, Robert Henegar, Dawnell Hindelang, Sherry Hinton, Tamecca Hobbs, Tenitia Hobson, Henrietta Jones, Naomi Jones, Shannon Jongema, Alisa Karney, Erika Kim, Barbara Layman, David Leadbetter, Linder Lemmons, Kathy Lewis, Kathy Lovett, Michael Lubiani, Pratik Mamtara, Caelan Marshall, Zamara Marshall, Lisa Matlock, Teresa McCall, Mary Lou McCaslin, Jean McElrath, Lisa McFarland, Mandy McKay, Tracey Mckinzie, Chris Miller, Lynette Miller, Regina Morton, Courtney Murray, Qayyimah Nunn, Kellan Oelkers, Kylon Outley, Lisa Parr, Jessica Payne, Justine Piontek, Charles Ratcliff, Adrian Rayo, Barbara Rea, Tamiko Rhodes, Amy Rush, Carol Russell, Adam Sanders, Martha Sanders, Julie Scarpace, Lucca Scarpace, Todd Scarpace, Marlena Shorter, Heather Smith, Lydia Smith, Mackenzie Smith, Linda Soresi, Sabrina Spence, Megan Spillyards, Alyssa Stephens, Gail Stephens, Sabrina Stokes, Robert Sutton, Stephanie Taylor, Charlotte Tedder, Brad Terhune, Joan Terhune, Shirley Toler, Annette Vescovo-Lawrence, Kaylee Webb, Kelli Wiatr, Ann Wieties, Jennifer Wilkinson, Nathan Wilson, Linda Weiss, Alice Zalon



Elevating the  
Human Spirit™

### In-Home Care to Help Seniors Thrive

Our empathetic, in-home care helps seniors thrive while living independently. Whether your loved one needs medication reminders, transportation to appointments, or personal care, Comfort Keepers is here to provide support and build meaningful relationships.

#### In-Home Care Services

- Personal care
- Companionship and housekeeping
- Dementia and Alzheimer's care
- Respite care
- Safety solutions

**901-207-8209**

Home + Life + Care | [ComfortKeepers.com](https://www.comfortkeepers.com)

Comfort Keepers of the Mid-South, 5668 S Rex Rd #200, Memphis, Tennessee 38119

© 2022 CK Franchising, Inc. An international network where most offices are independently owned and operated.



COMPUTER  
HARDWARE  
SERVICES

*For all your computer,  
hardware and software needs.*

- On site service and repair available
- Cabling of your home or business for phone and network (BICSI and RCDD)
- Offsite backup
- Check us out online at [www.computerhardwareservices.com](http://www.computerhardwareservices.com)

662-404-6177

*SWEET NOTES*



*Dinstuhl's*

*Fine Candies Since 1902*

MEMPHIS, TN | 800.355.0358 | [DINSTUHL.COM](http://DINSTUHL.COM)

MEMPHIS  
436 GROVE PARK

GERMANTOWN  
7730 POPLAR AVE

MEMPHIS  
5280 PLEASANT VIEW RD

COLLIERVILLE  
231 NEW BYHALIA RD

**Season Presenting Sponsor for the 2022-23 Season**



**ArtsFIRST**

Art lifts our spirits and expands our horizons. Because art plays a vital role in a healthy community, expressing the diversity within our common humanity, the First Horizon Foundation is a long-time supporter. As one of our signature investments, ArtsFirst is a program to promote excellence and enrichment in the arts in Memphis. This new approach allows us to partner with ArtsMemphis in the grant-making area while ensuring a continued significant impact in the community.

**THANK YOU FIRST HORIZON FOUNDATION/ARTSFIRST FOR  
TRUSTING THEATRE MEMPHIS AND RECOGNIZING THE IMPORTANT  
ROLE THEATRE MEMPHIS PLAYS IN THE COMMUNITY**

# *Theatre Memphis Applauds Our Contributing Members*

Theatre Memphis gratefully acknowledges the generosity of the individuals, corporations, and foundations that have invested in our theatre. You are the reason we have enjoyed a rich 100-year history as one of the most acclaimed community theatres in the nation, and we are most grateful for you.

Ticket sales do not cover the full costs of our productions and programs. Your contributions through Production Sponsorships, Center Stage Society, Line Producers, and Contributing Subscribers make it possible to present productions of the highest quality. Annual contributions and support will ensure our future.

Please accept our sincerest appreciation for your outstanding support. If we have made an error or if we have not listed your name or company as you wish it to appear, please call Kaitlin at 901-682-8601.

## **Life Members**

Gene & Sandra Cochran  
Janie McCrary

## **Producers**

Dr. Anita Arnold  
Bert & Carol Barnett  
Gary Beard  
Pat & Charles Beech  
Jim & Linda Brigrance  
Kitty Cannon & Jim Waller  
Mr. & Mrs. George E. Cates  
Katie & Keith Cole  
Foy Coolidge  
Bryan & Tracey Ford  
Kim & Mabry Ford  
Dr. Tom Fortner  
Robert Gilbert  
Martha & Jerrold Graber  
John & Janice Hall  
Pamela Hauber  
Shawn Hayden & Connor Parris  
James R. Humphreys  
Jared Thomas Johnson  
Dorothy O. Kirsch  
Jude Knight  
Janette "JJ" & Bobby Krauch  
Ronald Kwoka  
Louise Levin  
Dr. Mel & Debbie Litch  
Jerry & Elizabeth Marshall  
Ron Martin & Curtis Jones  
Missy McClendon  
James & Veronica McCraw  
Lynn McDonald  
Rona Mogil & Douglas Green  
Seldon & Carolyn Murray  
Richard Myers  
Dennis & Sarah Norton  
Sheppie T. Quinn  
Dr. Thomas W. Ratliff  
Cathy & Harold Richardson  
Mark Ruleman  
Bill Short  
Shannon Sparks  
Richard Tanner  
Asan G. Tejwani  
Bobby & Nancy Walton  
Carroll White & Anne Piper-White  
Josh Whitehead

Camilla Wilson

## **Stars**

David L. Allen  
Dr. Phillip & Mrs. Carol Aronoff  
Mr. & Mrs. Stanley Bilsky  
Jerry & Marjorie Bowman  
Dr. & Mrs. David Deneka  
Michael & Tricia DeShazo  
Patricia Fletcher  
Barry and Lihan Frager  
Frager Law Firm, P.C.  
David Freeman  
Diana Jones  
Majestic Wine & Liquor  
Scott & Carol Mednikow  
Dr. Brent & Kimbrough Mullins  
Cynthia Nash & Angela Cabrera  
Jim & Betsy Pentecost  
Jeff & Robin Pohlman  
Missy Reeder  
Randa Rosenblum  
Cynthia & Marco Ross  
Edward Sharp  
Bennett Wood

## **Leading Players**

Bill & Susan Andrews  
Clifford & Olive Bird  
Mary Bowen  
Andy & Becky Burkeen  
Matthew & Sara Clark  
Jim & Pat Corbitt  
Michael Davis  
Robert Dumais  
Michael Fannon  
Diana & Mickey Foster  
Tim & Kristi Francavilla  
Ray & Betha Gill  
Howard Glatstein  
Carol Greenwald  
John & Judy Griesbeck  
David & Pamela Hallin  
Alvin Harris  
Linda Harris  
Joyce Howell  
Jerry Huff  
William & Barbara Johns  
Kennison Kyle

James & Susan Lattimore  
Lola & Bob Llewellyn  
Jeff & Andrea McLeod  
Rodgers Menzies  
Randy Moss  
Amanda Prislovsky  
Harry & Flora Samuels  
Gus Schroeder  
William & Courtney Segal  
Jeb Shehan  
Patrick Siano  
Ron & Linda Sklar  
Charles & Mary Stewart  
Ellen I. Watson  
Kathy Wexler  
Billie Anne Williams  
Cindy Williams

## **Supporting Players**

Breen Bland & Jeannie Mercer  
Karen Bowyer  
Olivia & Wallace Bruce  
Bob & Beverly Buchalter  
Nora & Dan Conaway  
Kim Constantinides  
Bill & Luci Cromer  
Josie Elosua  
Eric & Cindy Eurich  
Cecil Fox  
Carol Geller  
Nancy & Art Graesser  
Henry Greimke  
Pamela Guasco  
Natalie & Jimmy Jalenak  
Krista & David Jones  
Shawn King  
Christiana & Joe Leibovich  
Gail Lewis  
May Lynn Mansbach  
Andrew J. Morgret  
J.J. Murphy  
Carl Panetta  
Ann L. Powell  
Candi Schoenberger  
Robert Serino  
Mel & Donna Skees  
Missy & Joe Skinner  
Betsy Tedder  
Michael & Marcia Ann Weiss  
Robert Wilson

# ACKNOWLEDGMENTS

*Special thanks to*

## HONORARIUMS

**Jeff Brewer** *from Susan Moskop*

**Dabney Coors** *from Deborah Dunklin Tipton and Mary Elisabeth Tipton*

**Claire Grant** *from Stephanie Grant*

**Jude Knight** *from Carol and Phil Dunavant*

**Jude Knight and Skip Hooper** *from Kathy Frazier*

**Debbie Litch** *from Mr. and Mrs. C. Bradford Foster III, John and Anne Robilio,  
Deborah Dunklin Tipton and Mary Elisabeth Tipton*

**Bill Short** *from John Brady*

**Zachary Vance** *from Amy Huff*

**Cecelia Wingate** *from Frances McGuffey*

## MEMORIALS

**Jerry Chipman** *from Christopher McCollum*

**Sarah L-C Flowers** *from Austin Hasenmueller*

**Robert I. Gilbert** *from Harriet Montgomery*

**Sylvia Huggins** *from Frances McGuffey*

**Betsy Reeder** *from Patricia J. Owens*

**John Rone** *from John Brady*

**Claire Thompson** *from Walter M. Thompson II*

**Eric Thompson** *from Walter M. Thompson II*

**Mr. and Mrs. C.Q. Tipton** *from David Tipton*



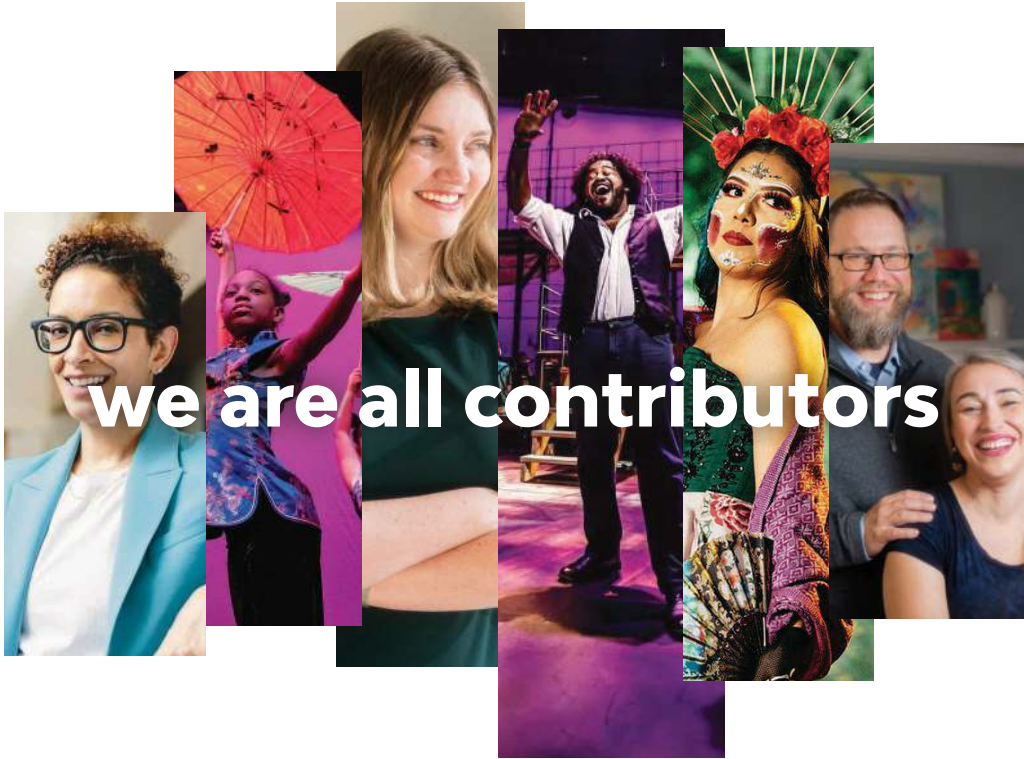
An AutoZoner Always...

# Cares About People

Proud to Support Theatre Memphis

©2021 AutoZone, Inc. All Rights Reserved. AutoZone and AutoZone & Design are registered marks of AutoZone IP LLC or one of its affiliates. All other marks are property of their respective owners.





we are all contributors

## ArtsMemphis®

---

Proud to have granted \$3.1 million to 67 arts organizations and hundreds of individual artists this past fiscal year through strategic partnerships and new avenues to support people, programs, and operations.

ArtsMemphis is expanding the foundation of the arts to strengthen our community.

---

Whether a patron, artist, stagehand, educator, or donor, together, we are all contributors to the **arts**.

Join us  
[artsmemphis.org](https://artsmemphis.org)



# Prepare Yourself.



- EXIT strategy
- SUCCESSION planning
- PERSONAL effectiveness

**FocalPoint**  
Coaching & Training Excellence

**AWARD-WINNING BUSINESS COACH**

**Eric B. Eurich**

Certified Coach/Trainer

**901.340.9558**

[ericeurich.com](http://ericeurich.com)

**[LIBRO]**  
AT LAURELWOOD



387 Perkins Extended  
[LibroLaurelwood.com](http://LibroLaurelwood.com)  
901.800.2656



**BILTMORE®**

**by Raymond Mazza**



Exclusively in Memphis at

**RB**  
SINCE 1963  
**RUSSELL BROTHERS**  
FINE JEWELERS



**4646 Poplar Avenue, Suite 109, Memphis, TN 38117 • 901.682.5471**

# GOAT 25 YEARS OF RAZZLE DAZZLE



**APRIL 4-9 • ORPHEUM THEATRE**  
**TICKETS AT [ORPHEUM-MEMPHIS.COM](http://ORPHEUM-MEMPHIS.COM)**

BROADWAY SEASON SPONSORED BY

Memphis Area  
Honda Dealers  
LL BECKMAN

TRUIST 

PHOTO: JEREMY DANIEL



# PLAYHOUSE ON THE SQUARE

**THE MID-SOUTH'S PROFESSIONAL THEATRE COMPANY**

**66 SOUTH COOPER ST, MEMPHIS, TN, 38104**

## FALL 2022

SHANKTOWN (JULY 8 - JULY 24)

GREAT WINE PERFORMANCES (JULY 19)

SOMETHING ROTTEN! (AUGUST 19 - SEPTEMBER 18)

PASS OVER (SEPTEMBER 16 - OCTOBER 9)

THE WIZARD OF OZ (NOVEMBER 11 - DECEMBER 22)

JUNIE B'S ESSENTIAL SURVIVAL

GUIDE TO SCHOOL (NOVEMBER 18 - DECEMBER 22)

WHO'S HOLIDAY (NOVEMBER 25 - DECEMBER 22)

>> BOX OFFICE: (901) 726-4656 <<  
VISIT US ONLINE: [WWW.PLAYHOUSEONTHE SQUARE.ORG](http://WWW.PLAYHOUSEONTHE SQUARE.ORG)

PLAYHOUSE ON  
THE SQUARE

THE CIRCUIT  
PLAYHOUSE

THEATREWORKS  
ON THE SQUARE

SPECIAL  
EVENTS

TOURING  
PRODUCTION

## WINTER 2023

IF PEKIN IS A DUCK,

WHY AM I IN CHICAGO? (JANUARY 13 - JANUARY 29)

THE SCOTTSBORO BOYS (JANUARY 20 - FEBRUARY 19)

ROE (FEBRUARY 3 - FEBRUARY 19)

UNIFIED PROFESSIONAL

THEATRE AUDITIONS (FEBRUARY 3 - 6)

## SPRING 2023

FRECKLEFACE STRAWBERRY

THE MUSICAL (MARCH 18 - APRIL 15)

P. NOKIO: A HIP-HOP MUSICAL

TOURING THE MID-SOUTH REGION (MARCH 21 - MAY 19)

INK (MARCH 24 - APRIL 16)

45TH ANNUAL ORIGINAL ART AUCTION (APRIL 22)

## SUMMER 2023

NATASHA, PIERRE &

THE GREAT COMET OF 1812 (APRIL 28 - MAY 21)

CLYDE'S (MAY 12 - JUNE 4)

JERSEY BOYS (JUNE 16 - JULY 16)





Whitehorn  
Tankersley &  
Davis, PLLC

CERTIFIED PUBLIC ACCOUNTANTS

670 OAKLEAF OFFICE LANE / MEMPHIS, TENNESSEE 38117-4811 / (901) 767-5080 / (901) 767-5263 FAX

Proudly supporting  
the Arts in Memphis



**PAULSEN**  
PRINTING COMPANY



BRINGING **COLOR** TO **LIFE**  
**901-363-5988**

**TOPS BAR-B-Q**

**MEMPHIS**  
Since 1952 **BEST**

Famous Smoked Ribs  
Pork Shoulder  
Beef Brisket  
Cheeseburgers

And We Cater Too

901.667.8677



# EMBASSY APARTMENTS

Luxury and Location



Offering one, two, and  
three bedrooms

For more information

**901.685.8020**

Utilities Included

See our floorplans @  
[embassyaptsmemphis.com](http://embassyaptsmemphis.com)

505 South Perkins Rd.  
In the Heart of East  
Memphis

[www.embassyaptsmemphis.com](http://www.embassyaptsmemphis.com)

# TOMMY KHA:



Memphis  
Brooks  
Museum  
of Art



PRESENTED WITH



# EYE IS ANOTHER

Memphis Brooks Museum of Art | Open in Overton Park | [BrooksMuseum.org](http://BrooksMuseum.org)