

Beautiful

The Carole King Musical



THEATRE MEMPHIS presents

“BEAUTIFUL: THE CAROLE KING MUSICAL”

Book by **DOUGLAS McGRATH** ■ Music and Lyrics by **GERRY GOFFIN**
and **CAROLE KING, BARRY MANN** and **CYNTHIA WEIL**

Director **CECELIA WINGATE** ■ Choreographer **CHRISTI GRAY HALL**

Music Director **JASON ESCHHOFEN** ■ Sponsored by **TODD & CO. ESTATE SALES**
and **WORLD CATARACT FOUNDATION**

Additional Support by **BRYAN & TRACEY Z. FORD** and **JOHN & ANNE ROBILIO**

Media Sponsors **WKNO 91.1FM** and **MEMPHIS FLYER**

MARCH 8-30

WKNO • FM

Generous support provided by

Memphis Flyer



FIRST HORIZON
FOUNDATION

ARTSMEMPHIS



TENNESSEE
ARTS
COMMISSION

THE JENIAM
FOUNDATION

TODD & CO



THEATRE MEMPHIS in the LOHREY THEATRE



TICKETS 901.682.8323 ONLINE theatrememphis.org

© 2024



WESTMINSTER
ACADEMY

The Education for a Lifetime



**What is the Purpose of Education?
Admission to college? High test scores?
Or something greater?**

**At Westminster Academy, we equip students to pursue God's truth,
goodness, and beauty in the world around them - all while preparing
them for any path they choose upon graduation.**

**We invite you to reconsider the purpose of education,
and discover the beauty of a classical
Christian education!**

Schedule a tour to see the classical difference!



JK-12 | CLASSICAL | CHRISTIAN | 901.380.9192 | WAMEMPHIS.COM

Vol. CXI, No. 5
2023-2024
March 8-30, 2024

AFFILIATIONS

American Association of Community Theatres
ArtsMemphis
Southeastern Theatre Conference
Tennessee Arts Commission
Tennessee Theatre Association

THEATRE MEMPHIS STAFF

Debbie Litch, *Executive Producer*

Administrative Staff

Lisa Hall-Hayes, *Operations Manager*
Randall Hartzog, *Director of Marketing/Communications*
Kaitlin Brucker, *Office Manager/Usher Coordinator*
Lisa Chang, *Finance Manager*
Christina Hendricks, *Senior Box Office Assistant*
Emma Clark, *Box Office Assistant*
Sharri Reid, *Box Office Assistant*
Julia Truelove, *Box Office Assistant*
Molly Waugh, *Box Office Assistant*
Claudia Bacigalupo, *House Manager*
Daniel Myers-Ray, *House Manager*
Linda White, *House Manager*
Johnny Gaither, *Building & Grounds*

Production Staff

Michael Compton, *Production Manager/Technical Director*
Becky Caspersen, *Director of Stage Management, Outreach & Volunteer Engagement*
Gary Beard, *Music Consultant*
Amie Eoff, *Resident Costume Designer*
Jack Netzel-Yates, *Resident Scenic Designer/Properties Master*
Nicole Northington, *Resident Lighting Designer*
Jason Eschhofen, *Resident Sound Designer*
Ashley Selberg, *Costume Shop Manager*
Brigitte Hutchison, *Costume Shop Technician*
Maggie Jackson, *Assistant Technical Director*
Chelsea Robinson, *Stage Management, Outreach & Volunteer Engagement Manager*
Abi Walker, *Stage Management, Outreach & Volunteer Engagement Assistant*
Karon Samuels, *Outreach & Education Programs*

Box Office: 901.682.8323

Advertising: 901.682.0264

www.theatrememphis.org

Poster/Cover Created by Missy McClendon

Promotional Photo by Steve Roberts

Production Photos by Carla McDonald

ARTSmemphis®



M THEATRE MEMPHIS

Always Entertaining

2023-2024
Theatre & Dance
SEASON

The inaugural year of the
Edward and Bernice
Humphreys Theatre Building

MURDER BALLAD
A Steamy Rock Musical
Sept. 20 – 23

ELEKTRA
A Thrilling Greek Classic
Oct. 26 – 28 and Nov. 2 – 4

CHROMA
A Faculty Dance Concert
Nov. 16 – 18

SILENT SKY
An Inspiring “Her-Story” Drama
Feb. 7 – 10

EMERGE 360
New Student Dance Works
March 29 – 30

INTO THE WOODS
An Enchanting Musical
April 11 – 13 and 18 – 20

For event information go to
memphis.edu/theatre

TODD&CO

Memphis'
Finest
Estate
Sales

901-238-6806

temperature, inc.

congratulates

THEATRE MEMPHIS

on 102 years of entertaining the community!

Proudly Serving the Mid-South since 1969!

A/C and Heating Installation & Service
Computer Room A/C Installation & Service
Controls
Energy Management
Building Management
Utility Savings
Building Access Systems
Rental Chillers and Cooling Units
Chiller Conversions

Chiller Replacements
Hepa and Pleated Filters
Refrigeration
Piping and Process Piping
Gas Piping
Used Equipment
Facilities Management
Ventilation
HVAC Maintenance Contracts

7500 Appling Center Drive
Memphis, TN 38133
Office 901.388.4706
Fax 901.388.9797

Next at Theatre Memphis

In the Next Stage:

Master Class

Written by Terrence McNally

Directed by Kell Christie

April 5 – 21, 2024

Fierce and Clever. Diva opera star Maria Callas is alternately dismayed and impressed by students who parade before her. In this one Master Class, she reminisces the glories and criticisms of her own career and tumultuous life. Manifesting the unforgiving elements of her life in a final monologue, she decries the sacrifices she has made, taken in the name of art ... from her childhood, to her bitter rivalries, to her private life and to her triumphs at La Scala.

Adult: \$25

Member/Senior/Military: \$20

*Student: \$15

In the Lohrey Theatre:

Steel Magnolias

Written by Robert Harling

Directed by Jerre Dye

April 26 – May 12, 2024

Charming and Heartfelt. The bond among a group of Southern women shows as they deal with the good fortune and tragedy that comes to them. It is a touching portrait of women that celebrates their strength as humor and irony abound with charming yet powerfully comedic sensibility. Time passes, and the women and their friends grow stronger and closer in the process.

Adult: \$25

Member/Senior/Military: \$20

*Student: \$15

*Student tickets are available to those 18 and under as well as college students with a valid ID.

**Call the Box Office at 901.682.8323 for reservations
or order tickets online at www.theatrememphis.org**

Experience the Magic
OF STEINWAY SPIRO



play | listen | record | edit



AMRO
PIANO GALLERY

MEMPHIS | AMROMUSIC.COM



An AutoZoner Always...
Cares About People

Proud to Support Theatre Memphis

©2023 AutoZone, Inc. All Rights Reserved. AutoZone and AutoZone & Design are registered marks of AutoZone IP LLC or one of its affiliates. All other marks are property of their respective owners.

From the Executive Producer...



THANK YOU! It brings me the greatest joy and appreciation to say thank you to YOU! Thanks to you, we are experiencing record attendance and ticket sales. Your vote of confidence and enthusiastic endorsement of our productions mean everything to us and our beloved Theatre Memphis as we showcase our outstanding Memphis talent! And, because of capacity crowds, we are pleased to announce we will add additional parking parallel to Southern Avenue with added lighting at the conclusion of our 2023-24 season.

I am most excited to announce our 2024-25 season. Here is our outstanding season:

Lohrey Theatre

- ***GREASE (is Still the Word)!*** (Theatre Memphis premiere) Director and Choreographer Whitney F. Branan, Music Direction by Jeffery Brewer
- Agatha Christie's ***The Mousetrap*** Directed by Bruce Huffman
- ***A Christmas Carol*** Directed by Jordan Nichols and Travis Bradley, Music Direction by Jeffery Brewer
- Disney's ***Beauty and the Beast*** Directors and Choreographers Jordan Nichols and Travis Bradley with Music Direction by Jeffery Brewer
- Neil Simon's ***Rumors*** Director Ann Marie Hall
- ***Ain't Misbehavin' The Fats Waller Musical*** Director Jared Thomas Johnson, Music Direction by Tammy Holt

Next Stage

- Shakespeare's ***A Midsummer Night's Dream*** Director John Maness
- ***Parallel Lives*** featuring **Kim Eikner Justis and Jenny Odle Madden** Director Ann Marie Hall
- ***Inherit the Wind*** Director Jeffrey Posson
- ***Silent Sky*** (Back by Popular Demand) Director Cecelia Wingate

And this summer we will offer a special production of Disney's *The Descendants* in July 2024 as part of our Outreach and Education summer workshop and performance series.

The TM memberships for the new 2024-25 season are on sale and include six tickets that are good for any performance in the Lohrey Theatre or The Next Stage and can be used in combination on any show, excluding ***A Christmas Carol*** which is *not* part of the membership package. Season members do, however, receive discounts on tickets to the holiday production and special offerings. **Regular Memberships secured prior to September 10, 2024, will receive a \$10 discount off the regular membership price of \$150 and a seventh ticket!** Please sign up at intermission or available by calling the box office at 901.682.8323.

Your safety as well as our actors, crew, staff and volunteers are a top priority at Theatre Memphis. We continue to evaluate and incorporate initiatives to address the safety of all of our patrons, volunteers and staff during this challenging time. We have security patrol at each of our performances and rehearsals to help ensure safety to you, our treasured staff and volunteers as well as your vehicles. Remember to *"get up every morning with a smile on your face...because you're BEAUTIFUL!!"* Enjoy!!

Debbie

THEATRE MEMPHIS

Presents

Beautiful
The Carole King Musical

Book by

Douglas McGrath

Words and Music by

Gerry Goffin & Carole King Barry Mann & Cynthia Weil

Music by Arrangement with

Sony Music Publishing

Orchestrations, Vocal and Incidental Music Arrangements

Steve Sidwell

Additional Music Arrangements by

Jason Howland

Originally Produced on Broadway by

Paul Blake Sony Music Publishing Mike Bosner

Directed by **Cecelia Wingate**

Choreographed by **Christi Gray Hall**

Music Direction by **Jason Eschhofen**

Lighting Design

Nicole Northington

Costume Design

Amie Eoff

Scenic & Properties Design

Jack Netzel-Yates

Sound Design

Reyn Lehman

Wig, Hair & Make Up Design

Ellen Ring & Rence Phillips

Assistant Director

Bruce Huffman

Dramaturg

Olivia Gacka

Stage Manager

Chelsea Robinson

Production Manager/Technical Director

Michael Compton

Season Presenting Sponsor: **First Horizon Foundation/ArtsFirst**

Show Sponsors: **Todd & Company Estate Sales**

and **World Cataract Foundation**

Additional Support by: **Bryan & Tracey Z. Ford** and **John & Anne Robilio**

Media Sponsors: **WKNO 91.1 FM** and *Memphis Flyer*

Cast of Characters

<i>Carole King</i>	Cameron Crawford
<i>Gerry Goffin</i>	Nathan McHenry
<i>Cynthia Weil</i>	Whitney Branan*
<i>Barry Mann</i>	Bentley Black
<i>Don Kirshner</i>	Kinon Keplinger
<i>Genie Klein</i>	Jaclyn Suffel
<i>Bill Medley (Righteous Brother) / Lou Adler / Dave Sommerville</i>	Justin Asher
<i>Bobby Hatfield (Righteous Brother) / Nick / Gene Vincent</i>	Stephen Garrett
<i>Lucille</i>	Jauna Chatman Ellis
<i>Marilyn Wald</i>	Jacqueline Cooper
<i>Betty</i>	Mary Helen McCord
<i>Neil Sedaka / Bobby Vee</i>	Will Lowery
<i>“Uptown” Soloist</i>	Mac White

The Drifters / Ensemble

Thedrick Griffin, Justin Raynard Hicks, Jared Thomas Johnson,
Kortland Whalum

The Shirelles / The Chiffons / Ensemble

Jauna Chatman Ellis, Marissa Gilliam (*Little Eva*),
Kierra Turner (*Janelle Woods*), Mac White

Ensemble

Ashundra Bernard, Jacqueline Cooper, Will Lowery,
Mary Helen McCord, Nicholas Weaver

Understudies

Ashundra Bernard (*The Shirelles*), Jacqueline Cooper (*Carole King / Cynthia Weil*), Will Lowery (*Righteous Brothers*), Mary Helen McCord (*Marilyn Wald*), Nicholas Weaver (*The Drifters*)

*The Actor appears through the courtesy of Actors' Equity Association, the Union of Professional Actors and Stage Managers in the United States.

Orchestra

Jason Eschhofen, *Keyboard/Conductor*
Pete Vescovo, *Bass*
Larry Gooch, *Drums*
Corbin Miles, *Guitar*
Nathan Nix, *Reed 1*
Brian Sims, *Reed 2*
Ben Lewis, *Trumpet*
Andrew Earle, *Trombone*



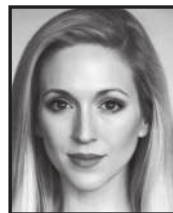
Justin Asher



Ashundra Bernard



Bentley Black



Whitney Branan



Jacqueline Cooper



Cameron Crawford



Jauna Chatman Ellis



Stephen Garrett



Marissa Gilliam



Thedrick Griffin



Justin Raynard
Hicks



Jared Thomas
Johnson



Kinon Keplinger



Will Lowery



Mary Helen McCord



Nathan McHenry



Jaclyn Suffel



Kierra Turner



Nicholas Weaver



Kortland Whalum



Mac White



Cecelia Wingate
Director



Christi Gray Hall
Choreographer



Jason Eschhofen
Music Director/
Conductor

Musical Numbers

Act I

<i>So Far Away</i>	Carole King
<i>Oh! Carol</i>	Neil Sedaka
<i>1650 Medley</i>	Company
<i>It Might As Well Rain Until September</i>	Carole King
<i>September Playoff</i>	Bobby Vee
<i>Be-Bop-A-Lula</i>	Gene Vincent
<i>Some Kind of Wonderful</i>	Carole King, Gerry Goffin, The Drifters, Company
<i>Happy Days/Cynthia</i>	Cynthia Weil
<i>My Little Darlin' Carole</i>	Dave Sommerville, Neil Sedaka
<i>Almost "Take Good Care"</i>	Carole King
<i>Take Good Care of my Baby</i>	Gerry Goffin, Carole King
<i>Who Put the Bomp</i>	Barry Mann
<i>Will You Still Love Me Tomorrow?</i>	Carole King
<i>He's Sure the Boy I Love</i>	Cynthia Weil, Barry Mann
<i>Will You Still Love Me Tomorrow? (Shirelles)</i>	The Shirelles
<i>Up on the Roof</i>	Gerry Goffin, The Drifters
<i>On Broadway</i>	The Drifters
<i>The Loco-Motion</i>	Little Eva, Company
<i>You've Lost That Lovin' Feelin'</i>	Barry Mann, The Righteous Brothers, Company
<i>One Fine Day</i>	Janelle Woods, The Chiffons
<i>One Fine Day Reprise (Carole)</i>	Janelle Woods, The Chiffons, Carole King

There will be one 15-minute Intermission.

Act II

<i>Chains</i>	Carole King, Ensemble
<i>Walking in the Rain</i>	Barry Mann, Cynthia Weil
<i>Pleasant Valley Sunday</i>	Marilyn Wald, Gerry Goffin, Company
<i>We Gotta Get Out of This Place</i>	Barry Mann
<i>Will You Still Love Me Reprise</i>	Carole King
<i>Uptown</i>	"Uptown" Soloist, Ensemble
<i>It's Too Late</i>	Carole King, Ensemble
<i>Tapestry</i>	Carole King
<i>You Make Me Feel Like A Natural Woman</i>	Carole King, Ensemble
<i>Beautiful</i>	Carole King, Company
<i>Bows</i>	Company

***Please be advised that this production
contains haze and flashing light effects.***

Who's Who

Justin Asher (Righteous Brother – Bill Medley / Lou Adler / Dave Somerville) is so excited to be returning to the Theatre Memphis stage in this “beautiful” production! Some of his favorite roles at TM include Roger Debris in *THE PRODUCERS*, Shrek in *SHREK THE MUSICAL*, Archibald Craven in *THE SECRET GARDEN*, and Lurch in *THE ADDAMS FAMILY*.

Ashundra Bernard (Ensemble / u/s The Shirelles) recently performed in *CHRISTMAS AT GRACELAND* with John Legend as well as *SUNDAY MORNING* and *JUNETEENTH* with the Young Actors Guild. She is the owner of Test Anywhere Lab and has been a Registered Nurse for 14 years. She dreams of becoming an award-winning singer and actress someday!

Bentley Black (Barry Mann) is thrilled to be making a return to the Theatre Memphis stage after an 18 year hiatus! TV credits include *THE MARVELOUS MRS. MAISEL*. Theatre credits include *Queen's WE WILL ROCK YOU* (1st National Tour), *WEST SIDE STORY*, *NEWSIES*, *THE SOUND OF MUSIC*, *THE ROCKY HORROR SHOW*, and *FOOTLOOSE* (Ren, POTS). Bentley recently worked with DeSoto Family Theatre on their productions of *THE SOUND OF MUSIC* (Director/Choreographer) and *WINTER WONDERETTES* (Choreographer). Still happy to have Mom in the audience!

Whitney Branan (Cynthia Weil) has performed across the country (dancer at Bally's Casino in Las Vegas) and across the ocean (three award-winning tours to the International Fringe Festival in Scotland). She was the resident tap coach for *BILLY ELLIOT* on Broadway and two of its national tours. NYC credits include Janet Van De Graaf in *THE DROWSY CHAPERONE* (The Gallery Players), Sheila in *HAIR* (Dillon's Mainstage West 54th), Catherine in *PIPPIN* (Snug Harbor), and Kelly in *THE IRISH AND HOW THEY GOT THAT WAY* (Queens Theatre in the Park). Tour: *JOSEPH AND THE AMAZING TECHNICOLOR DREAMCOAT*. Regional credits at Playhouse on the Square include *CABARET* (Sally Bowles), *THE PROM* (Angie), *PRISCILLA: QUEEN OF THE DESERT* (Marion), and *HAIRSPRAY* (Amber Von Tussle); at Theatre Memphis, *HAIRSPRAY* (Velma Von Tussle), *NEWSIES* (Race), *ANYTHING GOES* (Reno Sweeney), *LA CAGE AUX FOLLES* (Angelique), and *A CHORUS LINE* (Val); and at DeSoto Family Theatre, *NEWSIES* (Katherine) and *BAREFOOT IN THE PARK* (Corie). Film: *THE BLIND SIDE*, *EAR OF THE HEART*, *STREAKER*, *IT IS WHAT IT IS*. SAG-AFTRA, AEA, & SDC unions. insta: @whitneybranan. whitneybranan.com

Jacqueline Cooper (Marilyn Wald / Ensemble / u/s Carole King, Cynthia Weil) is honored to return to Theatre Memphis with an incredible team in *BEAUTIFUL: THE CAROLE KING MUSICAL*. Since 2016, Jacqueline has been involved in several TM productions on and off the stage including *SONDHEIM TRIBUTE*, *GUYS AND DOLLS*, and *URINETOWN*. Recently, Jacqueline played Glinda in Playhouse on the Square's *THE WIZARD OF OZ*. Notable performances include Mary Magdalene in *JESUS CHRIST SUPERSTAR*, Ulla in *THE PRODUCERS*, Mrs. Wormwood in *MATILDA THE MUSICAL*, and Beggar Woman in *SWEENEY TODD*. Jacqueline would like to thank her family and friends for their unwavering support. Jacqueline would like to make a special thank you to Bruce Huffman for being her constant.

Cameron Crawford (Carole King) is proud to share this music and story! Recent credits include *MARY POPPINS*; *NATASHA, PIERRE & THE GREAT COMET OF 1812* (Ensemble / u/s Natasha); *SONDHEIM TRIBUTE*; *SOMETHING ROTTEN!*; *BRIGHT STAR* (Lucy); and *LA CAGE AUX FOLLES* (Anne). “Thank you, Cecelia and Jason, for this opportunity! Big love to my family!”

Ashley Cunningham (Assistant Stage Manager) has been singing and dancing for over 30 years. She was previously seen in *GUYS AND DOLLS* (TM), *MAMMA MIA!* (TM), and was ASM for *HAIRSPRAY* (TM). “Thank you, Cecelia, Bruce, Jason, Christi, and Chelsea, for trusting me to help get this amazing show on its feet!”

Jauna Chatman Ellis (Lucille / Shirelle / Chiffon / Ensemble), a native Memphian, is a graduate of Overton High School for the Performing Arts, where she was a proud member of the CAPA Program for Vocal Music. She attended the University of Mississippi on a Vocal Music Scholarship, but received her Bachelor of Fine Arts degree in Theatre. Jauna was the former Early Childhood Music Teacher at Christ Methodist Day School and St. Mary's Episcopal School. She founded the elementary theatre programs at both schools. Jauna is a member of Second Presbyterian Church and part of the Chancel Choir. She is married to Calvin Ellis, and enjoys working alongside him in various musical projects. Her pride and joy are in her two beautiful children, Caleb and Carrington. Recent credits include *MOTHERHOOD THE MUSICAL* at GCT, and a community concert entitled *JAUNA ELLIS AND FRIENDS*, featuring classical works, musical theatre favorites, and spirituals. She currently works at Chene Gear, LLC as a customer service professional. She is beyond thrilled to be joining the cast of *BEAUTIFUL*. Jauna would like to dedicate her performance to her mother, Shirley Faye Chatman.

Jason Eschoffen (Music Director / Conductor) has a BA in Voice Performance and Studio Recording Technology from Bowling Green State University and an MM in Voice Performance from The University of Memphis. Some of his favorite local credits include *THE 25TH ANNUAL PUTNAM COUNTY SPELLING BEE* (music direction), *RUTHLESS! THE MUSICAL* (music direction), and *THE CRUCIBLE* (sound design) at Theatre Memphis; and *Days of Rage* (sound design) and *Murder for Two* (Marcus Moscovicz, co-music direction, sound design/recording/engineering) at

Who's Who

Playhouse on the Square. Additionally, Jason has been the Music Director for the High School Musical Theatre Awards at the Orpheum since 2017 and for the Ostrander Awards since 2019. He has won Ostrander Awards for Best Musical Direction (NINE, University of Memphis), Best Sound Design (URINETOWN THE MUSICAL, Theatre Memphis), and the Larry Riley Rising Star Award. "Much love to my fiancée, Olivia, and our Beautiful beagle, Rua!"

Olivia Gacka (Dramaturg) is so excited to be back (from afar) on a Theatre Memphis production! Favorite directing credits include Missy Mazzoli's PROVING UP (Opera Steamboat), NEXT TO NORMAL (GCT, Ostrander Award nomination), and HEATHERS THE MUSICAL (McCoy Theatre, Mid-South regional premiere). Recent assistant directing and dramaturgy credits include everything from SHERLOCK'S LAST CASE at TM to TOSCA, SWEENEY TODD, GIANNI SCHICCHI, LA CALISTO, and LA TRAVIATA with companies across the Midwest. Olivia is currently in her final year of coursework at the University of Wisconsin-Madison for the Ph.D. in Interdisciplinary Theatre Studies. While still living in Memphis, she assistant directed under Cecelia for numerous productions at Theatre Memphis. Her favorites include SHREK THE MUSICAL and MAMMA MIA!. This summer, she will be joining Opera Theatre of Saint Louis' Gerdine Young Artist Program for their 2024 season as an Apprentice Assistant Stage Director.

Stephen Garrett (Righteous Brother – Bobby Hatfield / Nick / Gene Vincent) is in this show because his wife loves GILMORE GIRLS and Carole King sings the theme song to GILMORE GIRLS and he wants it to be known that he is firmly team Logan.

Marissa Gilliam (Little Eva / Shirelle / Chiffon / Ensemble) has appeared at Hattiloo Theatre in the Ensemble of THE COLOR PURPLE (musical) and as Second in FATHER COMES HOME FROM THE WARS. This is her first performance at Theatre Memphis. She is grateful to work with a talented group of Thespians and playing the role of the Shirelle singer, 'Lil' Eva'.

Thedrick Griffin (Drifter / Ensemble) enjoys singing, acting, and playing the piano. He has participated in musicals such as JOSEPH AND THE AMAZING TECHNICOLOR DREAMCOAT (2016), DREAMGIRLS (2017), and CLOSER THAN EVER (2018). He also performed as Ugly in HONK THE MUSICAL (2018) with the Memphis Black Arts Alliance (MBAA). Thedrick's Theatre Memphis credits include RAGTIME (2022), SISTER ACT (2023) and daytime A CHRISTMAS CAROL (2023). He played Four-Eyed Moe in FIVE GUYS NAMED MOE at Hattiloo Theatre (2022) and Ozie Powell and Victoria Price in THE SCOTTSBORO BOYS at Playhouse on the Square (2023). Thedrick is in an all-male a cappella group called DeltaCappella and was cast as background roles in NBC's YOUNG ROCK, while also being featured in a number of episodes. He's happy to share the Theatre Memphis stage once again with many iconic individuals in BEAUTIFUL.

Christi Gray Hall (Choreographer) is always thrilled to be working at TM. Christi has performed in or choreographed about 30 productions in the Lohrey Theatre. Some of her favorite works include BYE BYE BIRDIE (TM), SINGIN' IN THE RAIN (TM), 42ND STREET (TM), THE PRODUCERS (TM), BIG FISH (ND), SHREK THE MUSICAL (ND), and THE MUSIC MAN (TM & ND). Christi recently won an Ostrander Award for GUYS AND DOLLS. She choreographs for New Day Children's Theatre and several local high schools where she has been nominated for several awards. Christi would like to thank TM for this opportunity and the production team. "To my Drifters and Shirelles: I'm so proud of the hard work and how far you've come. Now go have fun with it! And last, but most importantly, thanks to my friends and family who have encouraged and supported me during this process. Love ya!"

Justin Raynard Hicks (Drifter / Ensemble) was born on January 2, 1995 in Dallas, TX. After moving to Memphis, TN at the age of 7, Justin began studying voice, acting, and dance. At the age of 15, Justin performed Isaac Hayes' Oscar Award winning hit "Theme from Shaft" at the 2011 TvOne Trumpet Awards in Atlanta, GA in honor of Richard Roundtree for his role in the 1971 film. Since then, the Stax Music Academy alum has performed both nationally and internationally at venues such as the Apollo Theater, Lincoln Center, Smithsonian Folklife Festival, The Kennedy Center, and The Gibson Showcase Museum in Berlin, Germany. Since 2012, Justin has starred in over 30 regional/community theatre productions including 10 productions at Hattiloo Theatre, THE SCOTTSBORO BOYS (Haywood Patterson) at Playhouse on the Square, and FENCES (Ostrander Award nomination) at Theatre Memphis. In July 2021, Justin as (JUSTINRAYNARD.) released his debut independent album, WHO DO U THINK U R ?, written by himself and produced by Albren "AlleeoMuzik" Spears and new album coming summer of 2024. With consistency and hard work, Justin hopes to prove to the world that he is a true triple threat entertainer.

Bruce Huffman (Assistant Director) recently performed as Max in THE PLAY THAT GOES WRONG (Ostrander Award, Supporting Actor in a Play) at Theatre Memphis. His last assistant directing credit was GUYS AND DOLLS at Theatre Memphis. He has performed on Memphis theatre stages for over 25 years and has been seen in EVIL DEAD THE MUSICAL (Ash) at New Moon Theatre (Ostrander nomination, Lead Actor in a Musical), TORCH SONG (Alan) at The Circuit Playhouse, and URINETOWN (Bobby Strong) at Theatre Memphis (Ostrander Award, Lead Actor in

Who's Who

Musical). Other credits include Gabe in *NEXT TO NORMAL* (Ostrander nomination, Supporting Actor in a Musical), Adam/Felecia in *PRISCILLA: QUEEN OF THE DESERT* (Ostrander nomination, Lead Actor in a Musical), Paul in *A CHORUS LINE*, Mark in *ALTAR BOYZ*, George in *THE DROWSY CHAPERONE*, and Edward in *BLOOD BROTHERS* (Ostrander Award, Lead Actor in a Musical). Bruce serves on a committee for the LGBTQIA+ mental health community in Tennessee. Up next, he will be directing *THE MOUSETRAP* as part of 2024-2025 season at Theatre Memphis. "Thank you Cecelia and Debbie for trusting me with another opportunity. Much love to Jackie, Robert and Biscuit."

Jared Thomas Johnson (Drifter / Ensemble / Dance Captain) is an award-winning choreographer and director. Previous Wingate productions as Choreographer include [TITLE OF SHOW], *ALTAR BOYZ*, *THE 25TH ANNUAL PUTNAM COUNTY SPELLING BEE*, and *THE PRODUCERS*; and as Assistant Director for *LA CAGE AUX FOLLES* and *SILENT SKY*. Jared's notable works as Director include *FAT HAM*, *PASS OVER* and *THE SCOTTSBORO BOYS* at POTS; and *AMERICAN SON* and this season's *A RAISIN IN THE SUN* at TM. Jared was last seen on stage as Mister in *THE COLOR PURPLE* at Hattiloo Theatre. He thanks the cast and crew for their hard work and passion.

Kinon Keplinger (Don Kirshner) is elated beyond measure to be working with Cecelia, this crew, and such a talented cast! You have seen Kinon recently on TM stages in *BLITHE SPIRIT*, *THE PLAY THAT GOES WRONG*, *ARSENIC AND OLD LACE*, *AMERICAN SON*, and many others since his first show at TM in the 1998 production of *GYPSY*.

Reyn Lehman (Sound Designer / Recording Engineer / Sound Board Operator) is thrilled to join the production team at Theatre Memphis once again! Previous credits include *ANYTHING GOES*; *1776*; *CATS*; *HELLO, DOLLY!*; and *YOU CAN'T TAKE IT WITH YOU*. She has enjoyed working in the local theatre community for many years and is always grateful to partner with TM. Carole King's music expresses so well the many aspects of life, and Reyn especially wants to thank Debbie, Cecelia, Jason, and the other design/production/performance team members for the opportunity to share in the presentation of this story. She wants to dedicate this show to her close friends in honor of one of her favorite songs – "You've Got a Friend".

Will Lowery (Neil Sedaka / Bobby Vee / Ensemble / u/s Righteous Brothers) (him/him) is thrilled to finally make his come-back debut on the Theatre Memphis stage again! After relocating back to Memphis after attending UTC and working on a double BM in Vocal Performance and Music Therapy, he was most recently seen in the ensemble of *THE PROM* and *THE WIZARD OF OZ* (u/s Tinman) at POTS. Other favorite credits include *THREE PENNY OPERA* (Street Singer) and *CATS* (Munkustrap) with the UTCTC; *NEWSIES* (Davey) at the Chattanooga Theatre Centre; and *42ND STREET* (Dance Captain), *SHREK THE MUSICAL* (Mad Matter / Ensemble), and *THE PRODUCERS* (Tap Ensemble) at TM. Will would like to thank Cecelia, Christi, Debbie and the rest of the team at TM for another amazing opportunity performing on his favorite stage in Memphis.

Mary Helen McCord (Betty / Ensemble / u/s Marilyn Wald) is excited to be back on the TM stage! Some of her previous favorites include *MAMMA MIA!* (Sophie), *MARVELOUS WONDERETTES* (Cindy Lou), and *THE SOUND OF MUSIC* (Sister Sophia / u/s Maria Rainer). Mary Helen is a graduate from Belmont University and is the Office Manager at DeSoto Family Theatre. You can see her next as Elle Woods in *LEGALLY BLONDE THE MUSICAL* at GCT. Thank you to everyone who helped make this production possible. Also, to her friends and family for their support, and the Lord for His many blessings! "Enjoy the show!"

Nathan McHenry (Gerry Goffin) moved to Memphis in 2015 to work as a performance intern at Playhouse on the Square. Subsequently, Nathan served as Resident Music Director from 2017-2021 and as a Resident Company Member from 2019-2023. Recent performances include *NATASHA, PIERRE & THE GREAT COMET OF 1812* (Anatole); *PASS OVER* (Mister/Ossifer), and *SMOKEY JOE'S CAFE*. Other memorable performances include *MEMPHIS* (Huey) and *MILLION DOLLAR QUARTET* (Jerry Lee Lewis), which both won Ostrander Awards. Favorite music direction credits include *SISTERS OF SWING* (Ostrander Award), *ONCE*, and *KINKY BOOTS*. Nathan also teaches band and choir at St. Mary's Episcopal School, serves as the pianist at First Congo Church, and plays piano/sings at events all over the Mid-South. www.nathanmchenry.com

Chelsea Robinson (Stage Manager) is the Manager of Stage Management, Outreach, and Volunteer Engagement at Theatre Memphis. She was most recently seen on stage in *THE CRUCIBLE* and *A CHRISTMAS CAROL*. She would like to thank everyone who helped make this production possible! "Enjoy the show!"

Jaelyn Suffel (Genie Klein), originally from Houston, graduated from Southwestern University with a BA in Theatre. Notable roles include The Lecturer in *New Moon's REEFER MADNESS*, Seyton in Theatre Memphis's *MACBETH*, Mathilde in TM's *CLEAN HOUSE*, Emma in *New Moon's LIZZIE*, Charlotte in TM's *FALSETTOS*, Susan in TM's [TITLE OF SHOW], and Frau Blucher in TM's *YOUNG FRANKENSTEIN*. You will see her next on the TM stage as The Madame in *CINDERELLA*. In the muggle world, she is the VP of Creative Services for Powers Solutions, a PR firm that serves local nonprofits, churches, and schools. Love to the Mob (and Kinon). She would like to dedicate this performance to her father who she knows will always have the best seat in the house.

Who's Who

Kierra Turner (Janelle Woods / Shirelle / Chiffon / Ensemble) is an accomplished actor, singer, and filmmaker from Memphis, TN. She began her professional career with Theatre Memphis' acting troupe, ShoWagon, before transitioning as a Teaching Artist for Playhouse on the Square and the Orpheum Theatre. Her recent stage credits include PRETTY (The University of Memphis), A CHRISTMAS CAROL and MUCH ADO ABOUT NOTHING (Theatre Memphis), and THE COLOR PURPLE (Hattiloo Theatre). Kierra is also a talented filmmaker, recognized for her producing and editing work on documentaries and short films. Her notable projects include STRIKE '68: 1300 MEN, the award-winning JUVENILE, and THE BLUES SOCIETY. She is excited to work with Theatre Memphis again as Janelle Woods.

Nicholas Weaver (Ensemble / u/s The Drifters) is thrilled to be returning to Theatre Memphis. He is a Tacoma, WA native whose recent credits include THE COLOR PURPLE and TAKE THE SOUL TRAIN TO CHRISTMAS with Hattiloo Theatre and A RAISIN IN THE SUN with Theatre Memphis. Professionally, he is a nonprofit leader who collaborates with local nonprofits and executive-level talent to connect them to resources to impact the greater Memphis community. Personally, he is a lover and student of the arts. Although he is new to the theatre world, he is no stranger to music. Having sung background for Jennifer Hudson and various indie artists, he is comfortable behind a microphone. He is excited to be a part of this amazing show and looks forward to performing for you!
IG: Nicktwe

Kortland Whalum (Drifter / Ensemble) Theatre credits include THE COLOR PURPLE; AIDA; A RAISIN IN THE SUN; PORGY AND BESS; THE WIZ; FATHER COMES HOME FROM THE WARS; CATS; HELLO, DOLLY!; and GUYS AND DOLLS. Upcoming film features include FREEDOM'S VILLAGE, produced by The University of Memphis. Kortland has been featured with the Memphis Symphony Orchestra and has sold out several shows at Crosstown Arts' The Green Room. In 2020, Kortland was invited to become a professional member of the Recording Academy (The Grammy Awards).

Mac White (Shirelle / Chiffon / Ensemble / "Uptown" Soloist) is so excited to be working with such an amazing team on such a great show. She recently played Abigail in THE CRUCIBLE at Theatre Memphis and Ensemble in CHARLIE AND THE CHOCOLATE FACTORY at Playhouse on the Square! She would like to thank her friends and family and hopes you enjoy the show!

Cecelia Wingate* (Director) is an award-winning actor and director from Memphis, TN. She holds numerous Best Direction and Best Production Ostrander Awards including those for her work on YOUNG FRANKENSTEIN, THE ADDAMS FAMILY, and THE PRODUCERS, all at Theatre Memphis. Most recently, she was seen onstage at TM as LaNora in CICADA. Cecelia has directed many productions at TM including SILENT SKY, SHERLOCK'S LAST CASE, GUYS AND DOLLS, MAMMA MIA!, 1776, THE 25TH ANNUAL PUTNAM COUNTY SPELLING BEE and SHREK THE MUSICAL. As an actor, Cecelia holds two Chicago theatre Joseph Jefferson nominations and won the JEFF for Best Supporting Actress in a Drama for BYHALIA, MISSISSIPPI. She also holds Best Supporting Actress Ostrander Awards for her work in DISTANCE and CICADA and was nominated for Best Supporting Actress for her work as Mama Morton in CHICAGO at Theatre Memphis. In 2019, Cecelia had the great honor of performing at The Kennedy Center in Washington, DC in a successful run of BYHALIA. "Special thanks to all those who make me look good. It takes a village, and I have the best and brightest tribe! Special love to my production team and this hard working cast." *Proud AEA member.

A very special thank you to Ambassador Worldwide Protection Agency, Amro Music, Debbie Branan and Mid-South Fair, Joe Birch (Carnegie Hall Announcer), The Caspersen Family, Joe Cutrell, Ron Olson (Voice of Dick Clark), Playhouse on the Square, Jeff Robinson, Pete Vescovo

Theatre Memphis has received special funding from the TN Nonprofit Arts & Culture Recovery Fund. Several of our projects are being supported, in whole or in part, by federal award number SLFRP5534 awarded to the State of Tennessee by the U.S. Department of the Treasury.

Theatre Memphis is grateful for this outstanding aforementioned grant administered by the Tennessee Arts Commission.

Beautiful: The Carole King Musical

Is presented through special arrangement with Music Theatre International (MTI). All authorized performance materials are also supplied by MTI. www.mtishows.com

The taking of photographs and the videotaping or other video or audio recording of this production is strictly prohibited. Your cooperation is appreciated. Wheelchair accessible restrooms are located off the north and south lobbies. Hearing reinforced headsets are available at the Box Office.

Please ask the House Manager or an Usher for assistance.

“Best Happy Hour in East Memphis”

Family Owned.
Family Run.



www.magnoliamay.com

Follow us:



718 Mt Moriah Rd • 901.676.8100 for reservations

BEAUTIFUL: THE CAROLE KING MUSICAL CREW

Stage Manager
Chelsea Robinson

Production Team Assistant
Abi Walker

Assistant Stage Manager
Ashley Cunningham

Dance Captain
Jared Thomas Johnson

Stage Crew
James Boyd, Olivia “Via” Caspersen,
Kadarius Clemons, Gordon Ginsburg, Nate Harms,
Ben Marshall, Evie O’Connell, Lucca White

Pin Rail
William DeCotten, Nate Harms

Spot Light Operators
Judith Cardoso, Natalie Chamblin, Amy Settle,
Jess Fuller

Dressers
Amanda Brewer, Julia Gephart, Valerie Henley,
Mary Grace Renfro

Sound Board Operator/Recording Engineer
Reyn Lehman

Mic Wrangler
John Schuessler

Set & Properties Construction
Michael Compton, Jason Eschhofen, David Horne,
Maggie Jackson, Mark Kimberling, Doug Laurie,
Jack Netzel-Yates, Nicole Northington,
Chelsea Robinson, Abi Walker

Costume Construction
Cathy Bascom, Connie Douglass, Amie Eoff,
Julia Horne, Brigette Hutchison, Pam Johnson,
Pam Key, Geri Meltzer, Gracen Rawlinson,
Olivia Scruggs, Ashley Selberg

Lighting Crew
Scott Bryan, Olivia “Via” Caspersen,
Natalie Chamblin, Tarenzo Davis,
Kennedy Jefferson, Marissa Kuder, Mac Reece,
Kaylee Webb

Substitute Crew
Mark Quest Ajoku, Zo Davis, Mason DeVine,
Eli Dycus, Lorraine Hughes, Steve Lopez,
Lydia Smith

Auditions
David L. Allen, Lisa Chang, Amy Mulroy,
Jeffrey Posson, Cathy Richardson

SUPPORT THE ARTS WITH AN ARTS PLATE



tnspecialtyplates.org



90 wine & market *& spirits*

**We have some
of the finest
selections of wine
and spirits in the
MidSouth.**

**Conveniently located
close to Theatre Memphis.
4734 Spottswood / 901.761.1662**



VENICE KITCHEN

Venice-Kitchen.com
368 Perkins Ext.
(901)767-6872

Proud Partners with Theatre Memphis



SEASON 52

Flex Packs save you money!
Creative Partner donors
get seats to every show!
Scan for tickets >



THE LIGHTNING THIEF: The Percy Jackson Musical
Sponsored by International Paper
July 21st - 30th, 2023



EVERYONE AND THIER MOTHER
written & directed by Emily Draffen
August 18th - 27th, 2023



25th ANNUAL PUTNAM COUNTY SPELLING BEE
September 15th - October 1st, 2023



DRACULA: THE BLOODY TRUTH
Regional Premiere!
October 27 - November 12th, 2023



THE BEST CHRISTMAS PAGEANT EVER
Sponsored by Kiwanis of Germantown
December 8th - 17th, 2023



THE CHILDREN by Lucy Kirkwood
January 19th - February 4th, 2024



LITTLE WOMEN by Kate Hamill
Sponsored by Fred & Brandy Miller
March 1st - 17th, 2024



THE CURIOUS INCIDENT OF THE DOG IN THE NIGHT-TIME
April 12th - 28th, 2024



LEGALLY BLONDE The Musical
Sponsored by Sue Olsson
May 31st - June 16th, 2024

Sensory Friendly & ASL Interpreted Matinees thru Full Spectrum Theatre Initiative!

Youth shows, classes & camps year round!

Concert & Event Series: Memphis Symphony, Iris Collective, Dr. Wacky Science, Big River Crossing, & more!

Thank you to all our sponsors especially:

City of Germantown, Arts Memphis, TN Arts Commission, & Donors

ENGAGE ENRICH EDUCATE ENTERTAIN

Germantown Community Theatre

3037 Forest Hill Irene Rd.

901-453-7447

gctcomeplay.org

Whether you prefer your view from the floor or the balcony –
You'll get to experience the **action** of life on campus
without all the **drama** of home maintenance.



Showtime is now at



THE VILLAGE

— at Germantown —

A METHODIST HEALTHCARE AFFILIATE

901-737-4242 | village-germantown.com

7820 Walking Horse Circle, Germantown, TN 38138

Dan McCleary in *Cyrano de Bergerac*, 2023

TENNESSEE Shakespeare CO.

neighboring Shelby Farms Park

2023-24 SEASON

THE TEMPEST
by WILLIAM SHAKESPEARE

THE IMPORTANCE OF BEING EARNEST
by OSCAR WILDE

A STREETCAR NAMED DESIRE
by TENNESSEE WILLIAMS

HAMLET
by WILLIAM SHAKESPEARE

THE JACK JONES CHILDREN'S LITERACY GALA
SALON: BIBLE OF BARBARA KINGSOLVER

Tickets: 759-0604 or tnshakespeare.org



COME EXPERIENCE OUR
THREE COURSE
THEATRE MEMPHIS
PRIX FIXE MENU
AND GET OUT IN TIME
FOR THE SHOW

FOR RESERVATIONS & INFO:
WWW.RESTAURANTIRIS.COM



Upcoming Concerts

Iris Collective:
Small Business Series
Tuesday, Jan 19 | 7pm
Music Box, Germantown

*A lively evening fusing
classical and popular music*

Iris Artist Fellows:
A Lunch Break Concert
Friday, Feb 9 | 12-1pm
Germantown Community
Theatre

Love songs through the ages

Awadagin Pratt:
Piano Prowess
Saturday, Mar 2, 7:30 | GPAC
*Andrew Grams, conducting
Awadagin Pratt, piano
Featuring works by Bach,
Schubert and more*

Awadagin Pratt:
Black in America
Sunday, Mar 3, 3pm
University of Memphis
Harris Hall

*A musical and film experience,
Pay What-You-Wish*

Iris Collective:
**Brass, Percussion
& Photography**
Sunday, May 5 | 3pm
Davies Manor, Bartlett

A free community concert



Visit iriscollective.org for tickets and more information.



TREZEVANT

RETIREMENT REIMAGINED



THE MID-SOUTH'S
PREMIER RETIREMENT
COMMUNITY SINCE 1976

177 NORTH HIGHLAND STREET | 901.515.2800
TREZEVANTMANOR.ORG



2023-2024 Sponsors

Presenting Season Sponsor

First Horizon Foundation/ArtsFirst

Season Sponsors

ArtsMemphis
Tennessee Arts Commission

Production Sponsors and Center Stage Society

AutoZone through Arts Memphis
Bert and Carol Barnett
Belz Foundation through ArtsMemphis
Dr. Jeff Brewer
Jim and Linda Brigance
Gene and Sandra Cochran
Commercial Bank
Creative Aging of the MidSouth
Enterprise Holdings Foundation
FedEx through ArtsMemphis
First Horizon Foundation/ArtsFirst
through ArtsMemphis
Dr. Tom Fortner
Grizzlies Charitable Foundation
International Paper
Jones Bros. Tree and Landscape,
a Davey Company

Juve Salon Spa
Dorothy O. Kirsch
Dr. Mel and Debbie Litch
Jerry and Elizabeth Marshall
McWaters & Associates Realtors
Menke Family Foundation
Marjorie Palazzolo
Dr. Thomas Ratliff
John and Anne Robilio
Edward Sharp
Stage Set
Todd & Co. Estate Sales, Todd Stricklin
Deborah Dunklin Tipton and
Mary Elisabeth Tipton
Jennifer Williams with Hobson Realtors
Winston Wolfe
World Cataract Foundation

The Gene and Sandra Cochran Legacy Society

Anonymous
David and Sarah Allen
Bert and Carol Barnett
Ann DeWar Blecken
Richard and Carole Briscoe
Jerry Chipman
Gene and Sandra Cochran
Keith and Katie Cole
Dabney Coors
Donna Kay Fisher
Bryan and Tracey Zerwig Ford
Charles and Catherine Freeburg

Robert "Bob" Gilbert
Steve and Angela Good
Edwin Harris
Dr. Mel and Debbie Litch
Dr. Michael and Shirley Lupfer
David Lusk and Carissa Hussong
Jerry and Elizabeth Marshall
Fred and Pam Montesi
Seldon and Carolyn Murray
Walter R. Smith
Asan G. Tejwani

THEATRE MEMPHIS ARTISTIC STAFF

Becky Caspersen (Director of Stage Management, Outreach and Volunteer Engagement), a native of St. Louis, was transplanted in Memphis circa 2012 and has never looked back. After 25 years as a free-lance lighting designer/stage manager, 5 years as Production Manager for Opera Memphis, and a 3-time complete failure at retirement, she found a soft landing here at TM in April 2022. She is the wife of one amazing jazz bassist/music director (Carl), mother of three fierce (and artsy) women warriors (Gigi, Anneka, and Via), and the caretaker of 2 Great Pyrenees (which keep her well stocked in lint rollers). Becky is thankful to Theatre Memphis for providing her with a wonderful theatre “work family” and a safe place to hide her chocolate.

Michael Compton (Production Manager/Technical Director) This is Mr. Compton’s 20th season as Production Manager for TM. He earned his BS in Technical Theatre from Illinois State University and was previously the Technical Director for the Players Theatre in Sarasota, FL. Ostrander Awards include lighting design for THOROUGHLY MODERN MILLIE, the Behind the Scenes Award for the 2006-2007 season, and the 2021 Janie McCrary Putting it Together Award.

Amie Eoff (Resident Costume Designer) is pleased to be the Resident Costume Designer at TM. From 2012-2014, she served as the Costume Shop Supervisor at Rhodes College, and in 2012, she completed her fourth season as the Resident Costume Designer for Circuit Playhouse. During her career, Amie has been nominated for several Ostrander Awards for Best Costumes and won for PRESENT LAUGHTER; BLOODY, BLOODY, ANDREW JACKSON; THE PRODUCERS; 1776; SHREK THE MUSICAL; SIDE SHOW; CATS; and RAGTIME. She holds an MFA in Costume Design from the University of Southern Mississippi. She has also worked on cruise ships with Jean Ann Ryan Productions and has designed for the Hangar Theatre in New York.

Jason Eschhofen (Resident Sound Designer) has a BA in Voice Performance and Studio Recording Technology from Bowling Green State University and an MM in Voice Performance from the University of Memphis. Some of his favorite credits include THE 25TH ANNUAL PUTNAM COUNTY SPELLING BEE (Theatre Memphis, music direction); RUTHLESS! THE MUSICAL (Theatre Memphis, music direction); DAYS OF RAGE (Playhouse on the Square, sound design); and MURDER FOR TWO (Playhouse on the Square, Marcus Moscovicz, co-music direction, sound design/recording/engineering). Additionally, Jason has been the Music Director for the High School Musical Theatre Awards at the Orpheum since 2017 and the Music Director for the Ostrander Awards since 2019. He has won Ostrander Awards for Best Musical Direction (NINE, University of Memphis), Best Sound Design (URINETOWN THE MUSICAL, Theatre Memphis), and the Larry Riley Rising Star award.

Maggie Jackson (Assistant Technical Director) is excited to be joining Theatre Memphis for its 101st season. After the honor of being Stage Manager for RAGTIME, she is thrilled to continue her work with this wonderful community as the Assistant Technical Director. She would like to thank the TM staff, directors, and the cast and crew for the opportunity to be a part of such an amazing production and season. Lastly, she would like to thank her family and friends for all their love and support.

Jack Netzel-Yates (Resident Scenic Designer/Properties Master) received his BFA in Theatrical Design and Production from Oklahoma City University in 2010. Now entering his tenth year with TM, he has previously worked for venues such as The Kalamazoo Civic Theatre, Light Opera Oklahoma, Oklahoma Shakespeare in the Park, City Rep., Ballet Memphis, and Tennessee Shakespeare Company. Jack has designed over 67 productions for TM, received 49 Ostrander Award nominations, and won Best Scenic Design for his work on THE HEIRESS (2014), THE PRODUCERS (2015), BEAUTY AND THE BEAST (2016), HAIRSPRAY (2018), CATS (2019), THE SECRET GARDEN (2021), and URINETOWN THE MUSICAL (2021). Most recently, Jack received the American Association of Community Theatre Award for Scenic Design of the Decade for THE DROWSY CHAPERONE (2018). He would like to thank his friends and family for all of their continued love and support, especially his husband, Terry.

Nicole Northington (Resident Lighting Designer) is excited to join Theatre Memphis for her first season as the Resident Lighting Designer. She began participating in technical theatre as a freshman in high school and went on to receive her BA in Dramatic Arts in 2019 from Trevecca Nazarene University in Nashville, Tennessee. During her time in Nashville, she worked with many organizations including Nashville Children’s Theatre, TPAC, Nashville Opera, and more. After graduating, she moved to Memphis in August 2019 to complete three seasons at the Circuit Playhouse. Some of her favorite designs include TORCH SONG, SONGS FOR A NEW WORLD, THE GOODBYE LEVEE, and NAT TURNER IN JERUSALEM. This and every show she does is dedicated to her late father, LJ Northington. For every day he drove her to play rehearsal to every show he saw, his support is what got her here today.

Chelsea Robinson (Stage Management, Outreach and Volunteer Engagement Manager) has been part of the Theatre Memphis family since 2008 where she has been stage managing, working backstage, volunteering, and performing for many years and was a member of the ShoWagon acting troupe during the 2012-2013 season. She received her BFA in Design and Technical Production from The University of Memphis and received the Larry Riley Rising Star Award at the 2015 Ostrander Theatre Awards in Memphis. Chelsea is so excited to work with the incredible staff at Theatre Memphis and all of the amazing casts, crews, stage managers, and volunteers for the upcoming seasons.

THEATRE MEMPHIS ARTISTIC STAFF

Karon Samuels (Outreach and Education Programs) currently serves as Program Coordinator for The Cooler, Outreach Coordinator for Memphis Black Arts Alliance, and Education and Outreach Associate with Theatre Memphis. She also serves as a Read2Lead Theatre Instructor with Memphis Dream Center, a local non-profit that seeks to empower Memphis youth by encouraging a love of reading. A proud graduate of Howard University's Fine Arts program, Karon has spent much of her career elevating and celebrating black storytelling and marginalized voices, working with local art nonprofits that support her personal mission of art accessibility and equity. She is also an artist in her own right, gracing stages in musicals, plays, spoken word sets, and operas in Memphis and the DMV area. Karon is proud to play her part in creating a unique and sustainable creative ecosystem in Memphis. She hopes to see the creatives in our city leave a lasting, socially impactful influence in modern media, both onstage and behind the scenes.

Ashley Selberg (Costume Shop Manager) was born and raised outside of Memphis, TN. She attended O'More College of Design and received a BFA in Fashion Design. While in college, she interned at Nashville Repertory Theatre and fell in love with costuming. After graduating, she became a costume technician for Ballet Memphis under head designer Bruce Bui. Since then, she has worked for other theatres and film production companies on shows like BLUFF CITY LAW and WOMEN OF THE MOVEMENT. In 2022, she won the Ostrander Award for Best Costumes and Best Wig and Makeup for THE SECRET GARDEN at Theatre Memphis. She also competes in Cosplay, winning Best in Show at MTAC 2018 and Best Group at MTAC 2022. "Costuming is my passion; there is just something magical about helping an actor, dancer, or everyday person feel special by creating the perfect costume that brings everything together."

Abi Walker (Stage Management, Outreach & Volunteer Engagement Assistant) Having always been dramatic, Abi surprised no one when she chose to study theatre, first at Northwest Community College and then Mississippi University for Women. She worked summers at Carey Dinner Theatre, was a carpentry intern at Playhouse on the Square, and recently produced a feature film with her husband. Some of her favorite credits include backstage crew for PRISCILLA: QUEEN OF THE DESERT (Playhouse on the Square), Juliet in ROMEO AND JULIET (NWCC), Assistant Director for WAKERS: AN AUDIO DRAMA (Bedrock Productions), and Executive Producer for TWENTIES (Clandestine Pictures).

THEATRE MEMPHIS EXECUTIVE COMMITTEE

PRESIDENT	Jim Briganche	BUSINESS ADVISOR	Gene B. Cochran
PRESIDENT-ELECT	Joe Lackie	IMMEDIATE PAST PRESIDENT	Dabney Coors
VICE-PRESIDENT	Eric Eurich	PAST PRESIDENT ADVISOR	Jerry Marshall
VICE-PRESIDENT	Jared Thomas Johnson	PAST PRESIDENT ADVISOR	Sarah Norton
SECRETARY	Janice Hall	PAST PRESIDENT ADVISOR	Seldon Murray
TREASURER	Bryan Ford	EXECUTIVE COMMITTEE EMERITUS.....	Kitty Cannon

BOARD OF DIRECTORS

Toney Armstrong	Janice Hall	Lynn McDonald	Walker Sims
Dr. Anita Arnold	Pamela Hauber	Elizabeth Ann	Jaclyn Suffel
Sally Baker	Dr. Shawn Hayden	Menke-Jumet	Deborah Dunklin Tipton
Pat Beech	Karen Johnston	Kim Mullins	Rev. Dr. Niambi Webster
Jared Braddy-Haney	Jude Knight	Richard Myers	Josh Whitehead
Katie Cole	Janette Krauch	Dr. Keith Norman	
Karun Gadiparthi	Susan Labovitz	Elizabeth Perkins	
Betha Gill	Meghan Lewis	Jim Renfrow	
Heather Grosvenor	Mark Luttrell	Mark Ruleman	

ACTIVE PAST PRESIDENTS

Bert Barnett	James A. Frommel	Seldon Murray
Dan Conaway	Randall Hartzog	Sarah Norton
Gene B. Cochran	Jerry Marshall	Scott Pioreck

STAGE SET ELECTED GOVERNING BOARD

President	Annelle Roachell	Treasurer	Pat Winburne
First Vice-President	Vicki Walling	Assistant Treasurer.....	Sandy Chandler
Second Vice-President.....	Jo Hume	Recording Secretary.....	Sandra Ashley
Third Vice-President.....	Marge Palazzolo	Corresponding Secretary	Janice Oliver

THEATRE MEMPHIS FRONT OF HOUSE STAFF

House Managers

Claudia Bacigalupo, Daniel Myers-Ray,
Linda White

Bartenders

Tamika Burris, Natalie Chamblin,
Jennifer Gresham, Marc Holder, Daniel Myers-Ray,
Julianne Schmidt, Jennifer Steinmetz

Security

Claudia Bacigalupo, Daniel Myers-Ray,
Jon Myers-Ray, Nick Settle, Tobby Watson

Ushers

Melissa Andrews, Anita Angelacci, Martha Angelo,
Angela Aultman, Catherine Austin, Anika Bhatt,
Sue Binnie, Marlinda Bolton, Sandy Bolton,
James Boyd, Shirley Burl, Kathy Caradine,
Patty Carreras, Sandra Chandler, Lee Clarke,
Frances Coard, Judy Coburn, Jacqueline Collins,
Taylor Comans, Calla Coonin, Isabella Coons,
Lisa Curry, Jane Curtis, Helen Davis, Russell Day,
Sharon Day, Kristin Dickerson, Jeanne Ellett,
Mason Erdman, Ryan Erdman, Frances Fabian,
Jon Fabian, Brandon Fleeer, Bryan Fleeer, Rose Fleeer,
Linda Forbess, Annie Freres, Brad Gabriel,
Linda Gabriel, Ashley Grandberry,
Carlandis Grandberry, Carlandis Grandberry, Sr.,
Shania Grandberry, Jessica Greer, Josslyn Greer,
Heather Griffin, Koih Griffin, Mary Kirksey

Griffin, Daniel Harris, Diane Harvey,
Kimberly Haynes, Maryann Hendricks,
Robert Henegar, Dawnell Hindelang,
Sherry Hinton, Tamecca Hobbs, Ronald Hobbs,
Jr., Tenitia Hobson, Alan Hopkins, Missy Hopkins,
Josalyn Hoyle, Donna Hulbert, Cheryl Jefferson,
Chiquita Jefferson, Kennedy Jefferson,
Caleb Jeffries, Stacy Jeffries, Andre Johnson III,
Tamara Johnson, Henrietta Jones, Jerry Jones,
Rhylea Jones, Mary Anna Kalb, Meghan Kallaher,
Alisa Karney, Aryanna Lambert, J Lavender, Linder
Lemmons, Kathy Lewis, Lori Lipscomb, Claire
Little, Kathy Lovett, Lisa Matlock,
Teresa McCall, Ginger McDugle, Jean McElrath,
Lisa McFarland, Mandy McKay, Tracey Mckinzie,
Alvin Miller, Chris Miller, Lynette Miller,
Hannah Moore, Courtney Murray, Jon Myers-Ray,
Velma Nelson, Jimmy Nguyen,
Lyncola Odell-Seaberry, Alisa Oriaku,
Kimberly Parks, Lucas Pederson, Justine Piontek,
Priscilla Porter, Charles Ratcliff, Adrian Rayo,
Barbara Rea, Kertese Richard, David Riegel,
Amy Rush, Adam Sanders, Martha Sanders,
Kaylyn Saulsberry, Marlena Shorter,
Marlinda Shorter, Nicole Smith, Xander Smith,
Megan Spillyards, Sabrina Stokes, Robert Sutton,
Aisha Swauncy, Shirley Toler, Renee Topham,
Oscar Townsend, Linda Weiss, Caren Whitaker,
Gordon Whitaker, Kelli Wiatr, Ann Wieties,
Judy Wiggins, Tamara Young, Alice Zalon



**Comfort
Keepers.**

Elevating the
Human Spirit™

In-Home Care to Help Seniors Thrive

Our empathetic, in-home care helps seniors thrive while living independently. Whether your loved one needs medication reminders, transportation to appointments, or personal care, Comfort Keepers is here to provide support and build meaningful relationships.

In-Home Care Services

- Personal care
- Companionship and housekeeping
- Dementia and Alzheimer's care
- Respite care
- Safety solutions

901-207-8209

Home + Life + Care | ComfortKeepers.com

Comfort Keepers of the Mid-South, 5668 S Rex Rd #200, Memphis, Tennessee 38119

© 2022 CK Franchising, Inc. An international network where most offices are independently owned and operated.



COMPUTER
HARDWARE
SERVICES

*For all your computer,
hardware and software needs.*

- On site service and repair available
- Cabling of your home or business for phone and network (BICSI and RCDD)
- Offsite backup
- Check us out online at www.computerhardwareservices.com

662-404-6177

SWEET NOTES

from Memphis

OVER 120 SWEET YEARS



Dinstuhl's

Fine Candies Since 1902



Memphis, TN | 800.355.0358 | dinstuhls.com
Burlwood · Germantown · Collierville · Downtown · Pleasant View

Season Presenting Sponsor for the 2023-24 Season



ArtsFIRST

Art lifts our spirits and expands our horizons. Because art plays a vital role in a healthy community, expressing the diversity within our common humanity, the First Horizon Foundation is a long-time supporter. As one of our signature investments, ArtsFirst is a program to promote excellence and enrichment in the arts in Memphis. This new approach allows us to partner with ArtsMemphis in the grant-making area while ensuring a continued significant impact in the community.

THANK YOU FIRST HORIZON FOUNDATION/ARTSFIRST FOR TRUSTING THEATRE MEMPHIS AND RECOGNIZING THE IMPORTANT ROLE THEATRE MEMPHIS PLAYS IN THE COMMUNITY

Theatre Memphis Applauds Our Contributing Members

Theatre Memphis gratefully acknowledges the generosity of the individuals, corporations, and foundations that have invested in our theatre. You are the reason we have enjoyed a rich 102-year history as one of the most acclaimed community theatres in the nation, and we are most grateful for you.

Ticket sales do not cover the full costs of our productions and programs. Your contributions through Production Sponsorships, Center Stage Society, Line Producers, and Contributing Subscribers make it possible to present productions of the highest quality. Annual contributions and support will ensure our future.

Please accept our sincerest appreciation for your outstanding support. If we have made an error or if we have not listed your name or company as you wish it to appear, please call Kaitlin at 901-682-8601.

Life Members

Gene & Sandra Cochran
Janie McCrary

Producers

Dr. Anita Arnold
Bert & Carol Barnett
Gary Beard & Joe Lackie
Pat & Charles Beech
Jim & Linda Brigrance
Kitty Cannon & Jim Waller
Katie & Keith Cole
Foy Coolidge
Bryan & Tracey Ford
Kim & Mabry Ford
Dr. Tom Fortner
Martha & Jerrold Graber
John & Janice Hall
Pamela Hauber
Shawn Hayden &
Connor Parris
James R. Humphreys
Dorothy O. Kirsch
Jude Knight
Janette "JJ" & Bobby Krauch
Ronald Kwoka
Louise Levin
Dr. Mel & Debbie Litch
Jerry & Elizabeth Marshall
Ron Martin & Curtis Jones
Missy McClendon
James & Veronica McCraw
Vicki & Jim McCullough
Lynn McDonald
Rona Mogil & Douglas Green
Seldon & Carolyn Murray
Richard Myers
Dennis & Sarah Norton
Barbara & Allie Prescott
Cathy & Harold Richardson
Rebecca Osborne Rogers
Mark & Mary Ruleman
Bill Short
Shannon Sparks
Richard Tanner
Asan G. Tejwani
Melissa Walker &
Kinon Keplinger
Bobby & Nancy Walton
Josh Whitehead
Camilla Wilson

Stars

David L. Allen
Dr. Phillip &
Mrs. Carol Aronoff
Gail Berkowitz
Dot & Stanley Bilsky
Jerry & Marjorie Bowman
Andy & Becky Burken
Jennifer Champion
Matthew & Sara Clark
Dr. & Mrs. David Deneka
Michael & Tricia DeShazo
Miriam Epstein
Patricia Fletcher
Barry & Lihan Frager

Frager Law Firm, P.C.
Howard Glatstein
Carol Greenwald
David Holt
Anita Howald
Jerry Huff
Randi Johnson
Diana Jones
Sandra Jones
Susan Labovitz
Carol Levy
Robert & Lola Llewellyn
Majestic Wine & Liquor
William & Marcia Mathis
Scott & Carol Mednikow
Rodgers Menzies
Brett & Margaret Millikin
Dr. Brent & Kimbrough Mullins
Cynthia Nash & Angela Cabrera
Jim & Betsy Pentecost
Jeff & Robin Pohlman
Missy Reeder
Joanne Rhodes
Lindsy & Jackson Roberts
Margaret Roch
Cynthia & Marco Ross
Kevin Rushing
Edward Sharp
Pat & Kim Siano
Bennett Wood

Leading Players

Bill & Susan Andrews
Katie Barzizza
Clifford & Olive Bird
Mary Bowen
James Campbell
Teresa & Dennis Champion
Carroll Clark
Kim Constantinides
Jeff & Anne Coole
Jim & Pat Corbitt
EJ Crowley
Mark & Susi Edwards
Susan Ferkin
Melissa Fullerton
Ray & Betha Gill
Henry Greinke
John & Judy Griesbeck
David & Pamela Hallin
Hanks/Townsend Family
Greg & Lynn Harrison
Diane Harvey
Amy Hess
Grace E. & Frank B. Howell
Joyce Howell
Susan Jennings
Brandon Doty & Brian Jobe
William & Barbara Johns
Krista & David Jones
Robert Jones
Trina L. Jones
Andrew Jordan
William Key
Chuck Kvasnicka
Kennison Kyle
James & Susan Lattimore

Amy Newsom
Cynthia Powers
Sheppie T. Quinn
Harry & Flora Samuels
Philip Schaeffen
Gus Schroeder
Cindy Scott
William & Courtney Segal
Hunter Sinclair
Linn Sitrler
Ron & Linda Sklar
Charles & Mary Stewart
Tammy Sullivan
Tim C. Tatum
Asan G. Tejwani
Keith & Pamela Therrell
Mike Turpin
Ellen I. Watson
Lucy & John Wepfer
Billie Anne Williams
Cindy Williams
David Willmott
Phillip & Melinda Winchester

Supporting Players

Margaret Bean
Breen Bland & Jeanie Mercer
Carole & Jeff Blankenship
Keith Brewer
Bob & Beverly Buchalter
Nancy Butcher
Virginia Collier
Nora & Dan Conaway
Luci Cromer
Larry Denman
JJ & Dick Doughtie
Landry Duvall
Marilyn & Mike Ellicott
Gammill Family
Carol Geller
Dana Goode
Nancy & Art Graesser
Joyce & Fred Graflund
Pamela Guasco
Alisa Harber
Adam Hill
Steve & Charlotte Icardi
Natalie & Jimmy Jalenak
Elizabeth Kirkland
Ronnie Kirsch
Gail Lewis
Nouth Magdovitz
Joy Maness
Debbie & John Monroe
Andrew J. Morgret
Linda & Ellis Neufeld
Carl Panetta
Linda & Billy Patterson
Ann L. Powell
Amanda Prislovsky
Dr. Robert & Linda Serino
Chris & Suzanne Sheffield
Mel & Donna Skees
Betsy Tedder
Jo Vail
Marcia Ann & Michael Weiss

ACKNOWLEDGMENTS

HONORARIUMS

Marne Anderson and Charles Warner
from Don and Elizabeth Scott

Mr. and Mrs. Tom Baker *from Don and Elizabeth Scott*
Mrs. Dodie Calil *from Don and Elizabeth Scott*
Greg Campbell and Greg Baudoin
from Don and Elizabeth Scott

Mr. and Mrs. Bobby Carson *from Don and Elizabeth Scott*
Becky Caspersen, Chelsea Robinson, and the Education Department *from Susan Moskop*
Mr. and Mrs. Clarence Chapman, Jr.
from Don and Elizabeth Scott

Mr. and Mrs. Bill Coble *from Don and Elizabeth Scott*
Mr. and Mrs. Coleman Connell
from Don and Elizabeth Scott
Mr. and Mrs. R. Kemp Conrad
from Don and Elizabeth Scott

Ms. C. Dabney Coors *from Veronica and Brett Batterson, Don and Elizabeth Scott, Deborah Dunklin Tipton and Mary Elisabeth Tipton*
Mr. and Mrs. Chris Cornaghe
from Don and Elizabeth Scott

Mrs. James S. Cox *from Don and Elizabeth Scott*
Mr. and Mrs. Lester Crain, Jr.
from Don and Elizabeth Scott
Courtney and Hoppy Dickinson
from Don and Elizabeth Scott
Bill and Michelle Dunavant
from Don and Elizabeth Scott

Mr. and Mrs. Junius Ellis *from Don and Elizabeth Scott*
Mr. and Mrs. Ray Gill *from Don and Elizabeth Scott*
Davor, Larisa, Vedran, and Elle Gjivoje
from Don and Elizabeth Scott
Dr. and Mrs. Neumon Goshorn
from Don and Elizabeth Scott

Dr. Baker Gross and Dr. Hunter Rittenberry
from Don and Elizabeth Scott
Shawn Hayden *from Mary Rambo*
Joan and Mike Heflin *from Don and Elizabeth Scott*
Ms. Buzzy Hussey and Dr. Hal Brunt
from Don and Elizabeth Scott

Kevin and Sherri Kimery *from Don and Elizabeth Scott*
Mr. and Mrs. George Klepper III
from Don and Elizabeth Scott

Mr. and Mrs. Scott Ledbetter *from Don and Elizabeth Scott*
Mr. and Mrs. Jon Levingston *from Don and Elizabeth Scott*
Debbie Litch *from Carol Katz, Deborah Dunklin Tipton and Mary Elisabeth Tipton*

Dr. Mel and Debbie Litch *from Deborah and Cheddar Sharp*
Kim and Collie Lowrance *from Don and Elizabeth Scott*
Mr. and Mrs. Jerry Martin *from Don and Elizabeth Scott*
Mr. and Mrs. Martin McNamara
from Don and Elizabeth Scott

Mr. and Mrs. Fred Montesi *from Don and Elizabeth Scott*
Mr. and Mrs. Bruce Moore *from Don and Elizabeth Scott*
Mr. and Mrs. Harbert Mulherin
from Don and Elizabeth Scott

Lisa and Randy Noel *from Don and Elizabeth Scott*
Gwen and Penn Owen *from Don and Elizabeth Scott*
Mrs. Tony Parker *from Don and Elizabeth Scott*
Chris and Helen Patterson *from Don and Elizabeth Scott*

Mr. and Mrs. John Pettey III *from Don and Elizabeth Scott*
Mr. and Mrs. Raymond Pirtle, Jr.
from Don and Elizabeth Scott
Mr. and Mrs. John Robert Pitts
from Don and Elizabeth Scott

Mr. and Mrs. Jim Robbins *from Don and Elizabeth Scott*
Dr. and Mrs. Cooper Sandusky
from Don and Elizabeth Scott

Christina Wellford Scott *from Deborah Dunklin Tipton and Mary Elisabeth Tipton*
Bill Short *from William Short*
Nancy Welsh Smith *from Don and Elizabeth Scott*
Mr. Milton Smylie *from Don and Elizabeth Scott*
Mr. and Mrs. Gordon Stanfield
from Don and Elizabeth Scott

Baylor and Howard Stovall *from Don and Elizabeth Scott*
Mrs. Elise Stratton *from Don and Elizabeth Scott*
Mrs. Susan Sutton *from Don and Elizabeth Scott*
Mr. John Tackett *from Don and Elizabeth Scott*
Mr. Murray Tate *from Don and Elizabeth Scott*
Mrs. James A. Thomas *from Don and Elizabeth Scott*
Mr. and Mrs. Sanford Thomas
from Don and Elizabeth Scott

Deborah Dunklin Tipton and Mary Elisabeth Tipton
from Don and Elizabeth Scott

Mr. and Mrs. Michael Turley *from Don and Elizabeth Scott*
Mr. and Mrs. Bryan Varner *from Don and Elizabeth Scott*
Mrs. Virgil Vaughn *from Don and Elizabeth Scott*
Mr. and Mrs. Patrick Walton and Family
from Don and Elizabeth Scott


Mr. and Mrs. Thomas Jackson Weaver III
from Don and Elizabeth Scott
Mr. and Mrs. Alex W. Wellford
from Don and Elizabeth Scott
Mr. and Mrs. John Kellogg Wilbourn
from Don and Elizabeth Scott

Vance and Willis Willey *from Don and Elizabeth Scott*
Mr. and Mrs. Warfield Williams
from Don and Elizabeth Scott
Barbara and Lewis Williamson
from Don and Elizabeth Scott
Mr. and Mrs. Russell Williamson
from Don and Elizabeth Scott

Mr. and Mrs. Daniel Wood *from Don and Elizabeth Scott*
Mr. and Mrs. William M. Yandell
from Don and Elizabeth Scott

MEMORIALS

Barry Fuller
from Kitty Cannon and Jim Waller, Marilyn Cheeseman, Carol Katz, Louise Levin, Eric Lupfer and Victoria Davis, Edward Sharp
Dan Norton
from Dr. Mel and Debbie Litch
John Rone
from Marilyn Cheeseman, Frances Foster, Bill Short
Ann Sharp
from Frances Foster
Malcolm Sharp
from Dr. Mel and Debbie Litch, Edward Sharp
Claire Thompson
from Walter M. Thompson II
Eric Thompson
from Walter M. Thompson II
Michael Weiss
from Marcia Weiss
Bennett Wood
from Bryan and Tracey Ford, Carol Katz

A close-up, side-profile photograph of a woman with glasses playing a piano. She is wearing a black top with gold beaded details on the neckline and sleeves. Her hands are positioned on the piano keys. The background is dark, and the lighting highlights her hands and the keys. The text 'WE HELP MAKE ART MORE' is overlaid in a light orange, sans-serif font at the top, with the word 'dramatic' written in a large, elegant, white cursive script below it.

WE HELP MAKE ART MORE

dramatic

We don't make the art, but with your contributions, we make the art more dramatic. This year, we were proud to have granted \$3.4 million to 63 arts organizations and hundreds of individual artists through strategic partnerships and new avenues to support people, programs, and operations.

ARTSMEMPHIS.ORG

ARTSmemphis®


Black Theater Nerd

*Ease on
down to*

PLAYBILLS
TRIVIA
PLAYLISTS & more!

cmgeary568@gmail.com

Scan to follow
on Instagram



@BLACKTHEATERNERD




You will never again have to
pay full price for groceries.



Just ½ block East of Theatre Memphis

[LIBRO]
AT LAURELWOOD



387 Perkins Extended
LibroLaurelwood.com
901.800.2656



BILTMORE®
by Raymond Mazza



Exclusively in Memphis at




4646 Poplar Avenue, Suite 109, Memphis, TN 38117 • 901.682.5471



TICKETS ON SALE NOW AT ORPHEUM-MEMPHIS.COM



FALL IN LOVE ALL OGRE AGAIN!

MAY 31-JUNE 2 • ORPHEUM

COME
FROM
AWAY

TRUE STORY. HIT MUSICAL.

JUNE 21-23 • ORPHEUM

FIND YOUR PLACE AT



PLAYHOUSE

ON THE SQUARE

FOR TICKETS: WWW.PLAYHOUSEONTHESQUARE.ORG - BOX OFFICE: (901) 726-4656

FALL 2023

Don't Hydroplane
July 7th - 23rd

The Prom
August 18th - September 17th

The Great Wine Performances
August 22nd

Fat Ham
September 15th - October 8th

Schoolhouse Rock, Live!
November 10th - December 22nd

The Wizard of Oz
November 17th - December 22nd

Who's Holiday!
November 24th - December 22nd

SPRING 2024

You're A Good Man, Charlie Brown
March 15th - April 13th

Bob Marley's Three Little Birds
March 19th - May 17th

POTUS
March 22nd - April 14th

46th Annual Original Art Auction
April 20th

SUMMER 2024

Your Arm's Too Short To Box With God
April 26th - May 19th

The Hot Wing King
May 10th - June 2nd

Catch Me If You Can
June 14th - July 14th

WINTER 2024

Greater Illinois
January 12th - 28th

Charlie and the Chocolate Factory
January 19th - February 18th

The Lehman Trilogy
January 26th - February 11th

Unified Professional Theatre Auditions
February 2nd - 5th





Whitehorn
Tankersley &
Davis, PLLC

CERTIFIED PUBLIC ACCOUNTANTS

670 OAKLEAF OFFICE LANE / MEMPHIS, TENNESSEE 38117-4811 / (901) 767-5080 / (901) 767-5263 FAX

Proudly supporting
the Arts in Memphis



PAULSEN
PRINTING COMPANY



BRINGING **COLOR** TO **LIFE**
901-363-5988

TOPS BAR-B-Q

MEMPHIS
Since 1952 **BEST**

Famous Smoked Ribs

Cheeseburgers

Pork Shoulder

Beef Brisket

Fire-Braised Chicken

And We Cater Too

901.667.8677

EMBASSY APARTMENTS

Luxury and Location



Offering one, two, and
three bedrooms

For more information

901.685.8020

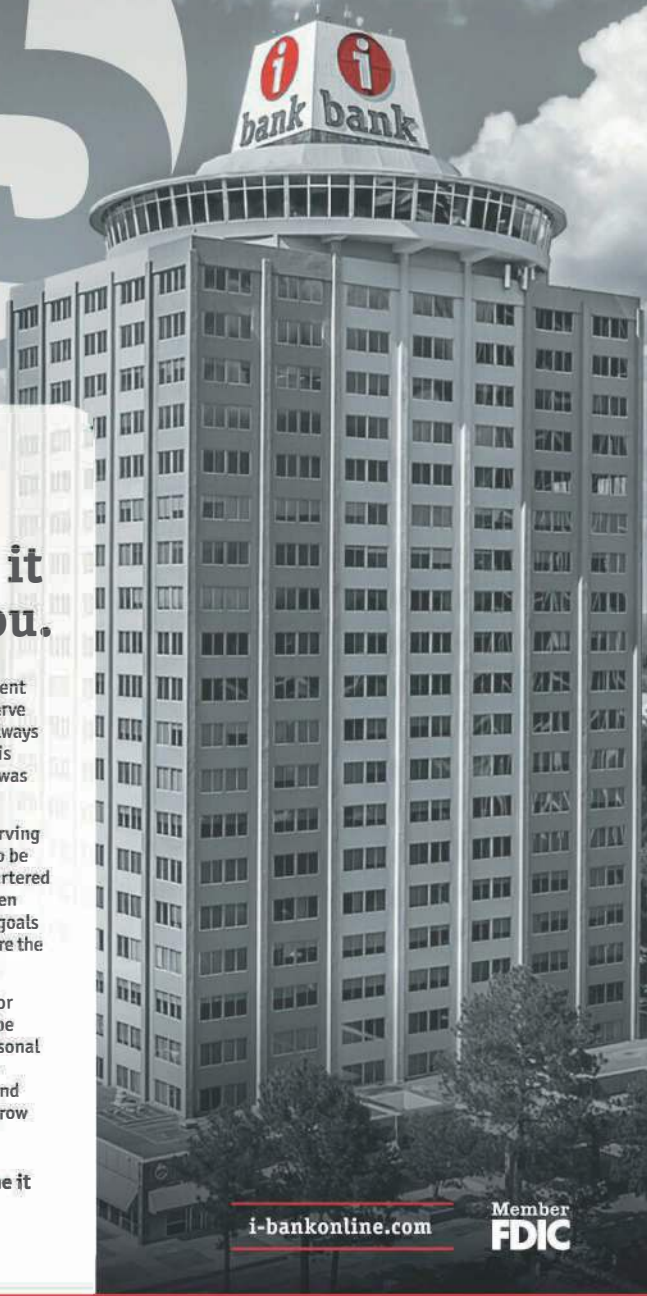
Utilities Included

See our floorplans @
embassyaptsmemphis.com

505 South Perkins Rd.
In the Heart of East
Memphis

www.embassyaptsmemphis.com

25 years



i couldn't have done it without you.

In 1998, we started Independent Bank with a simple goal—to serve our customers heroically. We always knew at the end of the day, this business was not about us, it was all about you.

As we celebrate 25 years of serving you heroically, we are proud to be the largest Memphis-headquartered community bank. You have been our priority as we grew, your goals have been our goals, and you are the reason for our success.

So, here's to you! Thank you for giving us the opportunity to be part of your business and personal dreams. Thank you for trusting us with your financial needs, and giving us the opportunity to grow alongside you.

We truly couldn't have done it without you!

Your friends at **i-bank**

i-bankonline.com

Member
FDIC



independent bank™