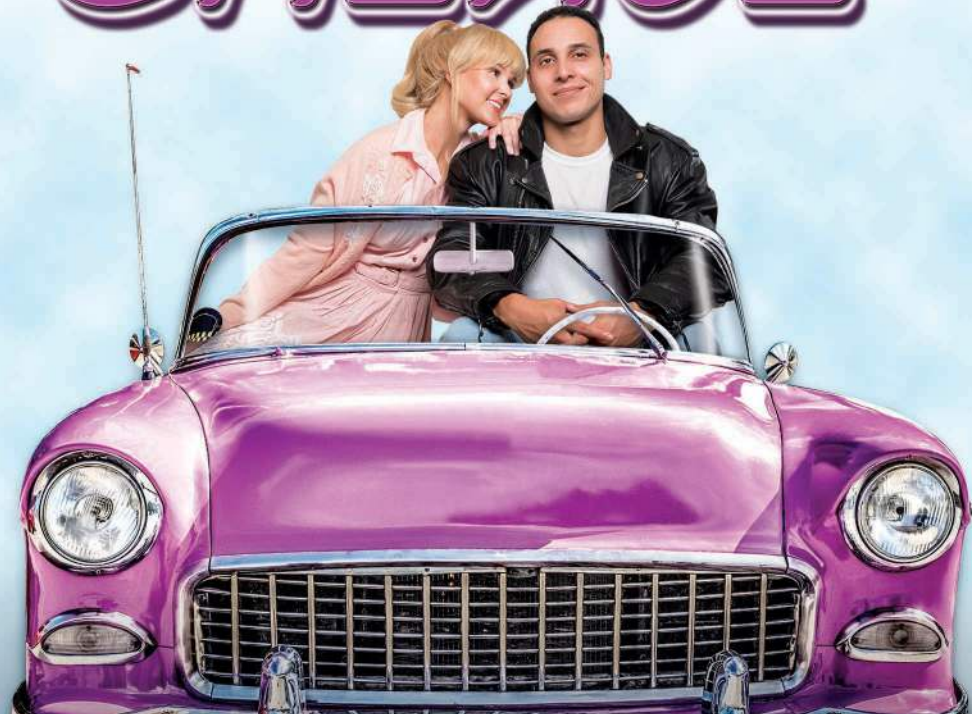


GREASE



THEATRE MEMPHIS presents "GREASE"

Book, Music, Lyrics by **TIM JACOBS** and **WARREN CASEY** with additional Movie Music and Lyrics by **JOHN FARRAR**, **LOUIS ST. LOUIS**, **SCOTT SIMON** and **BARRY GIBB**

Director and Choreographer **WHITNEY BRANAN*** ▪ Music Director **JEFFERY BREWER**

Sponsored by **EDWARD SHARP** with additional support by **JIM & LINDA BRIGANCE** and **JOHN & ANNE ROBILIO** ▪ Media Sponsors **WKNO 91.1FM** and **MEMPHIS FLYER**

AUG16-SEPT8

Generous support provided by



FIRST
HORIZON
FOUNDATION

ARTSMEMPHIS



TENNESSEE
ARTS
COMMISSION

THE JENIAM
FOUNDATION

WKNO-FM

Memphis Flyer



THEATRE MEMPHIS in the LOHREY THEATRE



TICKETS 901.682.8323 | ONLINE theatrememphis.org

*A member of the Stage Directors and Choreographers Society

© 2024

Family Owned and Operated
Over 35 Years!



**2 of America's Favorite Brands
in one great location.**



wolfchasehonda.com

wolfchasenissan.com



Enjoy
the
Show!



Vol. CIV, No. 1
2024-2025
August 16-September 8, 2024

AFFILIATIONS

American Association of Community Theatres
ArtsMemphis
Southeastern Theatre Conference
Tennessee Arts Commission
Tennessee Theatre Association

THEATRE MEMPHIS STAFF

Debbie Litch, *Executive Producer*

Administrative Staff

Lisa Hall-Hayes, *Operations Manager*
Randall Hartzog, *Director of Marketing/
Communications*
Kaitlin Brucker, *Office Manager/Usher Coordinator*
Lisa Chang, *Finance Manager*
Christina Hendricks, *Senior Box Office Assistant*
Sharri Reid, *Box Office Assistant*
Julia Truelove, *Box Office Assistant*
Molly Waugh, *Box Office Assistant*
Claudia Bacigalupo, *House Manager*
Natalie Chamblin, *House Manager*
Daniel Myers-Ray, *House Manager*
Abi Wiggins, *House Manager*
Johnny Gaither, *Building & Grounds*

Production Staff

Michael Compton, *Production Manager/
Technical Director*
Becky Caspersen, *Director of Outreach, Education,
Volunteer Engagement & Stage Management*
Gary Beard, *Music Consultant*
Amie Eoff, *Resident Costume Director*
Jack Netzel-Yates, *Resident Scenic Designer/
Properties Master*
Nicole Northington, *Resident Lighting Designer*
Jason Eschhofen, *Resident Sound Designer*
Ashley Selberg, *Costume Shop Manager*
Brigette Hutchison, *Costume Shop Technician*
Maggie Jackson, *Assistant Technical Director*
Chelsea Robinson, *Stage Management & Programs:
Tech Academy, Volunteers & Daytime A Christmas
Carol*
Abi Wiggins, *Outreach & Programs: TM Prep,
SkillSet & Festivals*
Karon Samuels, *Education & Programs: Read to
Relate & Women in the Arts*

Box Office: 901.682.8323

Advertising: 901.682.0264

Poster/Cover Created by Missy McClendon
Promotional and Production Photos by Steve Roberts



 **THEATRE MEMPHIS**

Always Entertaining

2024-2025 Theatre & Dance SEASON

**Edward and Bernice
Humphreys Theatre Building**
3745 Central Ave.

Twelfth Night
by William Shakespeare
Sept. 26-29

Dance Concert
A Faculty Dance Concert
Oct. 25-26

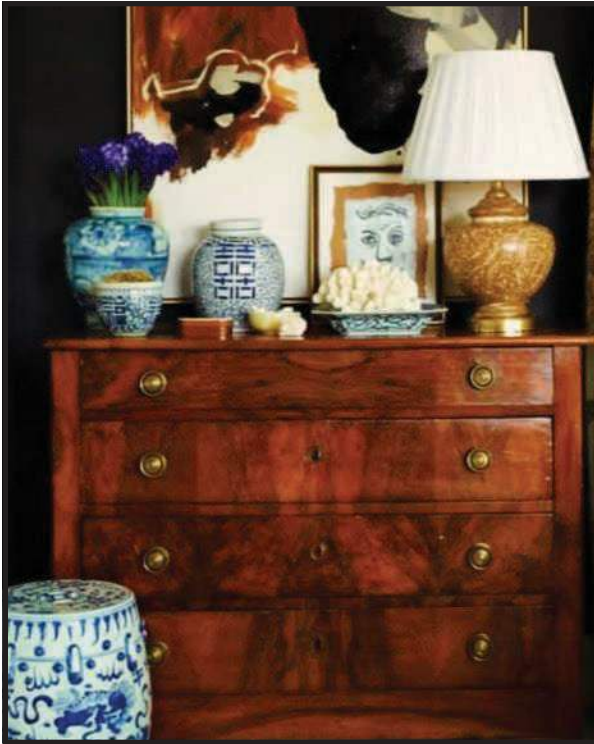
Ride the Cyclone
by Jacob Richmond and Brooke Maxwell
Nov. 21-24

Mousetrap
by Agatha Christie
Feb. 20-23

Emerge
New Student Dance Works
March 28-29

The Most Happy Fella
by Frank Loesser
April 25-27

For event information go to
memphis.edu/theatre



Memphis' Finest Estate Sales

Todd Stricklin
TODD & CO.
Estate Sales
901.238.6806

temperature, inc.

congratulates

THEATRE MEMPHIS

on 103 years of entertaining the community!

Proudly Serving the Mid-South since 1969!

A/C and Heating Installation & Service
Computer Room A/C Installation & Service
Controls
Energy Management
Building Management
Utility Savings
Building Access Systems
Rental Chillers and Cooling Units
Chiller Conversions

Chiller Replacements
Hepa and Pleated Filters
Refrigeration
Piping and Process Piping
Gas Piping
Used Equipment
Facilities Management
Ventilation
HVAC Maintenance Contracts

7500 Appling Center Drive
Memphis, TN 38133
Office 901.388.4706
Fax 901.388.9797

Next at Theatre Memphis

In the Next Stage:

A Midsummer Night's Dream

Written by William Shakespeare

Directed by John Maness

September 13 – 29, 2024

Magical and Captivating. One of the Bard's most popular comedies. The marriage of Theseus and Hippolyta is complicated by the conflict among four lovers and whom they love. A group of amateur actors rehearsing a play for the wedding is added to the mix as both groups wind up outside of Athens in a forest full of fairies who manipulate the humans and have their own domestic intrigue. What absurdly comes to be as the plots progress ends with all being well and the suggestion that it all may have been nothing but a dream.

Adult: \$25

Member/Senior/Military: \$20

*Student: \$15

In the Lohrey Theatre:

The Mousetrap

Written by Agatha Christie

Directed by Bruce Huffman

October 11 – 27, 2024

Mysterious and Clever. In this all-time favorite mystery, guests and staff are stranded at Monkswell Manor during a snowstorm when a local woman is murdered. It soon becomes clear that the murderer is amongst them. A police inspector interrogates them as they grow increasingly suspicious; and when a second murder takes place, tension and fear escalate. Seven strangers turn on one another as an unsuspecting twist reveals who-done-it.

Single tickets for *The Mousetrap* go on sale and members may reserve seats as of September 10, 2024.

Adult: \$25

Member/Senior/Military: \$20

*Student: \$15

*Student tickets are available to those 18 and under as well as college students with a valid ID.

**Call the Box Office at 901.682.8323 for reservations
or order tickets online at www.theatrememphis.org.**

From the Executive Producer...



I am so excited to say it again, what an AMAZING record breaking 2023-24 season! And, thank you for returning to enjoy our outstanding productions. Once again you helped us break all attendance records in our 103 year history. We are so grateful to you for your amazing support and vote of confidence as we present our shows and programs for YOU and by YOU, our treasured audience and community.

Theatre Memphis is humbled and grateful to have received 79 Memphis Ostrander theatre nominations for outstanding productions as well as incredible TM staff designs, direction, choreography, music direction and performances during this past record-breaking attendance season. These nominations include Best Musical nods for **BEAUTIFUL: THE CAROLE KING MUSICAL**

and Rodgers and Hammerstein's **CINDERELLA**. **THE CRUCIBLE**, **SILENT SKY** and **MASTER CLASS** received nominations for Best Play. We are most appreciative of this recognition.

This summer we had over 80 young people involved with our summer workshop production of Disney's **DESCENDANTS**. It was an outstanding and meaningful success on all levels. Our Memphis and Mid-South youth not only performed on stage, but they also ran the sound, lighting, served as crew members changing scenery as well as called the show as stage managers. There is an incredibly bright future for our next generation of theatre artists on stage and behind the scenes!

If you have purchased an adult single ticket to **GREASE**, you can redeem the face value of that single ticket and subtract from our already low price of \$140 for a season membership and receive six (6) additional tickets that can be used on any show excluding **A CHRISTMAS CAROL**. **This offer is good through September 8, 2024**. Our offerings after **GREASE** include Shakespeare's **A MIDSUMMER NIGHT'S DREAM**, Agatha Christie's **THE MOUSETRAP**, **PARALLEL LIVES**, **INHERIT THE WIND**, Disney's **BEAUTY AND THE BEAST**, **SILENT SKY**, Neil Simon's **RUMORS** and Fats Waller's **AIN'T MISBEHAVIN**. I want to extend a heartfelt thank you to all of you who have already purchased a season ticket to another wonderful season we have planned for you.

You have noticed that we have added a new parking strip with additional lighting on our north side that runs parallel to Southern. We have been able to increase the number of parking places to 29 spaces to accommodate our amazing audiences with safety and convenience as the priority for this exciting expansion.

Once again, I want to extend a very special thank you to the Tennessee Arts Commission for the outstanding opportunity to apply and receive a grant from the TN Nonprofit Arts & Culture Recovery Fund. Several of our projects have been supported, in whole or in part, by federal award number SLFRP5534 awarded to the State of Tennessee by the U.S. Department of the Treasury. We are grateful for this important grant to help support the important and exciting work of Theatre Memphis.

I will always continue to use two vitally important and heartfelt words often and those words are **THANK YOU – THANK YOU** to our Memphis and Mid-South community for your continued vote of confidence in our work and mission. As I always say, **YOU** are the reason we work tirelessly toward our continued goals of consistent artistic excellence in our productions and outreach and education endeavors. We are so fortunate and blessed to have your friendship and support. **WE APPRECIATE YOU** more than words can express!!

Debbie

THEATRE MEMPHIS

Presents

GREASE

Book, Music , and Lyrics by **Jim Jacobs and Warren Casey**

With additional Movie Music and Lyrics by **John Farrar, Louis St. Louis, Scott Simon and Barry Gibb**

Directed and Choreographed by **Whitney Branan***

Music Direction by **Jeffery Brewer**

Lighting Design

Nicole Northington

Costume Design

Amie Eoff

Scenic & Properties Design

Jack Netzel-Yates

Sound Design

Jason Eschhofen

Wig, Hair & Make Up Design

Rence Phillips & Ellen Ring

Stage Manager

Melissa Andrews

Assistant Director/Associate Choreographer

Lexie Lang

Production Manager/Technical Director

Michael Compton

Season Presenting Sponsor: **First Horizon Foundation/ArtsFirst**

Show Sponsor: **Edward Sharp**

Additional Support: **Jim and Linda Brigance** and **John and Anne Robilio**

Media Sponsors: **WKNO 91.1 FM** and **Memphis Flyer**

GREASE is presented by special arrangement with Samuel French, Inc., a Concord Theatricals company. www.concordtheatricals.com

The taking of photographs and videotaping or any other video/audio recording of this production is strictly prohibited. Your cooperation is appreciated.

Wheelchair accessible restrooms are located off the north and south lobbies.

Hearing reinforced headsets are available at the Box Office.

Please ask the House Manager or an Usher for assistance.

Please be advised that this production contains fog, haze, and flashing light effects.

*Whitney Branan is a Member of the Stage Directors and Choreographers Society, a national theatrical labor union.



The Director and Choreographer are Members of the **STAGE DIRECTORS AND CHOREOGRAPHERS SOCIETY**, a national theatrical labor union.

Cast of Characters

<i>Danny Zuko</i>	Cristian S. Nieves
<i>Sandy Dumbrowski</i>	Rachel Brannen
<i>Betty Rizzo</i>	Arielle Mitchell
<i>Frenchy</i>	Mac White
<i>Marty</i>	Courtney Church Tucker
<i>Jan</i>	Caroline Pillow
<i>Doody</i>	Mara Rus
<i>Kenickie</i>	Justin Raynard Hicks
<i>Sonny Lattierri</i>	Caleb Medlin
<i>Roger</i>	Cody Wayne Morris
<i>Vince Fontaine / Teen Angel</i>	Nathan McHenry
<i>Cha-Cha Digregorio</i>	Lexie Lang
<i>Eugene Florczyk</i>	Cade Forbes
<i>Johnny Casino</i>	Kylan Owens
<i>Miss Lynch</i>	Emily F. Chateau
<i>Patty Simcox</i>	Fifi Younker

Ensemble

Josie Chavers, Kage Cliburn, Daniel Davis, Jacob Hesselbein, Parker Bradley Hood,
Jeremiah McDonald, Naiya Nolan-Dillard, Chandler Osella, Kylan Owens,
Briana Patton, Joshua Waits, Rebecca Winchester

Understudies

Josie Chavers (*Frenchy*), Kage Cliburn (*Doody*), Parker Bradley Hood (*Roger*),
Lexie Lang (*Betty Rizzo*), Jeremiah McDonald (*Johnny Casino / Sonny Lattierri*),
Nathan McHenry (*Danny Zuko*), Cody Wayne Morris (*Teen Angel*), Naiya Nolan-Dillard
(*Cha-Cha Digregorio*), Chandler Osella (*Patty Simcox*), Kylan Owens (*Kenickie*),
Briana Patton (*Jan*), Joshua Waits (*Eugene Florczyk*),
Rebecca Winchester (*Marty / Miss Lynch*), Fifi Younker (*Sandy Dumbrowski*)

Swings

Morgan Hipp, Noah Mahintorabi

Orchestra

Renée Kemper Murray, *Keyboard*
John Lux, *Saxophone*
Chelsea Negray, *Saxophone*
Corbin Miles, *Guitar*
Ed Richter, *Guitar*
Pete Vescovo, *Bass*
Ed Murray, *Percussion*
Jeffery Brewer, *Music Director / Conductor*



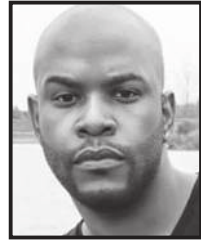
Rachel Brannen



Emily F. Chateau



Cade Forbes



Justin Raynard Hicks



Lexie Lang



Nathan McHenry



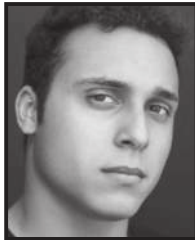
Caleb Medlin



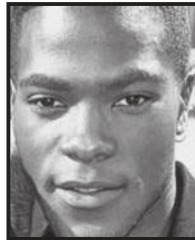
Arielle Mitchell



Cody Wayne Morris



Cristian S. Nieves



Kyran Owens



Caroline Pillow



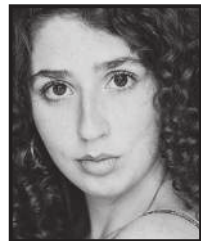
Mara Rus



Courtney Church Tucker



Mac White



Fifi Younker



Whitney Branan
Director/
Choreographer



Jeffery Brewer
Music Director/
Conductor

Musical Numbers

Act I

Scene 1: First Day of School

Grease Vince Fontaine, Rydell Students

Scene 2: Lunch

Summer Nights Sandy and Danny, Pink Ladies,
Burger Palace Boys, Rydell Students

Scene 3: Football Changing Room

Those Magic Changes Doody, Burger Palace Boys, Rydell Students

Scene 4: Pajama Party

Freddy My Love Marty, Pink Ladies, Teen Dream Ensemble

Scene 5: Street Corner

Greased Lightnin' Kenickie, Burger Palace Boys, Greaser Ensemble

Scene 6: Schoolyard

Rydell Fight Song Sandy, Patty, Rydell Cheerleaders

Scene 7: Park

Mooning Roger, Jan

Look at Me, I'm Sandra Dee Rizzo

We Go Together Pink Ladies, Burger Palace Boys, Rydell Students

There will be one 15-minute Intermission

“GREASE”

Words and Music by Barry Gibb

© Songs Of Universal, Inc. on behalf of Crompton Songs Not for broadcast transmission.

All rights reserved. DO NOT DUPLICATE.

“GREASE” by arrangement with Robert Stigwood.

THE VIDEOTAPING OR MAKING OF ELECTRONIC OR OTHER AUDIO AND/OR VISUAL RECORDINGS OF THIS PRODUCTION AND DISTRIBUTING RECORDINGS OR STREAMS IN ANY MEDIUM, INCLUDING THE INTERNET, IS STRICTLY PROHIBITED, A VIOLATION OF THE AUTHOR(S)'S RIGHTS AND ACTIONABLE UNDER UNITED STATES COPYRIGHT LAW. FOR MORE INFORMATION, PLEASE VISIT: <https://concordtheatricals.com/resources/protecting-artists>.

Musical Numbers

Act II

Scene 1: Dance/Gymnasium

<i>Shakin' at the High School Hop</i>	Johnny Casino, Rydell Students
<i>It's Raining on Prom Night</i>	Frenchy, Sandy
<i>Born to Hand Jive</i>	Johnny Casino, Rydell Students
<i>Hopelessly Devoted to You</i>	Sandy

Scene 2: Front of Burger Palace

<i>Beauty School Dropout</i>	Teen Angel, Frenchy, Choir
------------------------------------	----------------------------

Scene 3: Drive-In Movie

<i>Sandy</i>	Danny
--------------------	-------

Scene 4: Jan's Basement

<i>Rock 'N' Roll Party Queen</i>	Doody, Roger
<i>That New One</i>	Doody, Roger
<i>There Are Worse Things I Could Do</i>	Rizzo
<i>Look at Me, I'm Sandra Dee Reprise</i>	Sandy

Scene 5: Graduation Carnival

<i>You're the One That I Want</i>	Sandy, Danny, Rydell Students
<i>We Go Together Reprise</i>	Company

“HOPELESSLY DEVOTED TO YOU”

By John Farrar

Ensign Music Corporation (BMI), Unichappell Music Inc. (BMI) and John Farrar Music (BMI) All rights administered by Unichappell Music Inc.

“HOPELESSLY DEVOTED TO YOU” by arrangement with Robert Stigwood.

“SANDY”

By Louis St. Louis and Scott Simon

Ensign Music Corporation (BMI)

All rights administered by Unichappell Music Inc.

“SANDY” by arrangement with Robert Stigwood.

“YOU'RE THE ONE THAT I WANT”

By John Farrar

Ensign Music Corporation (BMI), Unichappell Music Inc. (BMI) and John Farrar Music (BMI)

All rights administered by Unichappell Music Inc.

“YOU'RE THE ONE THAT I WANT” by arrangement with Robert Stigwood.

Who's Who

Melissa Andrews (Stage Manager) (she/her) is thrilled to be back at Theatre Memphis where she last stage managed A CHRISTMAS CAROL in 2021. Melissa is a freelance lighting designer and stage manager and the Coordinator of the McCoy Theatre at Rhodes College. She is forever grateful to her Theatre Memphis family, Jeff, Whitney, Lexie, and Judith, and still “hopelessly devoted” to her husband of ten years.

Whitney Branan (Director / Choreographer) Born in Memphis, Whitney lived in New York for thirteen years where she was the resident tap-coach for the Broadway show BILLY ELLIOT and two of its national tours. After graduating from Wagner College in NYC, she was the personal/executive assistant to Charles Strouse (composer of ANNIE, BYE BYE BIRDIE, and APPLAUSE!). Whitney has worked across the country (Bally’s Casino in Las Vegas) and across the ocean (three “Pick of the Fringe” Award-winning trips to the International Fringe Festival in Edinburgh, Scotland). Whitney was the world-premiere choreographer of CHANGING MINDS for Theatrical Rights Worldwide in NYC. She choreographed THE IRISH AND HOW THEY GOT THAT WAY at New York City’s Snug Harbor Theatre and Off-Off Broadway at Queens Theatre in the Park, and directed/choreographed the live concert Steve Kinworthy’s LOVIN’ EVERY MINUTE, filmed in Branson, MO. A favorite director/choreographer credit is crafting four musical productions aboard the American Queen, the largest luxury paddle boat in the world. She directed/choreographed four music videos for songwriter Amy Barkley. She is the founder/owner of Dramatic Movement and a faculty member at Rhodes College where she teaches dance. Whitney has worked extensively with the Texas Shakespeare Festival, choreographing THE TEMPEST, NELL GWYNN, PRIDE AND PREJUDICE, COMEDY OF ERRORS, MUCH ADO ABOUT NOTHING, and PETER AND THE STARCATCHER as well as directing/choreographing THE MUSIC MAN, SOMETHING ROTTEN!, and SWEENEY TODD with all three breaking records for the top-grossing musical in TSF history. In 2022, she was awarded the Otis Smith Legacy Dance Award. Whitney has received multiple Ostrander, Allie, BroadwayWorld, and NY Innovative Theatre awards and nominations for her work. Memphis/Mississippi director and/or choreographer credits include: (Playhouse on the Square): SOMETHING ROTTEN!; THE WIZARD OF OZ; HEAD OVER HEELS; THE TAMING; MADAGASCAR: A MUSICAL ADVENTURE; JUNIE B JONES: THE MUSICAL; SCHOOLHOUSE ROCK LIVE!. (Theatre Memphis): SONDHEIM TRIBUTE REVUE, MAMMA MIA!; LA CAGE AUX FOLLES; NEWSIES [associate]. (New Moon Theatre): SHOCKHEADED PETER; EVIL DEAD THE MUSICAL; A MONSTER CALLS. (DeSoto Family Theatre): CAMELOT; OKLAHOMA!; BYE BYE BIRDIE; JUNIE B JONES JR: THE MUSICAL; NEWSIES; BEAUTY AND THE BEAST JR; ALADDIN JR; THE LION KING JR. Proud Member of SAG-AFTRA, AEA, and SDC unions. whitneybranan.com insta: whitneybranan

Rachel Brannen (Sandy Dumbrowski) is thrilled to be returning to the Theatre Memphis stage in this iconic show! Some previous favorite credits include LITTLE WOMEN (Amy), OKLAHOMA! (Ado Annie), and FOOTLOOSE (Ariel). A huge thank you to Whitney and Jeff for this incredible opportunity, and to her friends and family for their constant love and support. “To God be all the glory.”

Jeffery Brewer (Music Director / Conductor) is thrilled to be a part of this high-octane production of GREASE! “This cast has been ‘on fire’ since the first day of rehearsals, caring and focused and so talented. I want to give a huge and heartfelt thank you to our swings

Who's Who

and understudies! They all have worked extremely hard and have made rehearsals so much better. They are any production's unsung heroes. Whitney Branan, our director and choreographer, has inspired this cast every day with her organization, her personal caring and her off-the-charts energy. She has been a wonderful collaborator." Jeff is a retired choral music educator, having taught 35 years at the middle, high school, and collegiate levels. He received both his bachelor's and master's degrees in Music Education from Wichita State University and his DMA (Doctorate in Music) in Choral Conducting and Choral Literature from the University of Missouri at Kansas City. Dr. Brewer is the Choir Director at Kingsway Christian Church in Germantown. He would like to thank Debbie Litch and her supremely gifted design staff for making every production at TM so amazing and so rewarding to be a part of!

Judith Cardoso (Assistant Stage Manager) was invited to join GREASE as Assistant Stage Manager, thanks to the production team. She usually has the pleasure to perform spotlight duties for Theatre Memphis' spectacular musicals, but this role has offered her the chance to see the effort and artistry that go into putting together a season opener. Judith is in awe, ladies and gentlemen, and she would not have missed it for the world. "Hats off and thumbs up."

Warren Casey (Author / Composer / Lyricist) was born in Yonkers, New York, and attended Syracuse University. During the late '50s, he learned all about "greasers" while working as an art teacher in upstate New York. He moved to Chicago in 1962, where he hoped to pursue an acting career. He appeared in dozens of productions, including creating the role of Bernie Litko in David Mamet's SEXUAL PERVERSITY IN CHICAGO. He supported himself with jobs in retail, including working as an assistant manager of a chain of apparel stores, and as a record salesman. In the meantime, he taught himself how to play the guitar and began writing songs. Mr. Casey acted with the Chicago Stage Guild (where he met Jim Jacobs), the Old Town Players, and the Kingston Mines Theatre. The latter company staged the original production of GREASE which he wrote with Jim Jacobs. After the incredible success of both the musical and the movie, the two collaborated on ISLAND OF LOST COEDS, a musical satire of the B-movies of the 1950s. Mr. Casey died in 1988.

Olivia "Via" Caspersen (Assistant Stage Manager) was born backstage wearing black and sporting a headset. Previously, Via has been a Stage Manager for ELF THE MUSICAL; Assistant Stage Manager for JESUS CHRIST SUPERSTAR, GUYS AND DOLLS, A CHRISTMAS CAROL 2022, and A RAISIN IN THE SUN; Assistant Lighting Designer for THE ADDAMS FAMILY, TITANIC THE MUSICAL, and 9 TO 5 THE MUSICAL; Spotlight Operator for MAMMA MIA!, MATILDA THE MUSICAL, RAGTIME, and MARY POPPINS; and Running Crew for SHERLOCK'S LAST CASE and BEAUTIFUL: THE CAROLE KING MUSICAL. "I love theatre and I am excited to be working with Theatre Memphis and all the lovely people in this show."

Emily F. Chateau (Miss Lynch) moved to Memphis from Detroit, Michigan several years ago and has made TM her second home. Some of her favorite productions have been MAMMA MIA!, THE ADDAMS FAMILY, FALSETTOS, THE MUSIC MAN, THE SOUND OF MUSIC, and OUR TOWN.

Who's Who

Josie Chavers (Ensemble / u/s Frenchy) is beyond excited to be making her Theatre Memphis debut! She has been wanting to do a show here for so long, and feels so grateful to be a part of this show. They would like to thank Whitney Branan for giving her such an amazing opportunity to dance her heart out!

Kage Cliburn (Ensemble / u/s Doody) is ecstatic to be a part of this show. Select credits include: THE LITTLE MERMAID at The Muny, THE PROM (u/s Nick), CHARLIE AND THE CHOCOLATE FACTORY (u/s Mike), THE SPONGEBOB SQUAREPANTS MUSICAL (SpongeBob), and GREASE (Danny Zuko). Recently, Kage played Frank Abagnale, Jr. in CATCH ME IF YOU CAN. Many thanks to Whitney and everyone who helped make this production possible. @kagewesleycliburn

Daniel Davis (Ensemble) is always excited to be back on stage. He has performed in many musicals and is thrilled to see what the upcoming years has in store for him. Favorite on stage credits include: Hernando Theatre's THE LITTLE MERMAID (Sebastian); Panola Playhouse's FOOTLOOSE (Jeter / Featured Dancer); DeSoto Family Theatre's LEGALLY BLONDE THE MUSICAL (Grandmaster Chad); Panola Playhouse's DRIVING MISS DAISY (Hoke Colburn) and WHITE CHRISTMAS (Dance Captain / Tap / Featured Dancer); and Kudzu Playhouse's MADAGASCAR (Alex). Daniel made his debut as a choreographer this year with Panola Playhouse's SHREK THE MUSICAL JR. and NWCC's Broadway Musical Revue TOO DARN HOT from KISS ME KATE. He is incredibly thankful for all of his opportunities and wants to thank his entire cast and crew and amazing production team for all of their immense hard work. "Greatness from small beginnings." @danieldavis_

Cade Forbes (Eugene Florczyk) is excited to return to the Theatre Memphis stage after most recently being seen as the Raccoon in last season's CINDERELLA. Some of his favorite past credits include PETER PAN (Peter Pan), LITTLE SHOP OF HORRORS (Seymour), CATS (Pouncival), ELF THE MUSICAL (Buddy), and HAIRSPRAY (Corny Collins). Offstage, he is a proud alumni of The University of Memphis and has started his professional career there as the Coordinator of Parent and Family Services. Cade would like to thank his family and friends for their constant support, and he hopes that you all will enjoy the show!

Jacob Hesselbein (Ensemble) is elated to be back on the Theatre Memphis stage! He is a graduate from The University of Memphis with a BFA in Theatre with a concentration in Musical Theatre. Previous credits include: YOU'RE A GOOD MAN, CHARLIE BROWN (Ensemble / Principal Swing); MURDER BALLAD (Michael); MARY POPPINS (Ensemble); THE ROCKY HORROR SHOW (Phantom / Dance Captain); PIPPIN (Theo / Player); and HELLO, DOLLY! (Ensemble). "Huge thanks to Whitney, Jeff, and Lexie! Enjoy the show!" @jakexhess

Justin Raynard Hicks (Kenickie) was born on January 2nd, 1995 in Dallas, TX. After moving to Memphis, TN at the age of 7, Justin began studying singing, acting, and dance. At the age of 15, Justin performed Isaac Hayes' Oscar award winning hit "Theme from Shaft" at the 2011 TvOne Trumpet Awards in Atlanta, GA in honor of Richard Roundtree for his role in the 1971 film. Since then, the Stax Music Academy alum has performed both nationally and internationally at venues such as the Apollo Theater, Lincoln Center, Smithsonian Folklife Festival, The Kennedy Center, and The Gibson Showcase Museum

Who's Who

in Berlin, Germany. Since 2012, Justin has starred in over 30 regional/community theatre productions including 10 productions at Hattiloo Theatre, *THE SCOTTSBORO BOYS* (Haywood Patterson) at Playhouse on the Square, and *FENCES* (Ostrander Award nomination) at Theatre Memphis. Currently, Justin is working on his second independent album (previous releases are available on all streaming platforms as JUSTINRAYNARD.) as well as continuing his career as a multidisciplinary artist. With consistency and hard work, Justin hopes to prove to the world that he is a true triple threat entertainer.

Morgan Hipp (Swing) is excited to be working with Theatre Memphis and to swing for the first time! She is a double major in Musical Theatre and Dance at SEMO. She would like to thank her family for all their support and the team at Theatre Memphis for such an amazing opportunity!

Parker Bradley Hood (Ensemble / u/s Roger) is thankful to be returning to the Lohrey Stage. Trained at the former University of the Arts in Center City Philadelphia. Credits include: *PIPPIN* (Ensemble); *NEWSIES* (Davey); *CATCH ME IF YOU CAN* (Frank Abagnale, Jr.); and *METAMORPHOSIS*. Parker would like to thank Whitney Branan and the talented cast of *GREASE*!

Jim Jacobs (Book / Music / Lyrics), who created *GREASE* (in 1970) with Warren Casey, was born and raised on the mean streets of Chicago's far northwest side. During the golden era of rock 'n' roll (1956-1960) he was a guitar-playing "greaser" student at Taft High School. In 1963, Jacobs met Warren Casey when they were both cast in a local theatre production of *A SHOT IN THE DARK*. Seven years later they wrote what was to become one of the greatest musicals of all time. *GREASE* opened in 1971 in a former trolley barn called the Kingston Mines Theatre in Chicago. A year later, *GREASE* made it to Broadway and "Greasmania" took off, resulting in one of the longest running shows in Broadway history. The 1978 movie became and remains the highest grossing movie musical of all time. Originally an actor, Jacobs has been seen on television, in motion pictures, regional theatre, national tours, and on Broadway. He is the co-author of several other plays and musicals including *ISLAND OF LOST COEDS*, a musical spoof of the low budget sci-fi/horror/jungle movies of the 1950s, which he wrote with Warren Casey. In May 2014, Mr. Jacobs was presented with an honorary doctorate degree from Columbia College in Chicago. He currently resides in Southern California and remains active in the theatre, especially with the American Theatre Company of Chicago.

Sherronda Whitmore Johnson (Intimacy Choreographer) is dedicated to ensuring the physical and emotional safety of actors as they perform scenes involving personal or challenging emotions. Her expertise covers moments of vulnerability, trauma, intimacy, and simulated sexual acts, such as kissing and embracing. Sherronda's recent projects include *CINDERELLA*, *BEAUTIFUL: THE CAROLE KING MUSICAL*, *THE GLASS MENAGERIE*, and *A RAISIN IN THE SUN* at Theatre Memphis; *SUCCESSION*, *FATHER COMES HOME FROM THE WARS*, *THE COLOR PURPLE*, and *PORGY AND BESS* at Hattiloo Theatre; and *MISSISSIPPI GODDAMN* at Circuit Playhouse. She is grateful to Theatre Memphis and the cast for their trust as they navigate teenage romantic ideals and their complexities.

Who's Who

Lexie Lang (Assistant Director / Associate Choreographer / Dance Captain / Cha-Cha Digregorio / u/s Betty Rizzo) From Europe to Japan to America, Lexie has gone far and wide to pursue her career in the arts. She has performed, taught, and traveled in a total of 15 countries and does not plan on stopping anytime soon. Recent favorite credits include YOUR ARMS TOO SHORT TO BOX WITH GOD (Ensemble), CHARLIE AND THE CHOCOLATE FACTORY (Choreographer / Ensemble), NATASHA PIERRE AND THE GREAT COMET OF 1812 (Ensemble / Swing). @lexielangg

Noah Mahintorabi (Swing) is a sophomore at Houston High School. He recently appeared onstage at Theatre Memphis as Jay in DESCENDANTS and has participated in the Tennessee All-State Orchestra Program. He would like to thank his family, the director, cast, crew, and entire production team for this opportunity.

Jeremiah McDonald (Ensemble / u/s Johnny Casino / u/s Sonny Latierra) is so excited to be a part of this beautiful production of GREASE! He is currently a junior at The University of Memphis pursuing a BFA in Musical Theatre. His most recent theatre credits include CINDERELLA (Ensemble) at Theatre Memphis, CHARLIE AND THE CHOCOLATE FACTORY (Ensemble) at Playhouse on the Square, and ELECTRA (Orestes) at The University of Memphis. He wants to thank his family and friends for their endless support. "Hope you enjoy the show!"

Nathan McHenry (Vince Fontaine / Teen Angel / u/s Danny Zuko) moved to Memphis in 2015 to work at Playhouse on the Square. Recent performances include CONSTELLATIONS at Quark Theatre, BEAUTIFUL: THE CAROLE KING MUSICAL (Gerry Goffin) at TM, and NATASHA PIERRE AND THE GREAT COMET OF 1812 (Anatole) at POTS. Other performances include MEMPHIS (Huey Calhoun) and MILLION DOLLAR QUARTET (Jerry Lee Lewis), both of which won Ostrander Awards. www.nathanmchenry.com

Caleb Medlin (Sonny Latierra) fell in love with musical theatre when he was 12 years old at Appling Middle School and has furthered his theatre education at Bartlett High School by playing the title roles in TARZAN and PIPPIN! He would like to thank Robb Zelonky, his mother, and his beautiful girlfriend, Julietta, for their overwhelming support on and off the stage.

Arielle Mitchell (Betty Rizzo) is a senior BFA Musical Theatre Major at The University of Memphis. They were most recently seen in CINDERELLA (Charlotte) at Theatre Memphis, and THE PROM (Alyssa Greene) and CHARLIE AND THE CHOCOLATE FACTORY at Playhouse on the Square. She is absolutely thrilled to be in her second production at Theatre Memphis and is honored to be playing such an iconic role with an amazing cast, crew, and director! "Enjoy the show!"

Cody Wayne Morris (Roger / u/s Teen Angel) is thrilled to be back on the Theatre Memphis stage! Some of his most recent roles include Joey in SISTER ACT (TM), Ralph in REEFER MADNESS (New Moon), and Jake in EVIL DEAD: THE MUSICAL (TheatreWorks)! Cody wants to send love to his partner, Clark, and his parents for their undying support in his pursuit of this art form. "Break legs everyone! GREASE is the word!"

Who's Who

Cristian S. Nieves (Danny Zuko) received his BFA in Musical Theatre from Viterbo University in La Crosse, Wisconsin. His favorite credits include *CLYDE'S* (Rafael); *THE WIZARD OF OZ* (Tin Man); *SOMETHING ROTTEN!* (Nigel Bottom); *URINETOWN* (Bobby Strong); and *CATS* (Macavity). Cristian recently finished a contract onboard the Oceania Sirena as a vocalist, traveling through the Mediterranean and Caribbean. Cristian is originally from Orlando, Florida and is bilingual in English and Spanish. Cristian would also like to thank his fiancée, Lexie Lang, for her unwavering love and support.

Naiya Nolan-Dillard (Ensemble / u/s Cha-Cha Digregorio) is passionate about the arts and is extremely proud to join this cast! Her recent credits include *THE CURIOUS INCIDENT OF THE DOG IN THE NIGHT-TIME* (Judy) at Germantown Community Theatre and *A CHRISTMAS CAROL* (First Charity Collector / Ensemble / Fezziwig Dancer) at Theatre Memphis.

Chandler Osella (Ensemble / u/s Patty Simcox) is excited to be in her first Lohrey Theatre show at Theatre Memphis. Recent credits include *LEGALLY BLONDE THE MUSICAL* (Ensemble) at Germantown Community Theatre; and *GREASE* (Jan) and *HAIRSPRAY* (Tracy Turnblad) at Wonder Theatre in San Antonio, TX. Chandler thanks her husband for his constant love and support.

Kylan Owens (Johnny Casino / Ensemble / u/s Kenickie) is pumped to be returning to Theatre Memphis where he performed in *HAIRSPRAY* in 2019 and played Pepper in *MAMMA MIA!* Being away from theatre for 2 years, he is excited to be back in the space that showed him who he was! He wants to thank Whitney Branan and her team for trusting him with this role. "Let's have a rocking good time!"

Briana Patton (Ensemble / u/s Jan / Intimacy Captain) is honored to return to the Theatre Memphis stage. She is no stranger to this community, having last been seen in *MARY POPPINS* as an ensemble member and swing. Bri hopes you enjoy grooving with us and the production, and she appreciates everyone for allowing her to follow her dreams! "Keep shaking!" @epitomeofbri

Caroline Pillow (Jan) (she/her) is a recent graduate from Oklahoma City University where she received her Bachelors of Music for Musical Theatre and minor in Theatrical Directing. Recent credits include Margaret (*THE LIGHT IN THE PIAZZA*), Madeleine Astor / Kate Mullins (*TITANIC*), and Olive Ostrovsky (*THE 25TH ANNUAL PUTNAM COUNTY SPELLING BEE*). "Huge thank you to Whitney, Jeff, Melissa, and everyone involved in this show!" Special thanks to her family, friends, and cat, Lion, for their love and support! @carolinepillow carolinepillow.com

Mara Rus (Doody) is a junior at The University of Memphis pursuing a BBA in Business and minor in Theatre. They would like to thank the wonderful cast and crew for making this show so refreshing, and specifically, Whitney and Jeff, for this incredible opportunity! Special thanks to their partner, KT.

Courtney Church Tucker (Marty) is thrilled to return to the stage in this fantastic production! At Theatre Memphis, she has performed in *BEAUTY AND THE BEAST* (Silly Girl), *TINTYPES* (Anna Held), and others. Roles elsewhere include *YOU'RE A GOOD*

Who's Who

MAN, CHARLIE BROWN (Lucy); NUNSENSE (Sister Mary Amnesia); HONKY TONK ANGELS (Darlene); and more. Courtney teaches Music at Bodine School. All her love to Ben and Ceilidh!

Joshua Waits (Ensemble / u/s Eugene Florczyk) has been summer lovin' this exciting time spent with his amazingly talented friends. Credits at TM: HELLO, DOLLY!; MAMMA MIA!; HAIRSPRAY; Disney's NEWSIES. Credits at POTS: THE WIZARD OF OZ; CHARLIE AND THE CHOCOLATE FACTORY; YOU'RE A GOOD MAN, CHARLIE BROWN; CATCH ME IF YOU CAN. Joshua traveled to Amarillo, TX and joined the TEXAS Outdoor Musical family. He thanks Whitney, Jeff, Lexie and his parents. "Be Happy, Be Humble, Be Hopeful". @joshualwaits

Mac White (Frenchy) is so excited to be in this production! She was recently seen in THE CRUCIBLE and BEAUTIFUL: THE CAROLE KING MUSICAL (Theatre Memphis) and ARMS TOO SHORT TO BOX WITH GOD and CATCH ME IF YOU CAN (Playhouse on the Square). She would like to thank the cast and crew! She hopes you dig this show! @macw_

Rebecca Winchester (Ensemble / u/s Marty / u/s Miss Lynch) is thrilled to return to the Theatre Memphis stage this summer! She recently returned to theatre after a 6 year hiatus last year as Sister Mary Lazarus in Theatre Memphis' SISTER ACT and was just Vivienne Kensington in GCT's LEGALLY BLONDE THE MUSICAL. Rebecca graduated from Rhodes College in 2022 and is now the PR Specialist at Memphis Zoo. She is so blessed to be part of this amazing cast! She would like to thank her parents, family, friends, boyfriend, and fellow castmates for all of their support. "Grease is the WORD!"

Fifi Younker (Patty Simcox / u/s Sandy Dumbrowski) is a sophomore dance major at Marymount Manhattan College. Recent productions include CINDERELLA; MARY POPPINS; GUYS AND DOLLS; and Ermengarde in HELLO, DOLLY! at Theatre Memphis; Gretchen Wieners in MEAN GIRLS at New Day Children's Theatre; Leisel in THE SOUND OF MUSIC and Miss Andrew in MARY POPPINS at St. Mary's Episcopal School. She is also the recipient of the 2022 Outstanding Featured Dancer in a Musical at the High School Musical Theatre Awards. @fifiyounker

A very special thank you to Debbie Branan, Carl Caspersen, Cameron Crawford, Danny Crowe, Jason Eschhofen, Suzanne Jackson, Sherronda Whitmore Johnson, Ron Kwoka, Louise Levin, Renée Kemper Murray, Kate Peckham, Mac Reece, Ed Richter, Gabriella Scarpace, Kirie Walz, and our incredible Swings: Noah Mahintorabi and Morgan Hipp.

Theatre Memphis has received special funding from the TN Nonprofit Arts & Culture Recovery Fund. Several of our projects are being supported, in whole or in part, by federal award number SLFRP5534 awarded to the State of Tennessee by the U.S. Department of the Treasury.

Theatre Memphis is grateful for this outstanding aforementioned grant administered by the Tennessee Arts Commission.

ACKNOWLEDGMENTS

HONORARIUMS

Jim and Linda Brigance *from Mr. John C. Jerit*
Circle Arts *from Anita Old*
Allison Clark *from Gay Daughdrill Boyd*
Janice Hall *from Debbie Litch*
Janice Hall's Birthday *from Margaret Eldridge*
Debbie Litch *from John and Anne Robilio*
Debbie Litch's Birthday *from Wendy Carpenter*
Dr. Mel and Debbie Litch *from Deborah Sharp*
Bill Short *from William Short*
Theatre Memphis *from First Horizon*
Julia Truelove *from her very proud Aunts and Uncles*

MEMORIALS

Lamar Hartzog *from Rebecca Adams, Wendy Carpenter,
Mark J. Chambers, Anne Conrad, Jill Fazakerly, Mary Evelyn Feazel,
Pat and Jay Ferguson, Janice and John Hall, Sherie Hambidge,
Randall Hartzog, Louise Levin, Amy and Henry Lindeman,
Dr. Mel and Debbie Litch, Susan Mackenzie and Virginia Stallworth,
Amy MacNeill, Brad and Dina Martin, Amy McSpadden, Gayle Moore,
David Richardson, Edwin Richardson, Deborah Sharp, Edward Sharp,
Todd Stricklin, Neil Stringer, Debby Tuttle, Beth Whitehead,
Deborah Agner Widdows, Cecelia Wingate*
Lee McWaters *from Edward Sharp*
Claire Thompson *from Walter M. Thompson II*
Eric Thompson *from Walter M. Thompson II*
Jim Waller *from Luther and Dot Gause, Ted and Joyce Johnson,
Dr. Mel and Debbie Litch*
Rose Wilson *from Lisa Hall-Hayes*
Bennett Wood *from Laura Helms, Linda Wood Kleinworth*

GREASE CREW

Stage Manager
Melissa Andrews

Assistant Stage Managers
Judith Cardoso,
Olivia "Via" Caspersen

Deck Manager
Julia Truelove

Production Assistant
Paige Jerit

Intimacy Choreographer
Sherronda Whitmore Johnson

Intimacy Captain
Briana Patton

Dance Captain
Lexie Lang

**Assistant to the
Lighting Designer**
John Hudson

Stage Crew
Ben Marshall

Props Runner
Jabria Chanel

Pin Rail
William DeCotten, Nate Harms

Wig and Makeup Assistants
Ruby Austin, Josalyn Hoyle

Dressers
Amanda Brewer, Julia Gephart,
Aja Jefferson,
Mary Grace Renfro

Spot Light Operators
Jess Fuller, Mak Kalb

**Sound Board Operator /
Recording Engineer**
Jason Eschhofen

Scenic Department Interns
Olivia "Via" Caspersen,
Jabria Chanel

Set & Properties Construction
James Boyd,
Olivia "Via" Caspersen,
Jabria Chanel, Michael Compton,
Jason Eschhofen,
David Horne, Maggie Jackson,
Mark Kimberling, Doug Laurie,
Geri Meltzer,
Jack Netzel-Yates,

Nicole Northington,
Chelsea Robinson

Costume Construction
Cathy Bascom, Connie Douglass,
Amie Eoff, Julia Horne,
Brigitte Hutchison,
Pam Johnson, Pam Key,
Krystiana Kosobucki,
Maggy Louderback,
Gracen Rawlinson,
Kathy Remsen, Lillia Scruggs,
Ashley Selberg

Lighting Crew
Kadarius Clemons, John Hudson,
Kennedy Jefferson, Mak Kalb,
Nina Mahintorabi, Kaylee Webb

Substitute Crew
James Boyd, Kacey Brewer,
Natalie Chamblin,
Sheena Edwards, Josalyn Hoyle,
Lauren Larson, Daniel Marshall,
Mac Reece

Auditions
David L. Allen, Lisa Chang,
Amy Mulroy, Jeffrey Posson,
Cathy Richardson

"Best Happy Hour in East Memphis"



Family Owned.
Family Run.



www.magnoliamay.com

Follow us:



718 Mt Moriah Rd • 901.676.8100 for reservations

SUPPORT THE ARTS WITH AN ARTS PLATE



tnspecialtyplates.org

TENNESSEE
SPECIALTY
LICENSE PLATES

9 wine & market *& spirits*

**We have some
of the finest
selections of wine
and spirits in the
MidSouth.**

**Conveniently located
close to Theatre Memphis.**

4734 Spottswood / 901.761.1662




VENICE
KITCHEN


Venice-Kitchen.com
368 Perkins Ext.
(901)767-6872

Proud Partners with Theatre Memphis



ANNOUNCING Season 53



Join our email newsletter & Social media to stay informed about NEW ticketing and donor packages and our exciting Concert & Event Series



Madeline Sayet's **ANTIGONE** *or And Still She Must Rise Up*

July 12th - 28th, 2024

All Youth Production Directed by Jamie Boller-Raup



Regional Premiere of **RIDE THE CYCLONE**

August 16th - September 1st, 2024

Directed by John Smiley & Music Director Tammy Holt



World Premiere of Michael Hoffman's **PATTERNS**

September 20th - 29th, 2024

Emerging Local Playwright Winner Directed by Domenic Andolina



Regional Premiere of **THE SMELL OF THE KILL**

October 18th - November 3rd, 2024

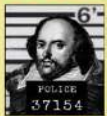
Dark Comedy Directed by Aliza Moran



ANNIE JR. All youth Holiday Musical

December 6th - 22nd, 2024

Directed by Christina Hernandez



Regional Premiere of **EQUIVOCATION**

January 24th - February 9th, 2025

Directed by Irene Crist



12 ANGRY JURORS

February 28th - March 16th, 2025

Directed by Marques Brown



Kander & Ebb's **CABARET**

May 9th - 25th, 2025

Directed by Jaclyn Suffel & Music Directed by Tammy Holt

Sensory Friendly & ASL Interpreted Matinees thru Full Spectrum Theatre Initiative!
Youth productions, classes & camps year round!

Thank you to all our sponsors especially:

City of Germantown, Arts Memphis, TN Arts Commission, & Donors

ENGAGE ENRICH EDUCATE ENTERTAIN

Germantown Community Theatre

901-453-7447

3037 Forest Hill Irene Rd.

gctcomeplay.org

Welcome to the Family



Retirement Living Where Everybody Knows Your Name

Technically, we're not all related, but it's amazing to be embraced by a group of people who accept you for who you are. Our staff and residents are warm, welcoming, fun, and genuinely care about each other. And we live life to the fullest every day. Add a huge assortment of stimulating activities, exciting amenities and delicious food, and you'll understand why we're not just another retirement community. You've probably heard the saying "It takes a village." Well, we are THE Village.



THE VILLAGE
— at Germantown —
A METHODIST HEALTHCARE AFFILIATE



village-germantown.com
Scan to learn more

To schedule a visit, call
901-557-3333

7820 Walking Horse Cir
Germantown, TN 38138

A Little Bit About The Play

GREASE is a musical with music, lyrics, and a book by Jim Jacobs and Warren Casey. Named after the 1950s United States working-class youth subculture known as greasers and set in 1959 at the fictional Rydell High School in Northwest Chicago (based on Taft High School in Chicago, Illinois, and named after rock singer Bobby Rydell), the musical follows ten working-class teenagers as they navigate the complexities of peer pressure, politics, personal core values, and love.

Since it was first performed on February 5, 1971, at Kingston Mines nightclub in Chicago, GREASE has been successful on both stage and screen, but the content has been diluted and its teenage characters have become less Chicago habitués (the characters' Polish-American backgrounds in particular are ignored with last names often changed, although two Italian-American characters are left identifiably ethnic) and more generic. The first Broadway production opened on June 7, 1972; when it closed in 1980, GREASE'S 3,388-performance run was the longest yet in Broadway history, although it was surpassed by A CHORUS LINE on September 29, 1983. It went on to become a West End hit, a successful feature film, two popular Broadway revivals in 1994 and 2007, and a staple of regional theatre, summer stock, community theatre, and high school and middle school drama groups. It remains Broadway's 17th longest-running show.

GREASE was adapted in 1978 as a feature film, which starred John Travolta (who himself had been in stage productions in a different role) and British-Australian singer and actress Olivia Newton-John, removed the musical's Chicago urban setting, and changed some plot elements, characters, and songs while adding new songs and elaborating on some plot elements only alluded to in the musical. Some of these revisions have been incorporated into revivals of the musical. A 2016 live TV musical used elements from both the original stage version and the film. A 1982 film sequel, GREASE 2, included only a few supporting characters from the film and musical and had no involvement from Jacobs or Casey.

Edited from Wikipedia



COME EXPERIENCE OUR
THREE COURSE
THEATRE MEMPHIS
PRIX FIXE MENU
AND GET OUT IN TIME
FOR THE SHOW

FOR RESERVATIONS & INFO:
WWW.RESTAURANTIRIS.COM

Always Entertaining

MUSICALS. COMEDIES. DRAMAS. NEW WORKS. CLASSICS.
CENTRALLY LOCATED. TEN SHOWS ON TWO STAGES. FREE PARKING.

JOIN US FOR OUR 2024–25 SEASON. BECOME A MEMBER AND SAVE!

GREASE

AUG 16 – SEPT 8, 2024

A MIDSUMMER NIGHT'S DREAM

SEPT 13 – 29, 2024

THE MOUSETRAP

OCT 11 – 27, 2024

PARALLEL LIVES

NOV 8 – 23, 2024

*A CHRISTMAS CAROL**

DEC 6 – 23, 2024

INHERIT THE WIND

JAN 17 – FEB 2, 2025

BEAUTY AND THE BEAST

FEB 28 – MARCH 30, 2025

SILENT SKY

APRIL 9 – 19, 2025

RUMORS

APR 25 – MAY 11, 2025

AIN'T MISBEHAVIN'

JUNE 6 – 29, 2025



PRODUCTION PHOTOS FROM OUR 2023–2024 SEASON.

PHOTO CREDITS: CARLA McDONALD

 **THEATRE MEMPHIS**

Memphis' choice *for* community



Founded in 1976, Trezevant Retirement Community is where residents can enjoy custom apartments and garden homes, varied lifestyle programming and classes and luxury services, amenities and dining. Trezevant is also a LifeCare community that offers access to a comprehensive continuum of care—all on a single campus.

Monthly Fees starting at \$2,650
Assisted Living monthly fees starting at \$5,800
LifeCare contracts starting at \$210,000



Trezevant

For your personal tour, call (901) 515.2800.

INDEPENDENT LIVING

| ASSISTED LIVING

| ALLEN MORGAN HEALTH & REHAB

2024-2025 Sponsors

Presenting Season Sponsor

First Horizon Foundation/ArtsFirst

Season Sponsors

ArtsMemphis
Tennessee Arts Commission

Production Sponsors and Center Stage Society

AutoZone through Arts Memphis	Jones Bros. Tree and Landscape,
Bert and Carol Barnett	a Davey Company
Dot and Stanley Bilsky	Juve Salon Spa
Belz Foundation through ArtsMemphis	Dorothy O. Kirsch
Dr. Jeff Brewer	Dr. Mel and Debbie Litch
Jim and Linda Brigance	Jerry and Elizabeth Marshall
Gene and Sandra Cochran	Menke Family Foundation
Creative Aging of the MidSouth	Marjorie Palazzolo
FedEx through ArtsMemphis	Dr. Thomas Ratliff
First Horizon Foundation/ArtsFirst through	John and Anne Robilio
ArtsMemphis	Edward Sharp
Dr. Tom Fortner	Todd & Co. Estate Sales, Todd Stricklin
Grizzlies Charitable Foundation	Deborah Dunklin Tipton and
Helm Endowment Fund of the Southwest	Mary Elisabeth Tipton
Community Foundation,	Winston Wolfe
Sallie and Marc Helm	World Cataract Foundation
International Paper	

The Gene and Sandra Cochran Legacy Society

Anonymous	Robert "Bob" Gilbert
David and Sarah Allen	Steve and Angela Good
Bert and Carol Barnett	Edwin Harris
Ann DeWar Blecken	Dr. Mel and Debbie Litch
Richard and Carole Briscoe	Dr. Michael and Shirley Lupfer
Jerry Chipman	David Lusk and Carissa Hussong
Gene and Sandra Cochran	Jerry and Elizabeth Marshall
Keith and Katie Cole	Fred and Pam Montesi
Dabney Coors	Seldon and Carolyn Murray
Donna Kay Fisher	Walter R. Smith
Bryan and Tracey Zerwig Ford	Asan G. Tejwani
Charles and Catherine Freeburg	

THEATRE MEMPHIS ARTISTIC STAFF

Becky Caspersen (Director of Outreach, Education, Volunteer Engagement & Stage Management), a native of St. Louis, was transplanted in Memphis circa 2012 and has never looked back. After 27 years as a free-lance lighting designer and stage manager and 5 years as Production Manager for Opera Memphis, she remains a 3-time complete failure at retirement. However, she found a soft landing here at TM in April 2022 and has loved her time at TM immensely. She is the wife of one amazing jazz bassist/music director (Carl), mother of three fierce (and artsy) women warriors (Gigi, Anneka, and Via), and the caretaker of as many Great Pyrenees as her house can handle. Becky is thankful to Theatre Memphis for providing her with a wonderful theatrical “work family” and a safe place to hide her chocolate.

Michael Compton (Production Manager / Technical Director) This is Mr. Compton’s 21st season as Production Manager for TM. He earned his BS in Technical Theatre from Illinois State University and was previously the Technical Director for the Players Theatre in Sarasota, FL. Ostrander Awards include lighting design for THOROUGHLY MODERN MILLIE, the Behind the Scenes Award for the 2006-2007 season, and the 2021 Janie McCrary Putting it Together Award.

Amie Eoff (Resident Costume Director) is celebrating her 10th year at TM. From 2012-2014, she served as the Costume Shop Supervisor at Rhodes College, and in 2012, she completed her fourth season as the Resident Costume Designer for Circuit Playhouse. During her career, Amie has been nominated for several Ostrander Awards for Best Costumes and has won for PRESENT LAUGHTER; BLOODY, BLOODY, ANDREW JACKSON; THE PRODUCERS; 1776; SHREK THE MUSICAL; SIDE SHOW; CATS; RAGTIME; MACBETH; and GUYS AND DOLLS. She holds an MFA in Costume Design from the University of Southern Mississippi. She has also worked on cruise ships with Jean Ann Ryan Productions and has designed for the Hangar Theatre in New York.

Jason Eschhofen (Resident Sound Designer) has a BA in Voice Performance and Studio Recording Technology from Bowling Green State University and an MM in Voice Performance from the University of Memphis. Some of his favorite credits include BEAUTIFUL: THE CAROLE KING MUSICAL (Theatre Memphis, music direction); THE 25TH ANNUAL PUTNAM COUNTY SPELLING BEE (Theatre Memphis, music direction); RUTHLESS! THE MUSICAL (Theatre Memphis, music direction); DAYS OF RAGE (Playhouse on the Square, sound design); and MURDER FOR TWO (Playhouse on the Square, Marcus Moscovicz, co-music direction, sound design/recording/engineering). Additionally, Jason has been the Music Director for the High School Musical Theatre Awards at the Orpheum since 2017 and the Music Director for the Ostrander Awards since 2019. He has won Ostrander Awards for Best Musical Direction (NINE, University of Memphis), Best Sound Design (URINETOWN THE MUSICAL, Theatre Memphis), and the Larry Riley Rising Star award.

Brigette Hutchison (Costume Shop Technician) is thrilled to be working at Theatre Memphis. She occasionally sews for TSC. She has designed costumes for A THOUGHT IN THREE PARTS, LATE MAY BE DARK, DEMOCRACY DIVINE, and SCAPIN. She was the Resident Lighting Designer for Yellow Tape Construction Company and Ready Set Go! Dance in Austin, Texas. She has worked SXSW, ADF, as well as countless conventions, weddings, and parties. She has lighting designed for former presidents, Jane Goodall, and Prince. She owns a coffee and cookie company with her partner, Naiman, but she is most proud to be a mother to her son, Julien.

Maggie Jackson (Assistant Technical Director) is excited to be joining Theatre Memphis for its 104th season. After the honor of being Stage Manager for RAGTIME, she is thrilled to continue her work with this wonderful community as the Assistant Technical Director. She would like to thank the TM staff, directors, and the cast and crew for the opportunity to be a part of such amazing productions and seasons. Lastly, she would like to thank her family and friends for all their love and support.

Jack Netzel-Yates (Resident Scenic Designer / Properties Master) received his BFA in Theatrical Design and Production from Oklahoma City University in 2010. Now entering his 12th season with TM, he has previously worked for venues such as The Kalamazoo Civic Theatre, Light Opera Oklahoma, Oklahoma Shakespeare in the Park, City Rep., Ballet Memphis, and Tennessee Shakespeare Company. Jack has designed over 67 productions for TM, received 67 Ostrander Award nominations, and won Best Scenic Design for his work on THE HEIRSES (2014), THE PRODUCERS (2015), BEAUTY AND THE BEAST (2016), HAIRSPRAY (2018), CATS (2019), THE SECRET GARDEN (2021), URINETOWN THE MUSICAL (2021), THE PLAY THAT GOES WRONG (202), and MARY POPPINS (2023). Recently, Jack received the American Association of Community Theatre Award for Scenic Design of the Decade for THE DROWSY CHAPERONE (2018). He would like to thank his friends and family for all of their continued love and support, especially his husband, Terry.

Nicole Northington (Resident Lighting Designer) is excited to join Theatre Memphis for her third season as the Resident Lighting Designer. She began participating in technical theatre as a freshman in high school and went on to receive her BA in Dramatic Arts in 2019 from Trevecca Nazarene University in Nashville, Tennessee. During her time in Nashville, she worked with many organizations including Nashville Children’s Theatre, TPAC, Nashville Opera, and more. After graduating, she moved to Memphis in August 2019 to complete three seasons at the Circuit Playhouse. Some of her favorite designs include TORCH SONG, SILENT SKY, SISTER ACT, THE CRUCIBLE, and BEAUTIFUL: THE CAROLE KING MUSICAL. This and every show she does is dedicated to her late father, LJ Northington. For every day he drove her to play rehearsal to every show he saw, his support is what got her here today.

Chelsea Robinson (Stage Management & Programs: Tech Academy, Volunteers & Daytime A CHRISTMAS CAROL) has been part of the Theatre Memphis family since 2008 where she has been stage managing, working backstage, volunteering, and performing for many years and was a member of the ShoWagon acting troupe during the 2012-2013 season. She received her BFA in Design and Technical Production from The University of Memphis and

THEATRE MEMPHIS ARTISTIC STAFF

received the Larry Riley Rising Star Award at the 2015 Ostrander Theatre Awards in Memphis. Chelsea is so excited to work with the incredible staff at Theatre Memphis and all of the amazing casts, crews, stage managers, and volunteers for the upcoming seasons.

Karon Samuels (Education & Programs: Read to Relate & Women in the Arts) currently serves as Program Coordinator for The Cooler, Outreach Coordinator for Memphis Black Arts Alliance, and Education and Outreach Associate with Theatre Memphis. She also serves as a Read2Lead Theatre Instructor with Memphis Dream Center, a local non-profit that seeks to empower Memphis youth by encouraging a love of reading. A proud graduate of Howard University's Fine Arts program, Karon has spent much of her career elevating and celebrating black storytelling and marginalized voices, working with local art nonprofits that support her personal mission of art accessibility and equity. She is also an artist in her own right, gracing stages in musicals, plays, spoken word sets, and operas in Memphis and the DMV area. Karon is proud to play her part in creating a unique and sustainable creative ecosystem in Memphis. She hopes to see the creatives in our city leave a lasting, socially impactful influence in modern media, both onstage and behind the scenes.

Ashley Selberg (Costume Shop Manager) was born and raised outside of Memphis, TN. She attended O'More College of Design and received a BFA in Fashion Design. While in college, she interned at Nashville Repertory Theatre and fell in love with costuming. After graduating, she became a costume technician for Ballet Memphis under head designer Bruce Bui. Since then, she has worked for other theatres and film production companies on shows like BLUFF CITY LAW and WOMEN OF THE MOVEMENT. In 2022, she won the Ostrander Award for Best Costumes and Best Wig and Makeup for THE SECRET GARDEN at Theatre Memphis. She also competes in Cosplay, winning Best in Show at MTAC 2018 and Best Group at MTAC 2022. "Costuming is my passion; there is just something magical about helping an actor, dancer, or everyday person feel special by creating the perfect costume that brings everything together."

Abi Wiggins (Outreach & Programs: TM Prep, SkillSet & Festivals) Having always been dramatic, Abi surprised no one when she chose to study theatre, first at Northwest Community College and then Mississippi University for Women. She worked summers at Carey Dinner Theatre, was a carpentry intern at Playhouse on the Square, and recently produced a feature film. Some of her favorite credits include backstage crew for PRISCILLA: QUEEN OF THE DESERT (Playhouse on the Square), Juliet in ROMEO AND JULIET (NWCC), Assistant Director for WAKERS: AN AUDIO DRAMA (Bedrock Productions), and Executive Producer for TWENTIES (Clandestine Pictures).

THEATRE MEMPHIS EXECUTIVE COMMITTEE

PRESIDENT	Joe Lackie	PAST PRESIDENT ADVISOR	Dabney Coors
VICE-PRESIDENT/SECRETARY.....	Janice Hall	PAST PRESIDENT ADVISOR	Jerry Marshall
VICE-PRESIDENT	Jared Thomas Johnson	PAST PRESIDENT ADVISOR	Sarah Norton
TREASURER	Bryan W. Ford	PAST PRESIDENT ADVISOR	Seldon Murray
BUSINESS ADVISOR	Gene B. Cochran	EXECUTIVE COMMITTEE EMERITUS....	Kitty Cannon
IMMEDIATE PAST PRESIDENT	Jim Brigrance		

BOARD OF DIRECTORS

Toney Armstrong	Karun Gadiparthi	Meghan Lewis	Robert Rios
Dr. Anita Arnold	Betha Gill	Mark Luttrell	Mark Ruleman
Sally Baker	Pamela Hauber	Lynn McDonald	Jaclyn Suffel
Rick Bardl	Dr. Shawn Hayden	Kim Mullins	Deborah Dunklin Tipton
Veronica Batterson	Karen Johnston	Richard Myers	Rev. Dr. Niambi Webster
Pat Beech	Jude Knight	Dr. Keith Norman	Josh Whitehead
Jared Braddy-Haney	Janette Krauch	Elizabeth Perkins	
Katie Cole	Susan Labovitz	Jim Renfrow	

ACTIVE PAST PRESIDENTS

Bert Barnett	Dabney Coors	Seldon Murray
Jim Brigrance	James A. Frommel	Sarah Norton
Dan Conaway	Randall Hartzog	Scott Pioreck
Gene B. Cochran	Jerry Marshall	

THEATRE MEMPHIS FRONT OF HOUSE STAFF

House Managers

Claudia Bacigalupo, Natalie Chamblin,
Daniel Myers-Ray, Abi Wiggins

Bartenders

Tamika Burris, Natalie Chamblin,
Jacqueline Cooper, Jennifer Gresham,
Marc Holder, Daniel Myers-Ray,
Nicole Northington, Julianne Schmidt,
Jennifer Steinmetz, Abi Wiggins, Atam Woodruff

Security

Claudia Bacigalupo, Daniel Myers-Ray,
Chelsea Robinson, Toby Watson, Abi Wiggins

Ushers

Clinton Alexander, Latonya Alexander,
Sarah Allen, Anita Angelacci, Martha Angelo,
Jenny Baker, Sue Binnie, Marlinda Bolton,
Sandy Bolton, Caryn Brannen, Jenna Burch,
Shirley Burl, Patty Butter, Patty Carreras,
Lee Clarke, Frances Coard, Judy Coburn,
Jacqueline Collins, Isabella Coons,
William Cunningham, Lisa Curry, Jane Curtis,
Helen Davis, Russell Day, Sharon Day,
Sofia Delahoussaye, Molly Elkins, Jeanne Ellett,
Alicia Farage, Don Farage, Linda Forbess,

Brad Gabriel, Linda Gabriel, Jessica Greer,
Josslyn Greer, Heather Griffin, Koih Griffin,
Mary Kirksey Griffin, Daniel Harris, Kimberly
Haynes, Maryann Hendricks, Robert Henegar,
Dawnell Hindelang, Sherry Hinton,
Tamecca Hobbs, Ronald Hobbs, Jr.,
Tenitia Hobson, Alan Hopkins, Missy Hopkins,
Josalyn Hoyle, Donna Hulbert,
Hiawaratha Jackson, Stacy Jeffries,
Henrietta Jones, Jerry Jones, Rhylea Jones,
Ariana Joya, Jennifer Joya, Alisa Karney,
Neha Kodali, Olivia Le, Linder Lemmons,
Kathy Lewis, Claire Little, NaCoria Love,
Kathy Lovett, Ann Lowery, Will Lowery,
Lisa Matlock, Christi McCafferty, Teresa McCall,
Jean McElrath, Lisa McFarland, Mandy McKay,
Tracey Mckinzie, Alvin Miller, Lynette Miller,
Velma Nelson, Jimmy Nguyen, David O'Neill,
Alisa Oriaku, Barbara Rea, Amy Rush,
Kira Sadowsky, Adam Sanders, Martha Sanders,
Kaylyn Saulsberry, Brandon Sewell,
Marlena Shorter, Shelly Shorter, Nicole Smith,
Sabrina Stokes, Shirley Toler, Kathy Tosh,
Bich Vo, Linda Weiss, Caren Whitaker,
Gordon Whitaker, Ann Wieties, Arthur Wistock,
Julie Wistock, Alice Zalon

PAULSEN
PRINTING COMPANY



BRINGING COLOR TO LIFE
901-363-5988

TOPS BAR-B-Q

MEMPHIS
Since 1952 **BEST**

Famous Smoked Ribs

Cheeseburgers

Pork Shoulder

Beef Brisket

Fire-Braised Chicken

And We Cater Too

901.667.8677

COMPUTER HARDWARE SERVICES

Technology
Assistance
Since 1991

We make Technology
Accessible!

Serving Theatre Memphis for
over 27 Years.

(662) 404-6177

SWEET NOTES

from Memphis

OVER 122 SWEET YEARS



Dinstuhl's

Fine Candles Since 1902

Memphis, TN | 800.355.0358 | dinstuhls.com

Laurelwood · Germantown · Collierville · Downtown · Pleasant View

Season Presenting Sponsor for the 2024-25 Season



ArtsFIRST

Art lifts our spirits and expands our horizons. Because art plays a vital role in a healthy community, expressing the diversity within our common humanity, the First Horizon Foundation is a long-time supporter. As one of our signature investments, ArtsFirst is a program to promote excellence and enrichment in the arts in Memphis. This new approach allows us to partner with ArtsMemphis in the grant-making area while ensuring a continued significant impact in the community.

THANK YOU FIRST HORIZON FOUNDATION/ARTSFIRST FOR TRUSTING THEATRE MEMPHIS AND RECOGNIZING THE IMPORTANT ROLE THEATRE MEMPHIS PLAYS IN THE COMMUNITY

Theatre Memphis Applauds Our Contributing Members

Theatre Memphis gratefully acknowledges the generosity of the individuals, corporations, and foundations that have invested in our theatre. You are the reason we have enjoyed a rich 103-year history as one of the most acclaimed community theatres in the nation, and we are most grateful for you.

Ticket sales do not cover the full costs of our productions and programs. Your contributions through Production Sponsorships, Center Stage Society, Line Producers, and Contributing Subscribers make it possible to present productions of the highest quality. Annual contributions and support will ensure our future.

Please accept our sincerest appreciation for your outstanding support. If we have made an error or if we have not listed your name or company as you wish it to appear, please call Kaitlin at 901-682-8601.

Life Members

Gene & Sandra Cochran
Janie McCrary

Producers

Dr. Anita Arnold
Bert & Carol Barnett
Brett & Veronica Batterson
Gary Beard & Joe Lackie
Pat & Charles Beech
Jim & Linda Brigance
Gay Daughdrill Boyd
Kitty Cannon & Jim Waller
Katie & Keith Cole
Foy Coolidge
Bryan & Tracey Ford
Kim & Mabry Ford
Dr. Tom Fortner
Martha & Jerrold Graber
John & Janice Hall
Pamela Hauber
Shawn Hayden & Connor Parris
James R. Humphreys
Jude Knight
Barbara Lapides
Louise Levin
Dr. Mel & Debbie Litch
Ron Martin & Curtis Jones
Missy McClendon
Lynn McDonald
Mike's Autoplex
Rona Mogil & Douglas Green
Seldon & Carolyn Murray
Richard Myers & Priya
Tummalapalli
Scott & Sherry Pioreck
Barbara & Allie Prescott
Beth & Gary Simpson
Shannon Sparks
Asan G. Tejwani
Melissa Walker & Kinon
Keplinger
Josh Whitehead
Camilla Wilson

Stars

David L. Allen
Dr. Phillip & Mrs. Carol Aronoff
Dot & Stanley Bilsky
Jen Champion, Erin Robbins,
Jessica Willis, Beth Thorne,
Laurie Poteat, Elizabeth Kreis &
Denise Beyer
Jeff & Anne Coole
Dr. & Mrs. David Deneka
Michael & Tricia DeShazo
Linda Erickson & Jim Birdsong
Barry & Lihan Frager
David Freeman
Howard Glatstein
Kam Hjermsstadt
David Holt
Anita Howald
Jerry Huff
Diana Jones
Sandra Jones
Shauna & William Key
Susan Labovitz
Scott & Carol Mednikow
Brett & Margaret Millikin
Seldon & Carolyn Murray
Cynthia Nash & Angela Cabrera
Anthony Parks
Jim & Betsy Pentecost
Jeff & Robin Pohlman
Missy Reeder
Karen Riley & Jenny Lionberger
Robert Rios & Landry Duvall
Margaret Roch
Gus & Cathy Schroeder
Edward Sharp
Pat & Kim Siano
Charles & Mary Stewart

Leading Players

Karen Arnold
Alvin D. Benson
Kevin & Dana Bernstein
Clifford & Olive Bird

Jay & Kelly Bobo
Mary M. Bowen
Terry Brown
James Campbell
Teresa & Dennis Champion
Carroll Clark
Valerie & Vanya Clements
Missy Clifton
Jim & Pat Corbitt
Charles Davidson
Sarah Dawson
Mark & Susi Edwards
Corey Eymard
Susan Ferkin
Krista Francavilla
Ray & Betha Gill
Tymikia Glenn
Carol Greenwald
Henry Greinke
John & Judy Griesbeck
Mary Beth Gunter
David & Pamela Hallin
Stanley Harp
Alvin Harris
Diane Harvey
Sara S. Heckle
Kevin Hinton
Grace E. & Frank B. Howell
Joyce Howell
Thomas & Elisa Jerdon
William & Barbara Johns
The Robert Jones Family
Trina L. Jones
Andrew Jordan
Donald & Debbie Kermick
Kennison Kyle
Wis Laughlin & Cyndee Gratz
Dr. Edward & Vicki Lazarus
Darlene Loprete
Majestic Wine & Liquor
Joy Maness
Tony & Kathy Marsh
Steven & Mary Jane Matthies
The Mayne Family

Jeff & Andrea McLeod
Irma W. Merrill
Andrew J. Morgret
Jim & Nancy Mulroy
Nayla & George Nassar
Amy & Steve Newsom
Kerri Pleban
Cynthia Powers
Sheppie T. Quinn
Todd & Julie Rooks
Mark Rosas
Randa Rosenblum
Cynthia & Marco Ross
Dr. C. Allan Ruleman Jr.
Gena Salvaggio
Philip Schaeffen
Cindy Scott
William & Courtney Segal
Rebecca Sharpe
Robert & Vickie Shaw
Ron & Linda Sklar
Susan Sprayberry
John Steger
Tammy Sullivan
Asan G. Tejwani
Jennifer Vescovo
Ellen I. Watson
Ben Westerman

Susan Whitehead
& Margaret Smith
David & Catherine Willmott
Amy & Don Wilson
Phillip & Melinda Winchester

Supporting Players

Kevin & Shelley Bennett
Jennifer Besing
Tim & Gail Bishop
Breen Bland & Jeanie Mercer
Keith Brewer
Polly C. Brower
Bob & Beverly Buchalter
Caroline & Greg Carrico
Cathy Chapman
Nora & Dan Conaway
Luci Cromer
Sara & Jeremy Dollar
JJ & Dick Doughtie
Marilyn & Mike Ellicott
Gammill Family
Carol Geller
Gayle Gower
Pamela Guasco
Martin Hand
Alisa Harber
Jerry Heimlicher

Amy Hess
Steve & Charlotte Icardi
Katherine Johnson
Susan & Doug Johnson
Ronni Kirsch
Dennis & Ruth Kopcjal
Curt La Fontaine
Gail Lewis
May Lynn Mansbach
Rose McCallum
Cheryl McCormack
Susan Mutin
Linda & Ellis Neufeld
Victor Nordlund
Ann L. Powell
Amanda Prislowsky
Heather Ray
Robert Reed
Dr. Robert & Linda Serino
Mel & Donna Skees
Betsy Tedder
Wayne Tiner
Tine Williams

CHECK ENGINE
LIGHT ON?
CHECK IT FOR FREE

The Free
Fix  Finder Service
with Shop Referral

Exclusively at

AutoZone



A woman with glasses is shown in profile, playing a piano. She is wearing a black top with a gold beaded necklace and a red watch. The background is dark, and the piano keys are visible on the right side of the frame.

WE HELP MAKE ART MORE

dramatic

We don't make the art, but with your contributions, we make the art possible. This year, we were proud to have granted \$3M to 85 organizations and individual artists through strategic partnerships and new avenues that support people, programs, and operations.

ARTSmemphis[®]

Working behind the scenes to grow
the foundation of Memphis' arts.

ARTSMEMPHIS.ORG • 901.578.ARTS

Check Out
Our 2024-25
Season.



Become a
Member and
Save.



You will never again have to
pay full price for groceries.



Just 1/2 block East of Theatre Memphis

[LIBRO]
AT LAURELWOOD



387 Perkins Extended
LibroLaurelwood.com
901.800.2656



BILTMORE®

by Raymond Mazza



Exclusively in Memphis at

RB
SINCE 1965
RUSSELL BROTHERS
FINE JEWELERS



4646 Poplar Avenue, Suite 109, Memphis, TN 38117 • 901.682.5471

2024-2025

BROADWAY SEASON

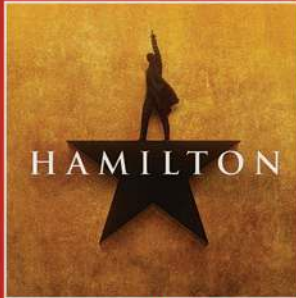
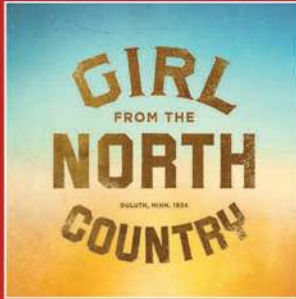
SPONSORED BY

HYATT
CENTRIC®
BEALE STREET
MEMPHIS

Memphis Area
Honda Dealers

HONDA

Pinnacle
FINANCIAL PARTNERS



SEASON TICKETS ARE **ON SALE NOW!**

LEARN MORE AT ORPHEUM-MEMPHIS.COM/SEASON



ORPHEUM
theatre group

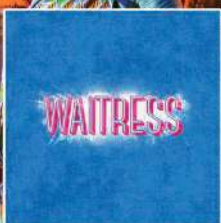


24/25

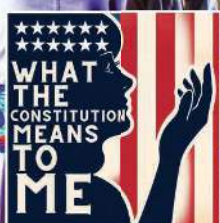
Season Subscriptions
On Sale Now!



JULY. 12 - 28



AUG. 16 - SEP. 15



SEP. 13 - OCT. 6



NOV. 8 - DEC. 22



NOV. 15 - DEC. 22



NOV. 22 - DEC. 22

Join our family of Season Subscribers and unlock savings of 25%

Subscribe for Savings!

- **Unlock Savings:** Opt for a subscription today and unlock savings of up to \$20 on single ticket prices, available only until September 1st, 2024.
- Drink discounts for Patron & Benefactor
- Discounts on Theatre Education Programs
- Season Subscribers Member Card offering discounts at local favorites like Dinstuhl's Fine Candies, The Botanic Gardens, 17Berkshire, and Backbeat Tours.
- **Flexibility:** We understand flexibility is key; use your subscription in any combination throughout the season. Season ticket holders can exchange tickets without additional costs, provided they are exchanged or released at least 24 hours before the performance.
- **Early Bird Savings:** Although we offer deals year-round, the sooner you become a member, the more you'll save.

Our top-tier ticket price caps at \$25



EMBASSY APARTMENTS

Luxury and Location



Offering one, two, and three bedrooms

For more information
901.685.8020

Utilities Included
See our floorplans @
embassyaptsmemphis.com

505 South Perkins Rd.
In the Heart of East
Memphis

www.embassyaptsmemphis.com



The Education for a Lifetime



**What is the Purpose of Education?
Admission to college? High test scores?
Or something greater?**

At Westminster Academy, we equip students to pursue God's truth, goodness, and beauty in the world around them - all while preparing them for any path they choose upon graduation.

We invite you to reconsider the purpose of education, and discover the beauty of a classical Christian education!

Schedule a tour to see the classical difference!



25 years



i couldn't have done it without you.

In 1998, we started Independent Bank with a simple goal—to serve our customers heroically. We always knew at the end of the day, this business was not about us, it was all about you.

As we celebrate 25 years of serving you heroically, we are proud to be the largest Memphis-headquartered community bank. You have been our priority as we grew, your goals have been our goals, and you are the reason for our success.

So, here's to you! Thank you for giving us the opportunity to be part of your business and personal dreams. Thank you for trusting us with your financial needs, and giving us the opportunity to grow alongside you.

We truly couldn't have done it without you!

Your friends at **i-bank**

i-bankonline.com

Member
FDIC

i independent bank™